

Product datasheet for TA324344S

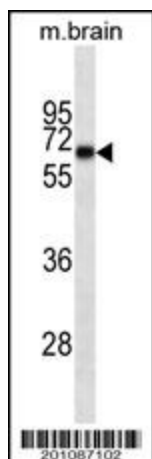
alpha Internexin (INA) Mouse Monoclonal Antibody [Clone ID: 257CT7.1.2]

Product data:

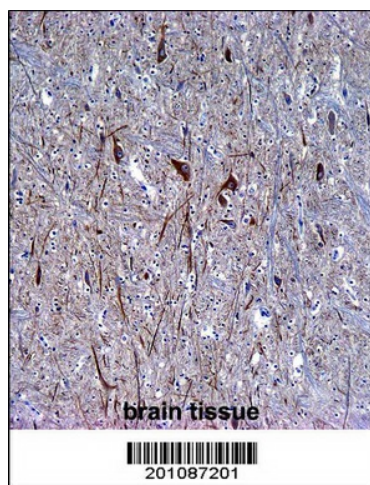
Product Type:	Primary Antibodies
Clone Name:	257CT7.1.2
Applications:	IF, IHC, WB
Recommended Dilution:	WB: 1:100~250, IF: 1:10~50, IHC: 1:10~50
Reactivity:	Mouse (Predicted: Rat, Bovine)
Host:	Mouse
Isotype:	IgG1, kappa
Clonality:	Monoclonal
Immunogen:	This INA antibody is generated from mice immunized with a KLH conjugated synthetic peptide between 290-319 amino acids from human INA.
Formulation:	Purified monoclonal antibody supplied in PBS with 0.09% (W/V) sodium azide.
Concentration:	lot specific
Purification:	This antibody is purified through a protein G column, followed by dialysis against PBS.
Conjugation:	Unconjugated
Storage:	Store at -20°C as received.
Stability:	Stable for 12 months from date of receipt.
Predicted Protein Size:	55391 Da
Gene Name:	internexin neuronal intermediate filament protein alpha
Database Link:	NP_116116 Entrez Gene 24503 Rat Entrez Gene 226180 Mouse Q16352
Synonyms:	NEF5; NF-66; TXBP-1


[View online »](#)

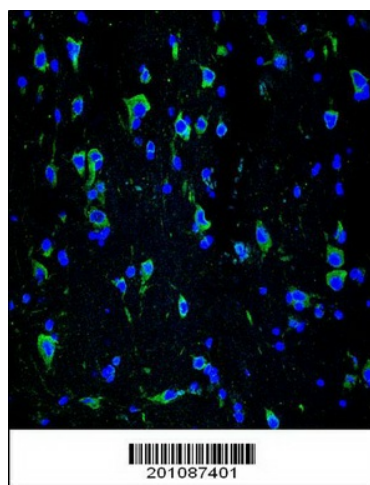
Product images:



INA Antibody (Cat. # [TA324344]) western blot analysis in mouse brain tissue lysates (35ug/lane). This demonstrates the INA antibody detected the INA protein (arrow).



INA Antibody (Cat. # [TA324344]) immunohistochemistry analysis in formalin fixed and paraffin embedded human brain tissue followed by peroxidase conjugation of the secondary antibody and DAB staining. This data demonstrates the use of INA Antibody for immunohistochemistry. Clinical relevance has not been evaluated.



Confocal immunofluorescent analysis of INA Antibody (Cat#[TA324344]) with brain tissue followed by Alexa Fluor 488-conjugated goat anti-mouse IgG (green). DAPI was used to stain the cell nuclear (blue).