

Product datasheet for **TA324343**

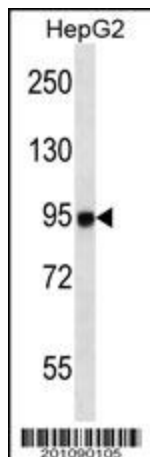
MASTL Mouse Monoclonal Antibody [Clone ID: 235CT7.8.2.3]

Product data:

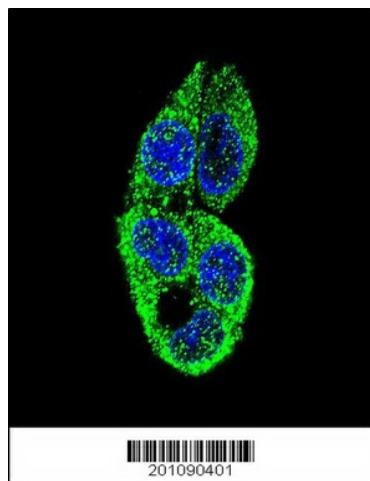
Product Type:	Primary Antibodies
Clone Name:	235CT7.8.2.3
Applications:	IF, WB
Recommended Dilution:	WB: 1:100~500, IF: 1:10~50
Reactivity:	Human
Host:	Mouse
Isotype:	IgG1, kappa
Clonality:	Monoclonal
Immunogen:	This MASTL monoclonal antibody is generated from mouse immunized with MASTL recombinant protein.
Formulation:	Purified monoclonal antibody supplied in PBS with 0.09% (W/V) sodium azide.
Concentration:	lot specific
Purification:	This antibody is purified through a protein G column, followed by dialysis against PBS.
Conjugation:	Unconjugated
Storage:	Store at -20°C as received.
Stability:	Stable for 12 months from date of receipt.
Predicted Protein Size:	97319 Da
Gene Name:	microtubule associated serine/threonine kinase like
Database Link:	NP_116233 Entrez Gene 84930 Human Q96GX5
Synonyms:	GREATWALL; GW; GWL; MAST-L; THC2
Protein Families:	Druggable Genome, Protein Kinase



[View online »](#)

Product images:

MASTL (Cat. #TA324343) western blot analysis in HepG2 cell line lysates (35ug/lane). This demonstrates the MASTL antibody detected the MASTL protein (arrow).



Confocal immunofluorescent analysis of MASTL Antibody (Cat#TA324343) with HepG2 cell followed by Alexa Fluor 488-conjugated goat anti-mouse IgG (green). DAPI was used to stain the cell nuclear (blue).