

## Product datasheet for **TA324342S**

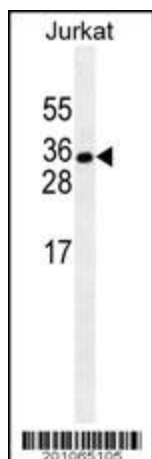
### ELAVL1 Mouse Monoclonal Antibody [Clone ID: 224CT6.5.3]

#### Product data:

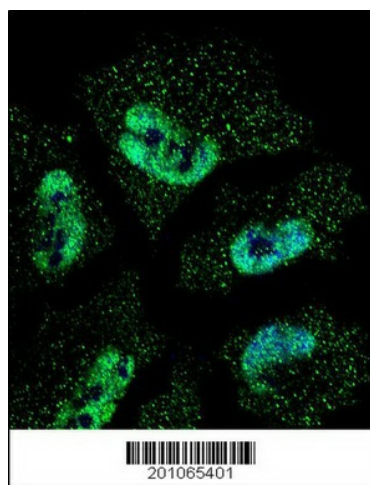
Product Type:	Primary Antibodies
Clone Name:	224CT6.5.3
Applications:	IF, WB
Recommended Dilution:	WB: 1:100~1000, IF: 1:10~50
Reactivity:	Human
Host:	Mouse
Isotype:	IgG1, kappa
Clonality:	Monoclonal
Immunogen:	This ELAVL1 monoclonal antibody is generated from mouse immunized with ELAVL1 recombinant protein.
Formulation:	Purified monoclonal antibody supplied in PBS with 0.09% (W/V) sodium azide.
Concentration:	lot specific
Purification:	This antibody is purified through a protein G column, followed by dialysis against PBS.
Conjugation:	Unconjugated
Storage:	Store at -20°C as received.
Stability:	Stable for 12 months from date of receipt.
Predicted Protein Size:	36092 Da
Gene Name:	ELAV like RNA binding protein 1
Database Link:	<a href="#">NP_001410</a> <a href="#">Entrez Gene 1994 Human</a> <a href="#">Q15717</a>
Synonyms:	ELAV1; Hua; HUR; MeIG

[View online »](#)

## Product images:



ELAVL1/MB10217 antibody (Cat. #TA324342]) western blot analysis in Jurkat cell line lysates (35ug/lane). This demonstrates the ELAVL1/MB10217 antibody detected the ELAVL1/MB10217 protein (arrow).



Confocal immunofluorescent analysis of ELAVL1 Antibody (Cat#[TA324342]) with NCI-H460 cell followed by Alexa Fluor 488-conjugated goat anti-mouse IgG (green). DAPI was used to stain the cell nuclear (blue).