

Product datasheet for **TA324341S**

ATG4D Mouse Monoclonal Antibody [Clone ID: 222CT15.4.1]

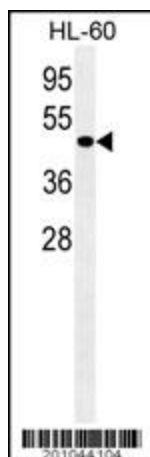
Product data:

Product Type:	Primary Antibodies
Clone Name:	222CT15.4.1
Applications:	IF, WB
Recommended Dilution:	IF: 1:25, WB: 1:100~1000
Reactivity:	Human
Host:	Mouse
Isotype:	IgG1, kappa
Clonality:	Monoclonal
Immunogen:	This ATG4D monoclonal antibody is generated from mouse immunized with ATG4D recombinant protein.
Formulation:	Purified monoclonal antibody supplied in PBS with 0.09% (W/V) sodium azide.
Concentration:	lot specific
Purification:	This antibody is purified through a protein G column, followed by dialysis against PBS.
Conjugation:	Unconjugated
Storage:	Store at -20°C as received.
Stability:	Stable for 12 months from date of receipt.
Predicted Protein Size:	52922 Da
Gene Name:	autophagy related 4D cysteine peptidase
Database Link:	NP_116274 Entrez Gene 84971 Human Q86TLO
Synonyms:	APG4-D; APG4D; AUTL4
Protein Pathways:	Regulation of autophagy

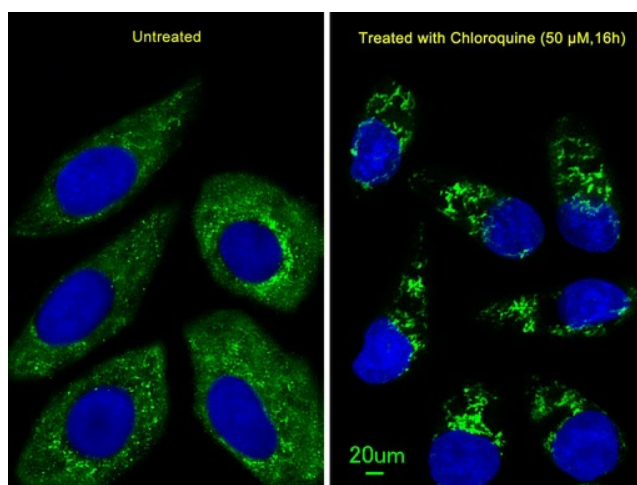


[View online »](#)

Product images:



ATG4D/MB10250 antibody (Cat. #TA324341) western blot analysis in HL-60 cell line lysates (35ug/lane). This demonstrates the ATG4D/MB10250 antibody detected the ATG4D/MB10250 protein (arrow).



Immunofluorescent analysis of U251 cells, using ATG4D Antibody (Cat. #TA324341). U251 cells (right) were treated with Chloroquine (50 μ M, 16h). [TA324341] was diluted at 1:25 dilution. Dylight Fluor 488-conjugated goat anti-mouse IgG at 1:400 dilution was used as the secondary antibody (green). DAPI was used to stain the cell nuclear (blue).