

## Product datasheet for **TA324340S**

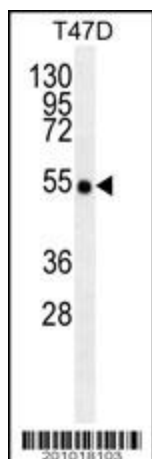
### TRAF2 Mouse Monoclonal Antibody [Clone ID: 214CT16.3.4]

#### Product data:

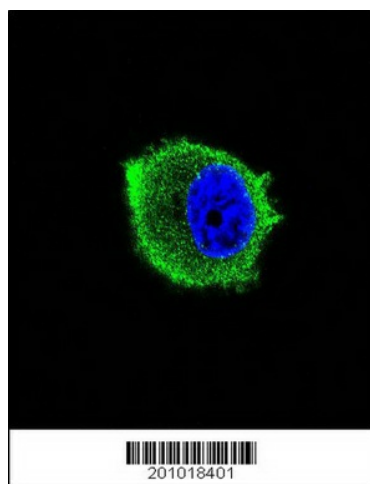
Product Type:	Primary Antibodies
Clone Name:	214CT16.3.4
Applications:	IF, WB
Recommended Dilution:	IF: 1:10~50, WB: 1:100~1000
Reactivity:	Human
Host:	Mouse
Isotype:	IgG1, kappa
Clonality:	Monoclonal
Immunogen:	This TRAF2 monoclonal antibody is generated from mouse immunized with TRAF2 recombinant protein.
Formulation:	Purified monoclonal antibody supplied in PBS with 0.09% (W/V) sodium azide.
Concentration:	lot specific
Purification:	This antibody is purified through a protein G column, followed by dialysis against PBS.
Conjugation:	Unconjugated
Storage:	Store at -20°C as received.
Stability:	Stable for 12 months from date of receipt.
Predicted Protein Size:	55859 Da
Gene Name:	TNF receptor associated factor 2
Database Link:	<a href="#">NP_066961</a> <a href="#">Entrez Gene 7186 Human</a> <a href="#">Q12933</a>
Synonyms:	MGC:45012; TRAP; TRAP3
Protein Families:	Druggable Genome
Protein Pathways:	Adipocytokine signaling pathway, Apoptosis, MAPK signaling pathway, Pathways in cancer, RIG-I-like receptor signaling pathway, Small cell lung cancer

[View online »](#)

## Product images:



TRAF2/MB10188 antibody (Cat. #TA324340)) western blot analysis in T47D cell line lysates (35ug/lane). This demonstrates the TRAF2/MB10188 antibody detected the TRAF2/MB10188 protein (arrow).



Confocal immunofluorescent analysis of TRAF2 Antibody (Cat#[TA324340]) with MCF-7 cell followed by Alexa Fluor 488-conjugated goat anti-mouse IgG (green). DAPI was used to stain the cell nuclear (blue).