

Product datasheet for **TA324337S**

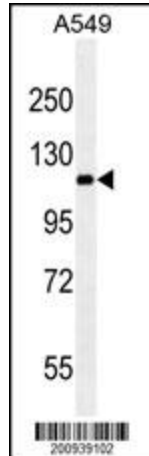
RET Mouse Monoclonal Antibody [Clone ID: 188CT11.2.3]

Product data:

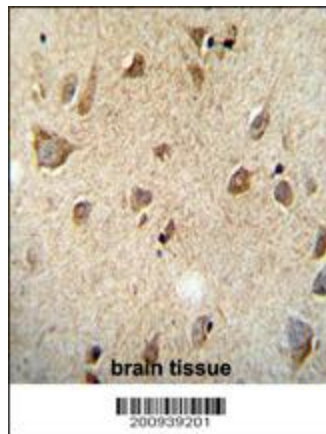
Product Type:	Primary Antibodies
Clone Name:	188CT11.2.3
Applications:	IF, IHC, WB
Recommended Dilution:	WB: 1:500~16000, IHC: 1:50~100, IF: 1:10~50
Reactivity:	Human
Host:	Mouse
Isotype:	IgM, kappa
Clonality:	Monoclonal
Immunogen:	This RET Monoclonal antibody was raised using purified His-tagged recombinant human RET.
Formulation:	Mouse monoclonal antibody supplied in crude ascites with 0.09% (W/V) sodium azide.
Concentration:	lot specific
Conjugation:	Unconjugated
Storage:	Store at -20°C as received.
Stability:	Stable for 12 months from date of receipt.
Predicted Protein Size:	124319 Da
Gene Name:	ret proto-oncogene
Database Link:	NP_065681 Entrez Gene 5979 Human P07949
Synonyms:	CDHF12; CDHR16; HSCR1; MEN2A; MEN2B; MTC1; PTC; RET-ELE1; RET51
Protein Families:	Druggable Genome, Protein Kinase, Transmembrane
Protein Pathways:	Endocytosis, Pathways in cancer, Thyroid cancer



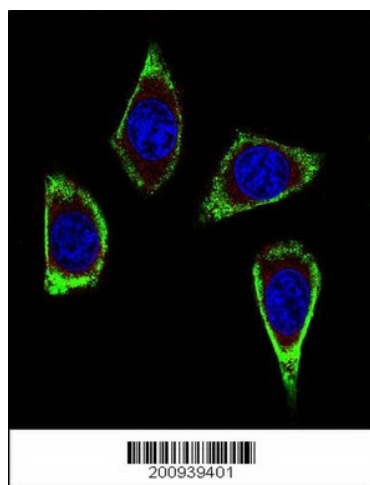
[View online »](#)

Product images:

RET (Cat. #[TA324337]) western blot analysis in A549 cell line lysates (35ug/lane). This demonstrates the RET antibody detected the RET protein (arrow).



RET Monoclonal (Ascites) (Cat. #[TA324337]) immunohistochemistry analysis in formalin fixed and paraffin embedded human brain tissue followed by peroxidase conjugation of the secondary antibody and DAB staining. This data demonstrates the use of the RET Monoclonal (Ascites) for immunohistochemistry. Clinical relevance has not been evaluated.



Confocal immunofluorescent analysis of RET Antibody (Ascites) (Cat#[TA324337]) with MDA-MB231 cell followed by Alexa Fluor 488-conjugated goat anti-mouse IgG (green). Actin filaments have been labeled with Alexa Fluor 555 phalloidin (red). DAPI was used to stain the cell nuclear (blue).