

## Product datasheet for **TA324336S**

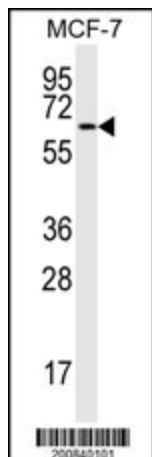
### MAP2 Mouse Monoclonal Antibody [Clone ID: 159CT34.12.3.4]

#### Product data:

Product Type:	Primary Antibodies
Clone Name:	159CT34.12.3.4
Applications:	IF, IHC, WB
Recommended Dilution:	WB: 1:1000, IF: 1:10~50, IHC: 1:10~50
Reactivity:	Human
Host:	Mouse
Isotype:	IgG1, kappa
Clonality:	Monoclonal
Immunogen:	This MAP2 Monoclonal antibody was raised using purified His-tagged recombinant human MAP2.
Formulation:	Mouse monoclonal antibody supplied in crude ascites with 0.09% (W/V) sodium azide.
Concentration:	lot specific
Conjugation:	Unconjugated
Storage:	Store at -20°C as received.
Stability:	Stable for 12 months from date of receipt.
Predicted Protein Size:	199526 Da
Gene Name:	microtubule associated protein 2
Database Link:	<a href="#">NP_114034</a> <a href="#">Entrez Gene 4133 Human</a> <a href="#">P11137</a>
Synonyms:	DKFZp686I2148; MAP2A; MAP2B; MAP2C; microtubule-associated protein 2; OTTHUMP00000163916
Protein Families:	Adult stem cells, Druggable Genome, ES Cell Differentiation/IPS



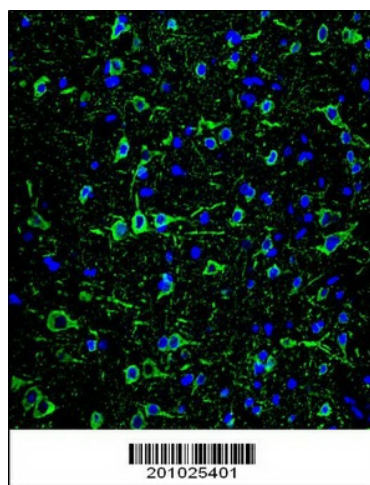
[View online »](#)

**Product images:**

MAP2 Antibody (Cat. #[TA324336]) western blot analysis in MCF-7 cell line lysates (15ug/lane). This demonstrates the MAP2 antibody detected the MAP2 protein (arrow) (1:1000).



MAP2 Antibody (Ascites) (Cat. # [TA324336]) immunohistochemistry analysis in formalin fixed and paraffin embedded human brain tissue followed by peroxidase conjugation of the secondary antibody and DAB staining. This data demonstrates the use of MAP2 Antibody (Ascites) for immunohistochemistry. Clinical relevance has not been evaluated.



Confocal immunofluorescent analysis of MAP2 Antibody (Cat#[TA324336]) with brain tissue followed by Alexa Fluor 488-conjugated goat anti-mouse IgG (green). DAPI was used to stain the cell nuclear (blue).