

## Product datasheet for **TA324335S**

### EIF4E Mouse Monoclonal Antibody [Clone ID: 163CT48.1.9]

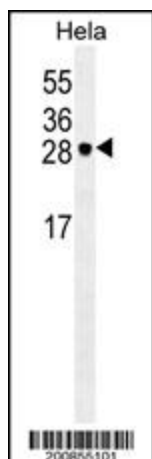
#### Product data:

Product Type:	Primary Antibodies
Clone Name:	163CT48.1.9
Applications:	IF, WB
Recommended Dilution:	IF: 1:10~50, WB: 1:100~500
Reactivity:	Human
Host:	Mouse
Isotype:	IgG1, kappa
Clonality:	Monoclonal
Immunogen:	This EIF4E monoclonal antibody is generated from mouse immunized with EIF4E recombinant protein.
Formulation:	Purified monoclonal antibody supplied in PBS with 0.09% (W/V) sodium azide.
Concentration:	lot specific
Purification:	This antibody is purified through a protein G column, followed by dialysis against PBS.
Conjugation:	Unconjugated
Storage:	Store at -20°C as received.
Stability:	Stable for 12 months from date of receipt.
Predicted Protein Size:	25097 Da
Gene Name:	eukaryotic translation initiation factor 4E
Database Link:	<a href="#">NP_001959</a> <a href="#">Entrez Gene 1977 Human</a> <a href="#">P06730</a>
Synonyms:	AUTS19; CBP; eIF-4E; EIF4E1; EIF4EL1; EIF4F
Protein Pathways:	Insulin signaling pathway, mTOR signaling pathway

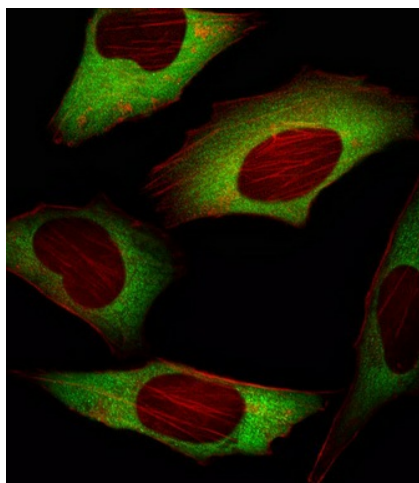


[View online »](#)

## Product images:



EIF4E Antibody (Cat. #TA324335S) western blot analysis in HeLa cell line lysates (35ug/lane). This demonstrates the EIF4E antibody detected the EIF4E protein (arrow).



IF image of HeLa cell stained with EIF4E Antibody (Cat#[TA324335S]/SG101020AF). HeLa cells were incubated with EIF4E primary antibody (1:25, 1 h at 37°C). For secondary antibody, Alexa Fluor® 488 conjugated donkey anti-mouse antibody (green) was used (1:400). Cytoplasmic actin was counterstained with Alexa Fluor® 555 (red) conjugated Phalloidin (7 units/ml). EIF4E immunoreactivity is localized to Cytoplasm significantly.