

Product datasheet for **TA324333S**

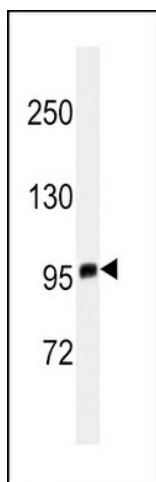
EZH2 Mouse Monoclonal Antibody [Clone ID: 144CT2.1.1.5]

Product data:

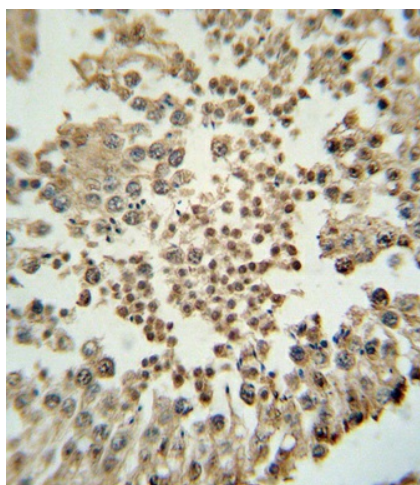
Product Type:	Primary Antibodies
Clone Name:	144CT2.1.1.5
Applications:	IF, IHC, WB
Recommended Dilution:	IF: 1:10~50, WB: 1:100~500, IHC: 1:10~50
Reactivity:	Human (Predicted: Monkey)
Host:	Mouse
Isotype:	IgG1/IgK
Clonality:	Monoclonal
Immunogen:	This EZH2 antibody is generated from mouse immunized with EZH2 recombinant protein.
Formulation:	Purified monoclonal antibody supplied in PBS with 0.09% (W/V) sodium azide.
Concentration:	lot specific
Purification:	This antibody is purified through a protein G column, followed by dialysis against PBS.
Conjugation:	Unconjugated
Storage:	Store at -20°C as received.
Stability:	Stable for 12 months from date of receipt.
Predicted Protein Size:	85363 Da
Gene Name:	enhancer of zeste 2 polycomb repressive complex 2 subunit
Database Link:	NP_694543 Entrez Gene 709075 Monkey Entrez Gene 2146 Human Q15910
Synonyms:	ENX-1; ENX1; EZH1; EZH2b; KMT6; KMT6A; WVS; WVS2
Protein Families:	Druggable Genome, Transcription Factors



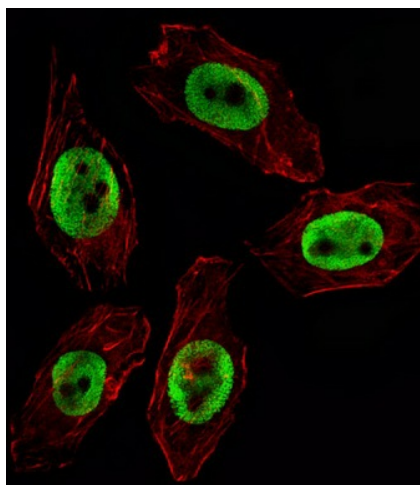
[View online »](#)

Product images:

Western blot analysis of EZH2 antibody (Cat. # [TA324333]) in T47D cell line lysates (35ug/lane).EZH2 (arrow) was detected using the purified Mab.



EZH2 Monoclonal Antibody (Cat. #[TA324333]) immunohistochemistry analysis in formalin fixed and paraffin embedded human testis tissue followed by peroxidase conjugation of the secondary antibody and DAB staining. This data demonstrates the use of the EZH2 Monoclonal Antibody for immunohistochemistry. Clinical relevance has not been evaluated.



IF image of U251 cell stained with EZH2 Antibody (Cat#[TA324333]/SG100830AA).U251 cells were incubated with EZH2 primary antibody (1:25, 1 h at 37°C). For secondary antibody, Alexa Fluor® 488 conjugated donkey anti-mouse antibody (green) was used (1:400).Cytoplasmic actin was counterstained with Alexa Fluor® 555 (red) conjugated Phalloidin (7 units/ml).EZH2 immunoreactivity is localized to Nucleus significantly.