

Product datasheet for **TA324332S**

ALDH2 Mouse Monoclonal Antibody [Clone ID: 138CT22.3.8]

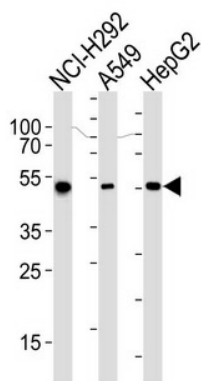
Product data:

Product Type:	Primary Antibodies
Clone Name:	138CT22.3.8
Applications:	FC, IF, IHC, WB
Recommended Dilution:	WB: 1:1000, IHC: 1:50~100, FC: 1:10~50, IF: 1:10~50
Reactivity:	Human
Host:	Mouse
Isotype:	IgG1
Clonality:	Monoclonal
Immunogen:	This ALDH2 Monoclonal antibody is generated from mouse immunized with ALDH2 recombinant protein.
Formulation:	Purified monoclonal antibody supplied in PBS with 0.09% (W/V) sodium azide.
Concentration:	lot specific
Purification:	This antibody is purified through a protein G column, followed by dialysis against PBS.
Conjugation:	Unconjugated
Storage:	Store at -20°C as received.
Stability:	Stable for 12 months from date of receipt.
Predicted Protein Size:	56381 Da
Gene Name:	aldehyde dehydrogenase 2 family (mitochondrial)
Database Link:	NP_000681 Entrez Gene 217 Human P05091
Synonyms:	ALDH-E2; ALDHI; ALDM
Protein Families:	Druggable Genome

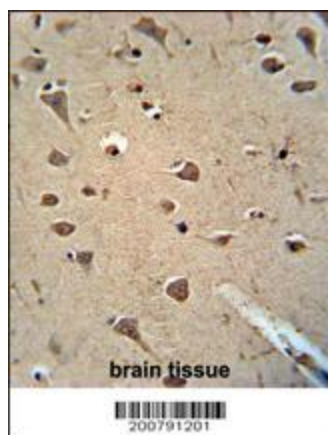

[View online »](#)

Protein Pathways:

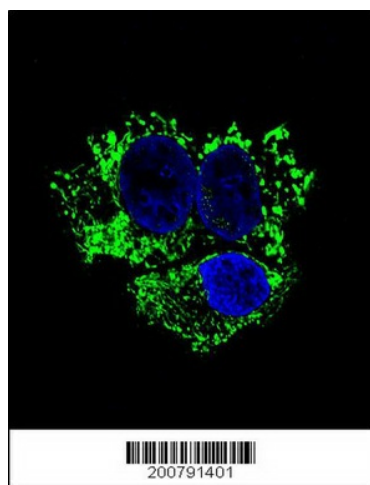
Arginine and proline metabolism, Ascorbate and aldarate metabolism, beta-Alanine metabolism, Butanoate metabolism, Fatty acid metabolism, Glycerolipid metabolism, Glycolysis / Gluconeogenesis, Histidine metabolism, Limonene and pinene degradation, Lysine degradation, Metabolic pathways, Propanoate metabolism, Pyruvate metabolism, Tryptophan metabolism, Valine, leucine and isoleucine degradation

Product images:


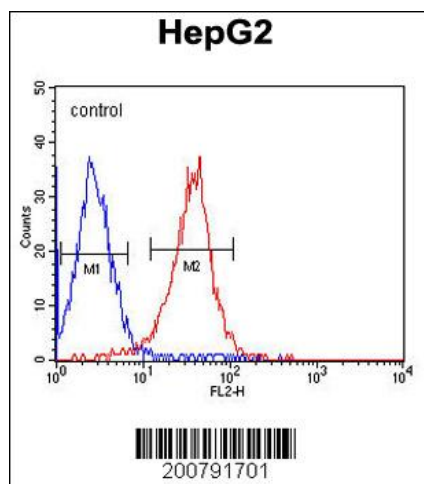
Western blot analysis of lysates from NCI-H292, A549, HepG2 cell line (from left to right), using ALDH2 Antibody (Cat. #TA324332). [TA324332] was diluted at 1:1000 at each lane. A goat anti-mouse IgG H&L (HRP) at 1:3000 dilution was used as the secondary antibody. Lysates at 35ug per lane.



ALDH2 Monoclonal Antibody (Cat. #TA324332) immunohistochemistry analysis in formalin fixed and paraffin embedded human brain tissue followed by peroxidase conjugation of the secondary antibody and DAB staining. This data demonstrates the use of the ALDH2 Monoclonal Antibody for immunohistochemistry. Clinical relevance has not been evaluated.



Confocal immunofluorescent analysis of ALDH2 Antibody (Cat#[TA324332]) with HepG2 cell followed by Alexa Fluor 488-conjugated goat anti-mouse IgG (green). DAPI was used to stain the cell nuclear (blue).



ALDH2 Monoclonal Antibody (Cat. #[TA324332]) flow cytometric analysis of HepG2 cells (right histogram) compared to a negative control cell (left histogram). PE-conjugated goat-anti-mouse secondary antibodies were used for the analysis.