

Product datasheet for **TA324327**

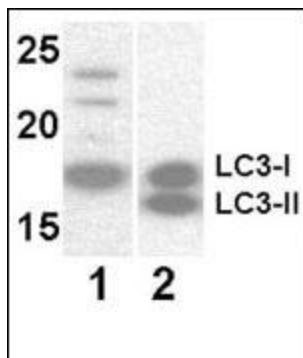
MAP1LC3A Mouse Monoclonal Antibody [Clone ID: 166AT1234]

Product data:

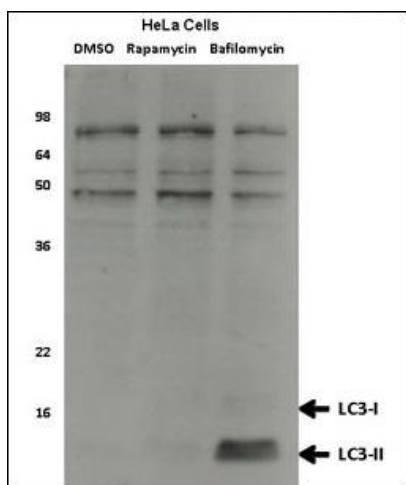
Product Type:	Primary Antibodies
Clone Name:	166AT1234
Applications:	IF, IHC, WB
Recommended Dilution:	IF: 1:200, WB: 1:1000, IHC: 1:50~100
Reactivity:	Human, Mouse, Rat
Host:	Mouse
Isotype:	IgG1, kappa
Clonality:	Monoclonal
Immunogen:	This LC3 antibody is generated from mouse immunized with a full length recombinant protein of human LC3 (APG8).
Formulation:	Purified monoclonal antibody supplied in PBS with 0.09% (W/V) sodium azide.
Concentration:	lot specific
Purification:	This antibody is purified through a protein G column, followed by dialysis against PBS.
Conjugation:	Unconjugated
Storage:	Store at -20°C as received.
Stability:	Stable for 12 months from date of receipt.
Predicted Protein Size:	14272 Da
Gene Name:	microtubule associated protein 1 light chain 3 alpha
Database Link:	NP_115903 Entrez Gene 66734 Mouse Entrez Gene 362245 Rat Entrez Gene 84557 Human Q9H492
Synonyms:	ATG8E; LC3; LC3A; MAP1ALC3; MAP1BLC3



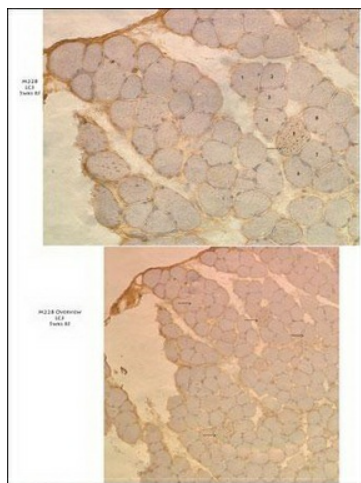
[View online »](#)

Product images:


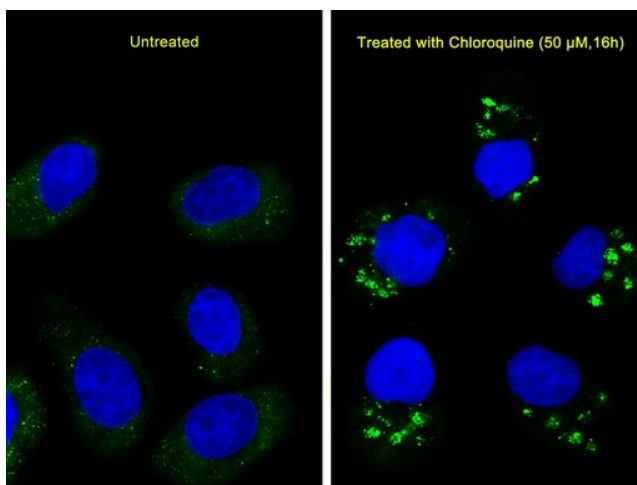
Western blot analysis of anti-LC3 Mab (Cat. #TA324327) at 8 ug/ml. Lane 1: Y79 (soluble fraction of cell extract); Lane 2: 293 transfected with human LC3 (whole cell extract).



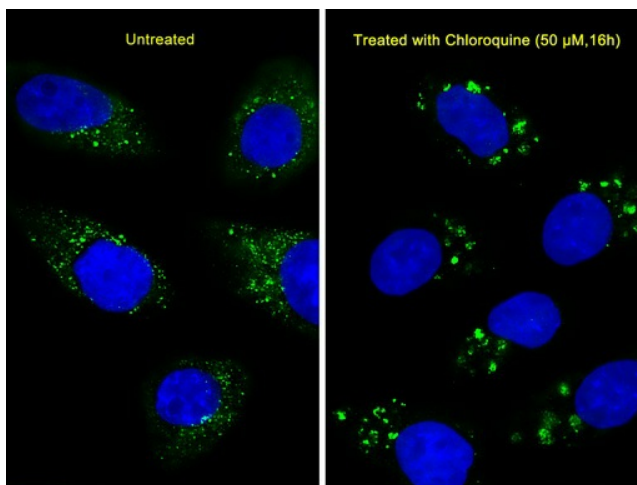
Western blot analysis of anti-LC3 Mab (Cat. #TA324327) HeLa cell lysates, which were treated with rapamycin or bafilomycin overnight. Data courtesy of Dr. David Rubinsztein, Cambridge Institute for Medical Research.



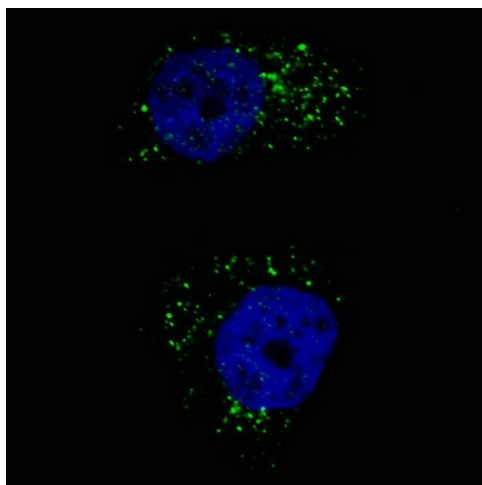
10X (lower panel) and 20X (upper panel) immunohistochemistry images from muscle tissue of a diseased mouse off Dox after 5 weeks on regular food. Several fibers that have autophagic vesicles throughout are visible. Primary antibody used is Cat# TA324327. Data courtesy of Dr. Christy Caudill, Cincinnati Children's Hospital Medical Center.



Immunofluorescent analysis of U251 cells, using LC3 Antibody (APG8) (Cat. #TA324327). U251 cells (right) were treated with Chloroquine (50 μ M, 16h). TA324327 was diluted at 1:25 dilution. Dylight Fluor 488-conjugated goat anti-mouse IgG at 1:400 dilution was used as the secondary antibody (green). DAPI was used to stain the cell nuclear (blue).



Immunofluorescent analysis of U251 cells, using LC3 Antibody (APG8) (Cat. #TA324327). U251 cells (right) were treated with Chloroquine (50 μ M, 16h). TA324327 was diluted at 1:25 dilution. Dylight Fluor 488-conjugated goat anti-mouse IgG at 1:400 dilution was used as the secondary antibody (green). DAPI was used to stain the cell nuclear (blue).



IF image of U251 cells stained with TA324327 LC3 (APG8) antibody. U251 cells were treated with Chloroquine, then incubated with TA324327 LC3 (APG8) primary antibody (1:200, 2 h at RT). For secondary antibody, Alexa Fluor® 488 conjugated donkey anti-mouse antibody (green) was used (1:1000, 1 h). Nuclei were counterstained with Hoechst 33342 (blue). LC3 immunoreactivity is localized to autophagic vacuoles in the cytoplasm of U251 cells.