

## Product datasheet for **TA324321**

### **MET Mouse Monoclonal Antibody [Clone ID: 4AT259]**

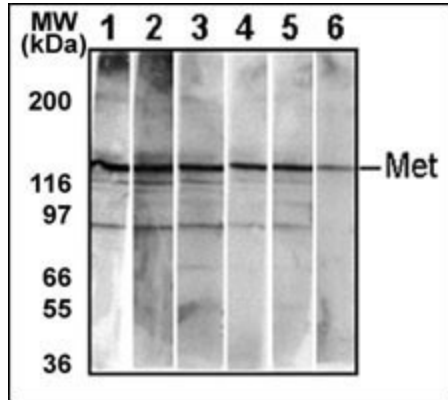
#### **Product data:**

|                                |  |
|--------------------------------|--|
| <b>Product Type:</b>           | Primary Antibodies   |
| <b>Clone Name:</b>             | 4AT259   |
| <b>Applications:</b>           | IF, WB   |
| <b>Recommended Dilution:</b>   | IF: 1:200, WB: 1:100~500   |
| <b>Reactivity:</b>             | Human, Mouse   |
| <b>Host:</b>                   | Mouse  |
| <b>Isotype:</b>                | IgG1   |
| <b>Clonality:</b>              | Monoclonal   |
| <b>Immunogen:</b>              | This monoclonal antibody is generated from mice immunized with purified recombinant protein encoding the catalytic domain of human Met.  |
| <b>Formulation:</b>            | Purified monoclonal antibody supplied in PBS with 0.09% (W/V) sodium azide.  |
| <b>Concentration:</b>          | lot specific   |
| <b>Purification:</b>           | This antibody is purified through a protein G column, followed by dialysis against PBS.  |
| <b>Conjugation:</b>            | Unconjugated   |
| <b>Storage:</b>                | Store at -20°C as received.  |
| <b>Stability:</b>              | Stable for 12 months from date of receipt.   |
| <b>Predicted Protein Size:</b> | 155541 Da  |
| <b>Gene Name:</b>              | MET proto-oncogene, receptor tyrosine kinase   |
| <b>Database Link:</b>          | <a href="#">NP_000236</a><br><a href="#">Entrez Gene 17295 Mouse</a> <a href="#">Entrez Gene 4233 Human</a><br><a href="#">P08581</a>  |
| <b>Synonyms:</b>               | AUTS9; c-Met; DFNB97; HGFR; RCCP2  |
| <b>Protein Families:</b>       | Druggable Genome, Protein Kinase, Transmembrane  |
| <b>Protein Pathways:</b>       | Adherens junction, Axon guidance, Colorectal cancer, Cytokine-cytokine receptor interaction, Endocytosis, Epithelial cell signaling in Helicobacter pylori infection, Focal adhesion, Melanoma, Pathways in cancer, Renal cell carcinoma |

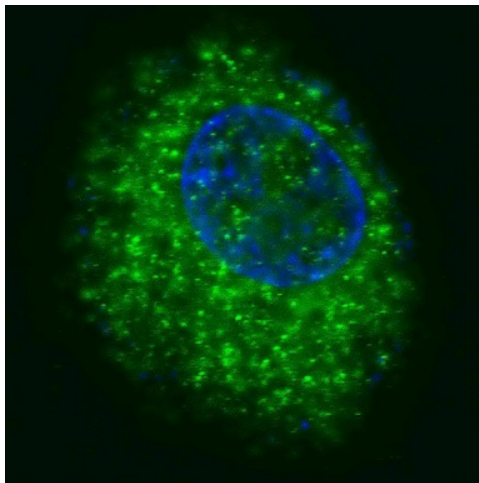


[View online »](#)

## Product images:



Detection of endogenous Met in HepG2 cell line. 10 ug/lane of HepG2 cell lysate was used to examine the expression of human Met. Lanes 1-5 represent Abgent's different anti-Met monoclonal antibodies that are Cat# AM1001-1005. Lane 6 represents auto-phosphorylated-Met in HepG2 cell line detected by anti-phospho-Met Mab (Cat# AM1000).



IF image of HepG2 cells stained with MET/HGFR antibody. HepG2 cells were incubated with TA324321 MET/HGFR primary antibody (1:200, 2 h at RT). For secondary antibody, Alexa Fluor® 488 conjugated donkey anti-mouse antibody (green) was used (1:1000, 1h). Nuclei were counterstained with Hoechst 33342 (blue). Note the highly specific localization of the MET immunosignal to the cytoplasm, supported by Human Protein Atlas Data (<http://www.proteinatlas.org/ENSG00000105976>).