

Product datasheet for **TA324318**

MET Mouse Monoclonal Antibody [Clone ID: 4AT44]

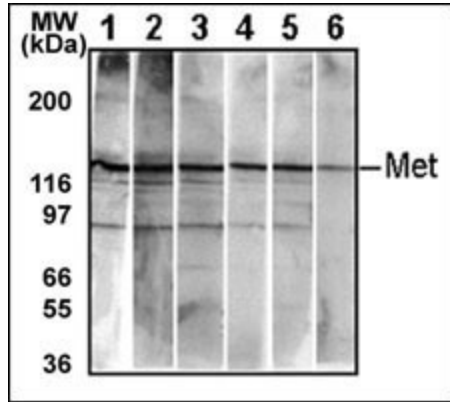
Product data:

Product Type:	Primary Antibodies
Clone Name:	4AT44
Applications:	IF, IHC, WB
Recommended Dilution:	WB: 1:100~500, IF: 1:100, IHC: 1:50~100
Reactivity:	Human, Mouse
Host:	Mouse
Isotype:	IgG1
Clonality:	Monoclonal
Immunogen:	This monoclonal antibody is generated from mice immunized with purified recombinant protein encoding the catalytic domain of human Met.
Formulation:	Purified monoclonal antibody supplied in PBS with 0.09% (W/V) sodium azide.
Concentration:	lot specific
Purification:	This antibody is purified through a protein G column, followed by dialysis against PBS.
Conjugation:	Unconjugated
Storage:	Store at -20°C as received.
Stability:	Stable for 12 months from date of receipt.
Predicted Protein Size:	155541 Da
Gene Name:	MET proto-oncogene, receptor tyrosine kinase
Database Link:	NP_000236 Entrez Gene 17295 Mouse Entrez Gene 4233 Human P08581
Synonyms:	AUTS9; c-Met; DFNB97; HGFR; RCCP2
Protein Families:	Druggable Genome, Protein Kinase, Transmembrane
Protein Pathways:	Adherens junction, Axon guidance, Colorectal cancer, Cytokine-cytokine receptor interaction, Endocytosis, Epithelial cell signaling in Helicobacter pylori infection, Focal adhesion, Melanoma, Pathways in cancer, Renal cell carcinoma

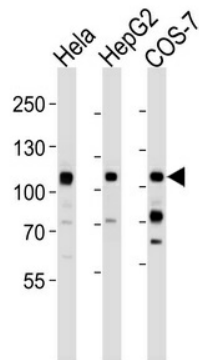


[View online »](#)

Product images:



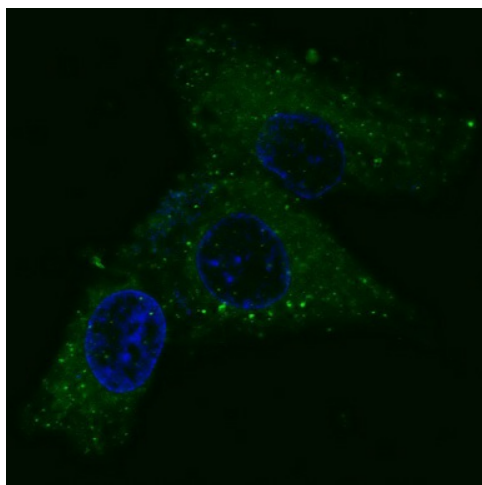
Detection of endogenous Met in HepG2 cell line. 10 ug/lane of HepG2 cell lysate was used to examine the expression of human Met. Lanes 1-5 represent Abgent's different anti-Met monoclonal antibodies that are Cat# AM1001-1005. Lane 6 represents auto-phosphorylated-Met in HepG2 cell line detected by anti-phospho-Met Mab (Cat# AM1000).



Western blot analysis of lysates from HeLa, HepG2, COS-7 cell line (from left to right), using MET/HGFR Antibody (4AT44). 4AT44 was diluted at 1:1000 at each lane. A goat anti-mouse IgG H&L (HRP) at 1:3000 dilution was used as the secondary antibody. Lysates at 35ug per lane.



Formalin-fixed and paraffin-embedded human colon carcinoma tissue reacted with MET/HGFR Antibody (Cat.#TA324318), which was peroxidase-conjugated to the secondary antibody, followed by DAB staining. This data demonstrates the use of this antibody for immunohistochemistry; clinical relevance has not been evaluated.



IF image of HepG2 cells stained with MET/HGFR antibody. HepG2 cells were incubated with TA324318 MET/HGFR primary antibody (1:100, 2 h at RT). For secondary antibody, Alexa Fluor® 488 conjugated donkey anti-mouse antibody (green) was used (1:1000, 1h). Nuclei were counterstained with Hoechst 33342 (blue). Note the highly specific localization of the MET immunosignal to the cytoplasm, supported by Human Protein Atlas Data (<http://www.proteinatlas.org/ENSG00000105976>).