

## Product datasheet for **TA324317S**

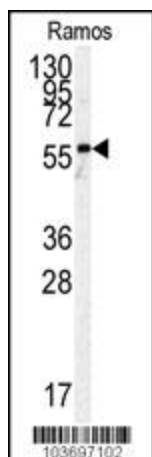
### **PKM2 (PKM) Rabbit Polyclonal Antibody**

#### **Product data:**

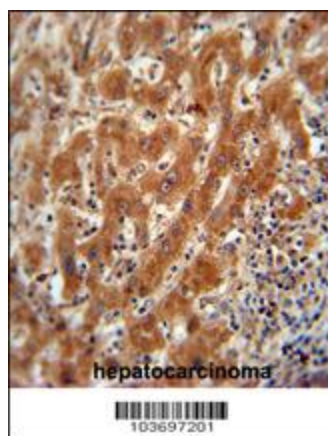
<b>Product Type:</b>	Primary Antibodies
<b>Applications:</b>	IF, IHC, WB
<b>Recommended Dilution:</b>	IF: 1:200, WB: 1:1000, IHC: 1:50~1:100
<b>Reactivity:</b>	Human, Mouse, Rat, Monkey
<b>Host:</b>	Rabbit
<b>Isotype:</b>	IgG
<b>Clonality:</b>	Polyclonal
<b>Immunogen:</b>	This Pyruvate Kinase (PKM2) antibody is generated from rabbits immunized with a KLH conjugated synthetic peptide between 476-505 amino acids from the C-terminal region of human Pyruvate Kinase (PKM2).
<b>Formulation:</b>	Purified polyclonal antibody supplied in PBS with 0.09% (W/V) sodium azide.
<b>Concentration:</b>	lot specific
<b>Purification:</b>	This antibody is prepared by Saturated Ammonium Sulfate (SAS) precipitation followed by dialysis against PBS.
<b>Conjugation:</b>	Unconjugated
<b>Storage:</b>	Store at -20°C as received.
<b>Stability:</b>	Stable for 12 months from date of receipt.
<b>Predicted Protein Size:</b>	57937 Da
<b>Gene Name:</b>	pyruvate kinase, muscle
<b>Database Link:</b>	<a href="#">NP_872271</a> <a href="#">Entrez Gene 18746 Mouse</a> <a href="#">Entrez Gene 25630 Rat</a> <a href="#">Entrez Gene 697742 Monkey</a> <a href="#">Entrez Gene 5315 Human</a> <a href="#">P14618</a>
<b>Synonyms:</b>	CTHBP; HEL-S-30; OIP3; PK3; PKM2; TCB; THBP1
<b>Protein Families:</b>	Druggable Genome
<b>Protein Pathways:</b>	Glycolysis / Gluconeogenesis, Metabolic pathways, Purine metabolism, Pyruvate metabolism, Type II diabetes mellitus


[View online »](#)

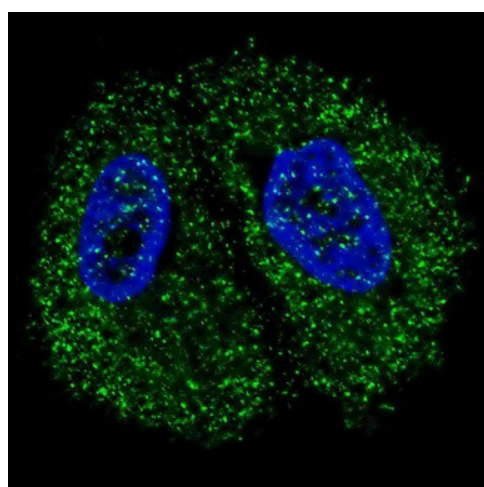
## Product images:



Western blot analysis of anti-h PKM2-N491 Pab (Cat. # [TA324317]) in Ramos cell line lysates (35ug/lane). hPKM2-N491 (arrow) was detected using the purified Pab.



Pyruvate Kinase (PKM2) Antibody (C-term) (Cat. # [TA324317]) immunohistochemistry analysis in formalin fixed and paraffin embedded human hepatocarcinoma followed by peroxidase conjugation of the secondary antibody and DAB staining. This data demonstrates the use of the Pyruvate Kinase (PKM2) Antibody (C-term) for immunohistochemistry. Clinical relevance has not been evaluated.



IF image of MCF7 cells stained with Pyruvate Kinase (PKM2) (C-term) antibody. MCF7 cells were incubated with [TA324317] Pyruvate Kinase (PKM2) (C-term) primary antibody (1:200, 2 h at RT). For secondary antibody, Alexa Fluor® 488 conjugated donkey anti-rabbit antibody (green) was used (1:1000, 1h). Nuclei were counterstained with Hoechst 33342 (blue). Note the highly specific localization of the Pyruvate Kinase (PKM2) mainly to the cytoplasm.