

## Product datasheet for **TA324316S**

### MSK2 / RSK-B (RPS6KA4) Rabbit Polyclonal Antibody

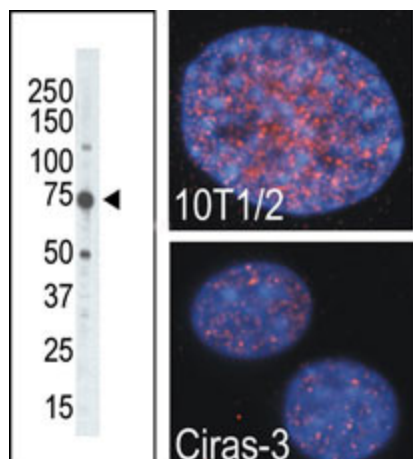
#### Product data:

Product Type:	Primary Antibodies
Applications:	WB
Recommended Dilution:	WB: 1:1000
Reactivity:	Human, Mouse
Host:	Rabbit
Isotype:	IgG
Clonality:	Polyclonal
Immunogen:	This RSKB (MSK2) antibody is generated from rabbits immunized with a KLH conjugated synthetic peptide between 322-354 amino acids from the C-terminal region of human RSKB (MSK2).
Formulation:	Purified polyclonal antibody supplied in PBS with 0.09% (W/V) sodium azide.
Concentration:	lot specific
Purification:	This antibody is prepared by Saturated Ammonium Sulfate (SAS) precipitation followed by dialysis against PBS.
Conjugation:	Unconjugated
Storage:	Store at -20°C as received.
Stability:	Stable for 12 months from date of receipt.
Predicted Protein Size:	85606 Da
Gene Name:	ribosomal protein S6 kinase A4
Database Link:	<a href="#">NP_001006945</a> <a href="#">Entrez Gene 56613 Mouse</a> <a href="#">Entrez Gene 8986 Human</a> <a href="#">O75676</a>
Synonyms:	MSK2; RSK-B
Protein Families:	Druggable Genome, Protein Kinase, Transcription Factors
Protein Pathways:	MAPK signaling pathway, Neurotrophin signaling pathway



[View online »](#)

## Product images:



The anti-MSK2 Pab (Cat. #[TA324316]) is used in Western blot to detect MSK2 in placenta tissue lysate. Indirect immunofluorescence analysis showed that MSK2 is predominantly localized in the nucleus of parental (10T1/2) and oncogene-transformed (Ciras-3) mouse fibroblasts. Cells were co-stained with DAPI to visualize nucleus compartment. Data is kindly provided by B. Drobic and Dr. J. Davie from University of Manitoba (Winnipeg, Canada).