

Product datasheet for **TA324315S**

STUB1 Rabbit Polyclonal Antibody

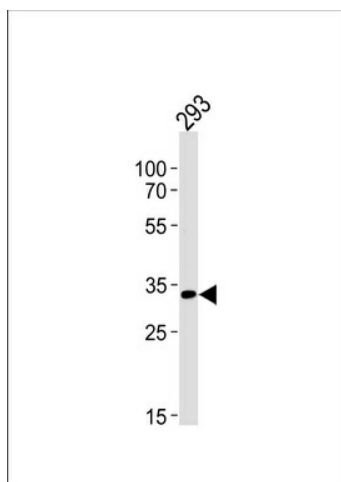
Product data:

Product Type:	Primary Antibodies
Applications:	IHC, WB
Recommended Dilution:	WB: 1:1000, IHC: 1:50~100
Reactivity:	Human (Predicted: Mouse, Chicken)
Host:	Rabbit
Isotype:	IgG
Clonality:	Polyclonal
Immunogen:	This STUB1 antibody is generated from rabbits immunized with a KLH conjugated synthetic peptide between 203-231 amino acids from the C-terminal region of human STUB1.
Formulation:	Purified polyclonal antibody supplied in PBS with 0.09% (W/V) sodium azide.
Concentration:	lot specific
Purification:	This antibody is purified through a protein A column, followed by peptide affinity purification.
Conjugation:	Unconjugated
Storage:	Store at -20°C as received.
Stability:	Stable for 12 months from date of receipt.
Predicted Protein Size:	34856 Da
Gene Name:	STIP1 homology and U-box containing protein 1
Database Link:	NP_005852 Entrez Gene 56424 Mouse Entrez Gene 10273 Human Q9UNE7
Synonyms:	CHIP; HSPABP2; NY-CO-7; SCAR16; SDCCAG7; UBOX1
Protein Families:	Druggable Genome
Protein Pathways:	Ubiquitin mediated proteolysis

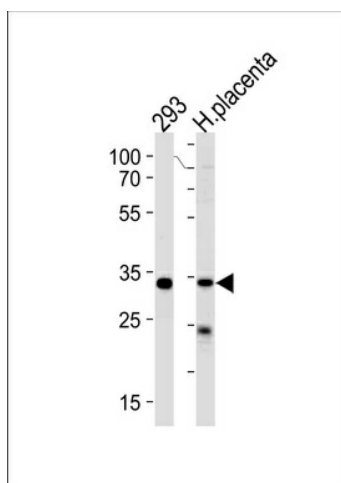


[View online »](#)

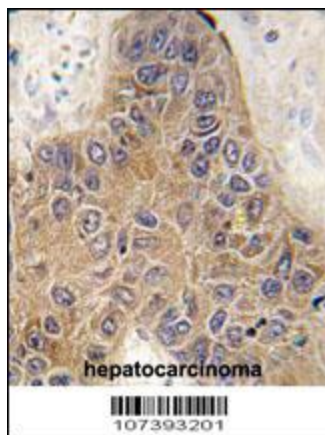
Product images:



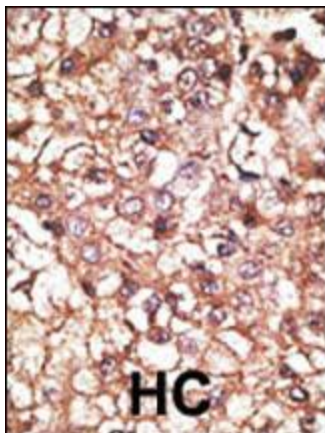
CHIP Antibody (C-term) (Cat.# [TA324315])
western blot analysis in 293 cell line lysates
(35ug/lane). This demonstrates the CHIP antibody
detected the CHIP protein (arrow).



CHIP Antibody (C-term) (Cat.# [TA324315])
western blot analysis in 293 cell line and human
placenta lysates (35ug/lane). This demonstrates
the CHIP antibody detected the CHIP protein
(arrow).



Formalin-fixed and paraffin-embedded human hepatocarcinoma tissue reacted with CHIP (STUB1) antibody (C-term) (Cat.#[TA324315]), which was peroxidase-conjugated to the secondary antibody, followed by DAB staining. This data demonstrates the use of this antibody for immunohistochemistry; clinical relevance has not been evaluated.



Formalin-fixed and paraffin-embedded human cancer tissue reacted with the primary antibody, which was peroxidase-conjugated to the secondary antibody, followed by AEC staining. This data demonstrates the use of this antibody for immunohistochemistry; clinical relevance has not been evaluated. BC = breast carcinoma; HC = hepatocarcinoma.