

Product datasheet for **TA324311**

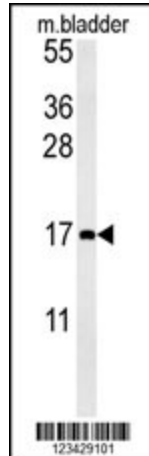
Macrophage Inflammatory Protein 1 beta (CCL4L2) Rabbit Polyclonal Antibody

Product data:

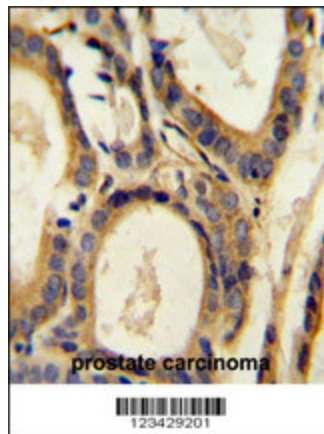
Product Type:	Primary Antibodies
Applications:	IHC, WB
Recommended Dilution:	WB: 1:1000, IHC: 1:50~100
Reactivity:	Human, Mouse
Host:	Rabbit
Isotype:	IgG
Clonality:	Polyclonal
Immunogen:	This CCL4 antibody is generated from rabbits immunized with a KLH conjugated synthetic peptide between 22-48 amino acids from the Central region of human CCL4.
Formulation:	Purified polyclonal antibody supplied in PBS with 0.09% (W/V) sodium azide.
Concentration:	lot specific
Purification:	This antibody is purified through a protein A column, followed by peptide affinity purification.
Conjugation:	Unconjugated
Storage:	Store at -20°C as received.
Stability:	Stable for 12 months from date of receipt.
Predicted Protein Size:	10212 Da
Gene Name:	C-C motif chemokine ligand 4 like 2
Database Link:	NP_001001435 Entrez Gene 9560 Human Q8NHW4
Synonyms:	AT744.2; CCL4L; LAG-1; LAG1; SCYA4L
Protein Families:	Druggable Genome, Transmembrane
Protein Pathways:	Chemokine signaling pathway, Cytokine-cytokine receptor interaction, Cytosolic DNA-sensing pathway



[View online »](#)

Product images:

CCL4 Antibody (Center) (Cat. #TA324311) western blot analysis in mouse bladder tissue lysates (15ug/lane). This demonstrates the CCL4 antibody detected CCL4 protein (arrow).



CCL4 Antibody (Center) (Cat. #TA324311) immunohistochemistry analysis in formalin fixed and paraffin embedded human prostate carcinoma followed by peroxidase conjugation of the secondary antibody and DAB staining. This data demonstrates the use of the CCL4 Antibody (Center) for immunohistochemistry. Clinical relevance has not been evaluated.