

## Product datasheet for **TA324310S**

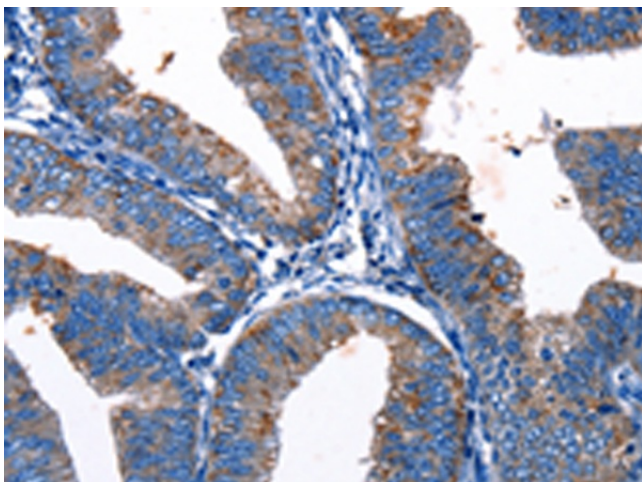
### Gjc3 Rabbit Polyclonal Antibody

#### Product data:

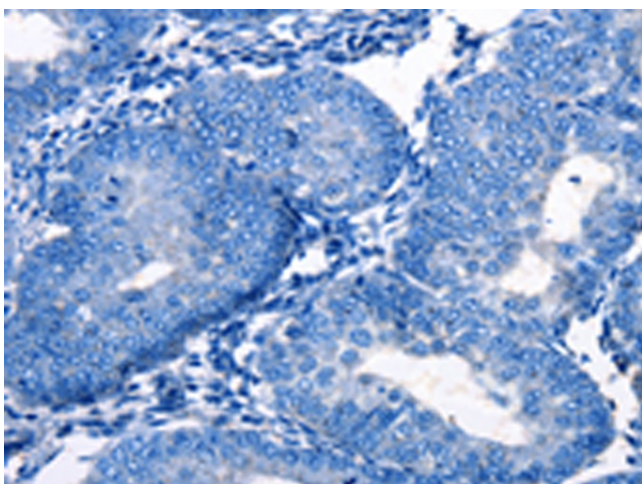
Product Type:	Primary Antibodies
Applications:	IHC
Recommended Dilution:	IHC: 10-50 Positive control: Human cervical cancer Predicted cell location: Cytoplasm
Reactivity:	Human, Mouse
Host:	Rabbit
Isotype:	IgG
Clonality:	Polyclonal
Immunogen:	Synthetic peptide corresponding to a region derived from 50-64 amino acids of Mouse gap junction protein, gamma 3
Formulation:	PBS pH7.3, 0.05% NaN <sub>3</sub> , 50% glycerol
Purification:	Antigen affinity purification
Conjugation:	Unconjugated
Storage:	Store at -20°C as received.
Stability:	Stable for 12 months from date of receipt.
Gene Name:	gap junction protein, gamma 3
Database Link:	<a href="#">NP_536698</a> <a href="#">Entrez Gene 349149 Human</a> <a href="#">Entrez Gene 118446 Mouse</a> <a href="#">Q921C1</a>
Background:	Gap junction gamma-3; also known as connexin-30.2 (Cx30.2) or connexin-31.3 (Cx31.3) or gap junction epsilon-1 (GJE1); is a protein that in humans is encoded by the GJC3 gene. GJC3 is a connexin. This gene encodes a gap junction protein. The encoded protein; also known as a connexin; plays a role in formation of gap junctions; which provide direct connections between neighboring cells. Mutations in this gene have been reported to be associated with nonsyndromic hearing loss.
Synonyms:	Connexin-30.2; Connexin-31.3; Cx29; CX30.2; Cx31.3; GJE1



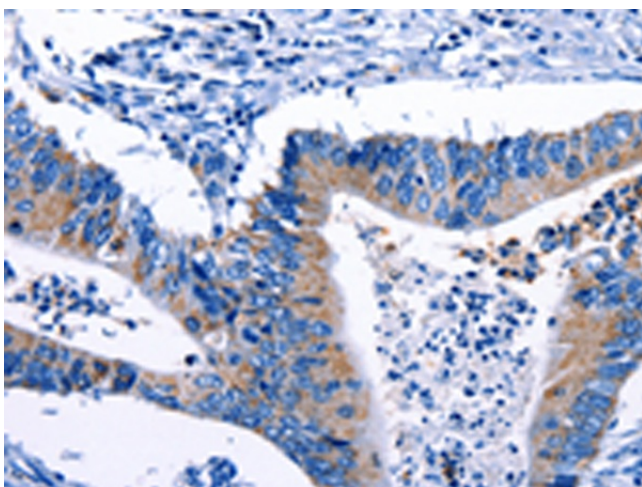
[View online »](#)

**Product images:**

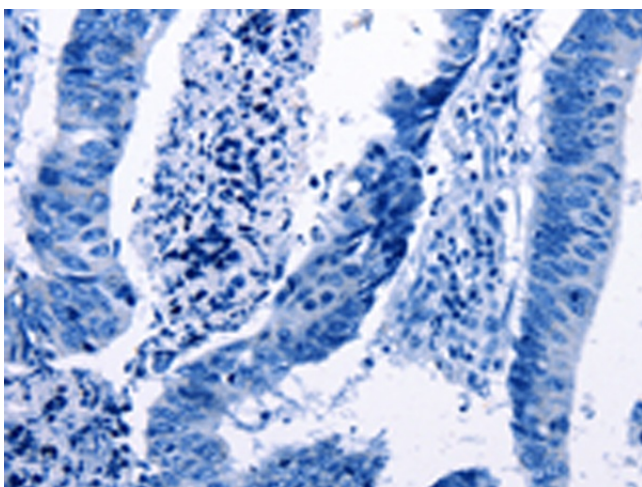
Immunohistochemistry of paraffin-embedded Human cervical cancer tissue using [TA324310] (Gjc3 Antibody) at dilution 1/10 (Original magnification:  $\times 200$ )



Immunohistochemistry of paraffin-embedded Human cervical cancer tissue using [TA324310] (Gjc3 Antibody) at dilution 1/10, treated with synthetic peptide. (Original magnification:  $\times 200$ )



Immunohistochemistry of paraffin-embedded Human colon cancer tissue using [TA324310] (Gjc3 Antibody) at dilution 1/10 (Original magnification:  $\times 200$ )



Immunohistochemistry of paraffin-embedded Human colon cancer tissue using [TA324310] (Gjc3 Antibody) at dilution 1/10, treated with synthetic peptide. (Original magnification:  $\times 200$ )