

Product datasheet for **TA324308S**

Dap3 Rabbit Polyclonal Antibody

Product data:

Product Type:	Primary Antibodies
Applications:	IHC, WB
Recommended Dilution:	WB: 500-1000 WB positive control: Hepg2 and Jurkat cells IHC: 10-50 Positive control: Human thyroid cancer Predicted cell location: Cytoplasm
Reactivity:	Human, Mouse
Host:	Rabbit
Isotype:	IgG
Clonality:	Polyclonal
Immunogen:	Synthetic peptide corresponding to a region derived from 44-57 amino acids of Mouse death associated protein 3
Formulation:	PBS pH7.3, 0.05% NaN ₃ , 50% glycerol
Purification:	Antigen affinity purification
Conjugation:	Unconjugated
Storage:	Store at -20°C as received.
Stability:	Stable for 12 months from date of receipt.
Predicted Protein Size:	45 kDa
Gene Name:	death associated protein 3
Database Link:	NP_075370 Entrez Gene 7818 Human Entrez Gene 65111 Mouse Q9ER88



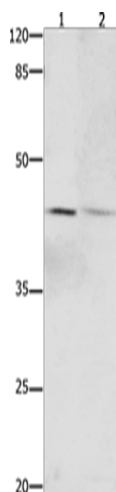
[View online »](#)

Background:

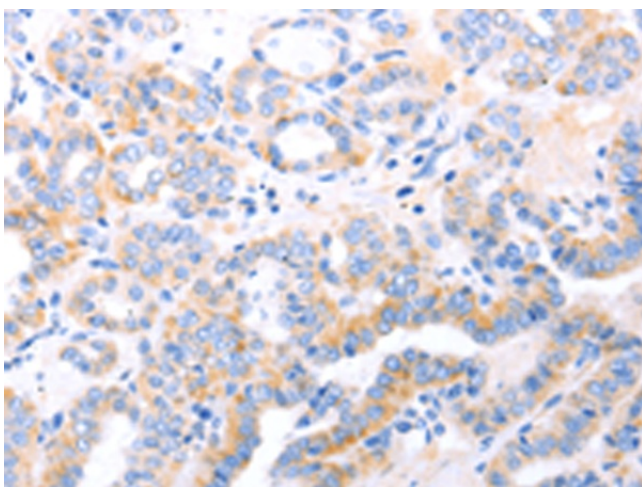
28S ribosomal protein S29; mitochondrial is a protein that in humans is encoded by the DAP3 gene. Mammalian mitochondrial ribosomal proteins are encoded by nuclear genes and help in protein synthesis within the mitochondrion. Mitochondrial ribosomes (mitoribosomes) consist of a small 28S subunit and a large 39S subunit. This protein potentially binds ATP/GTP and might be a functional partner of the mitoribosomal protein S27. Splice variants that differ in the 5' UTR have been found for this gene; both variants encode the same protein. Pseudogenes corresponding to this gene are found on chromosomes 1q and 2q. DAP3 has been shown to interact with FADD; TNFRSF10A; Glucocorticoid receptor and Heat shock protein 90kDa alpha (cytosolic); member A1.

Synonyms:

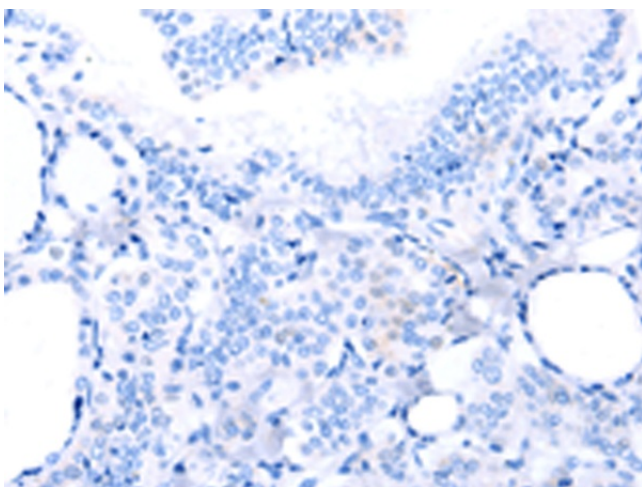
bMRP-10; DAP-3; DKFZp686G12159; MGC126058; MGC126059; MRP-S29; MRPS29; S29mt

Product images:

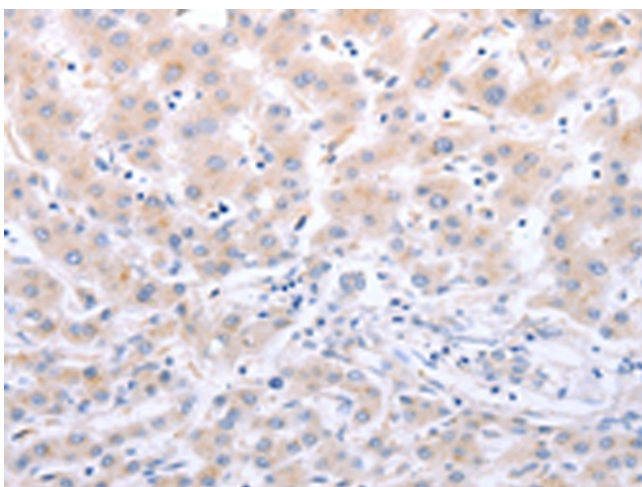
Gel: 10%SDS-PAGE
Lysate: 30 µg
Lane 1-2: Hepg2 cells
Jurkat cells
Primary antibody: [TA324308] (Dap3 Antibody) at dilution 1/450
Secondary antibody: Goat anti rabbit IgG at 1/8000 dilution
Exposure time: 1 minute



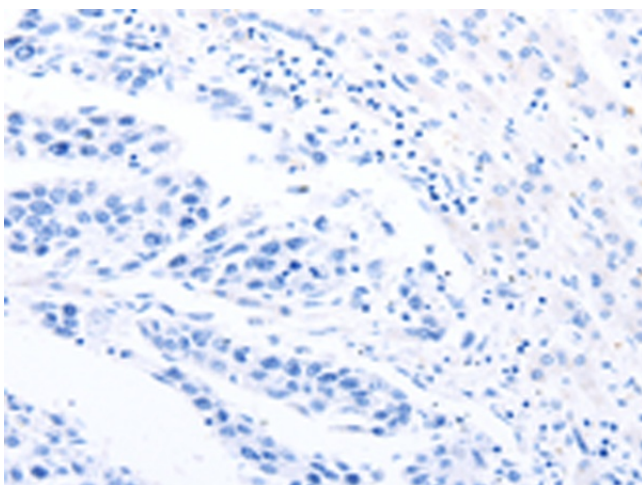
Immunohistochemistry of paraffin-embedded Human thyroid cancer tissue using [TA324308] (Dap3 Antibody) at dilution 1/20 (Original magnification: ×200)



Immunohistochemistry of paraffin-embedded Human thyroid cancer tissue using [TA324308] (Dap3 Antibody) at dilution 1/20, treated with synthetic peptide. (Original magnification: x200)



Immunohistochemistry of paraffin-embedded Human liver cancer tissue using [TA324308] (Dap3 Antibody) at dilution 1/20 (Original magnification: x200)



Immunohistochemistry of paraffin-embedded Human liver cancer tissue using [TA324308] (Dap3 Antibody) at dilution 1/20, treated with synthetic peptide. (Original magnification: x200)