

## Product datasheet for **TA324306**

### Ccl6 Rabbit Polyclonal Antibody

#### Product data:

Product Type:	Primary Antibodies
Applications:	IHC
Recommended Dilution:	IHC: 25-100 Positive control: Human breast cancer Predicted cell location: Cytoplasm
Reactivity:	Human, Mouse
Host:	Rabbit
Isotype:	IgG
Clonality:	Polyclonal
Immunogen:	Synthetic peptide corresponding to a region derived from 100-116 amino acids of Mouse chemokine (C-C motif) ligand 6
Formulation:	PBS pH7.3, 0.05% NaN <sub>3</sub> , 50% glycerol
Concentration:	lot specific
Purification:	Antigen affinity purification
Conjugation:	Unconjugated
Storage:	Store at -20°C as received.
Stability:	Stable for 12 months from date of receipt.
Gene Name:	chemokine (C-C motif) ligand 6
Database Link:	<a href="#">NP_033165</a> <a href="#">Entrez Gene 20305 Mouse</a> <a href="#">P27784</a>



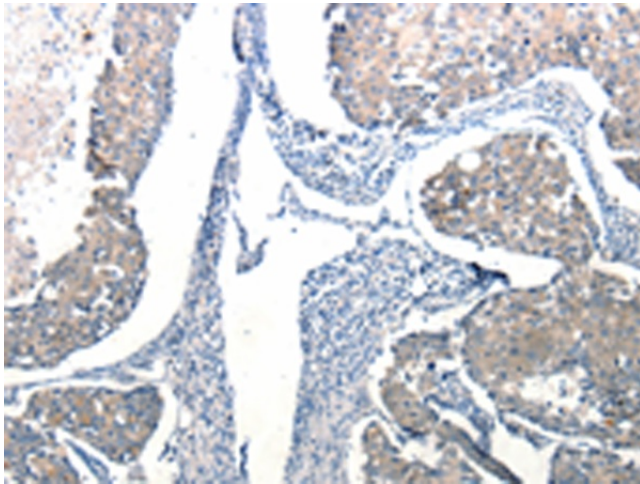
[View online »](#)

**Background:**

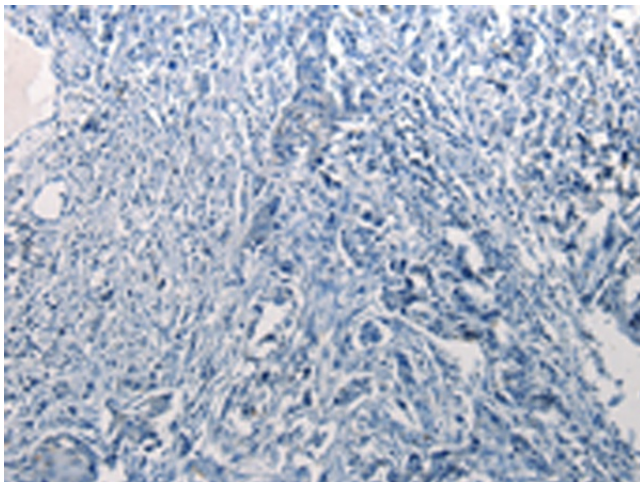
In mice; CCL6 is expressed in cells from neutrophil and macrophage lineages; and can be greatly induced under conditions suitable for myeloid cell differentiation. It is highly expressed in bone marrow cultures that have been stimulated with the cytokine GM-CSF. Some low levels of gene expression also occur in certain cell lines of myeloid origin (e.g. the immature myeloid cell lines DA3 and 32D cl3; and the macrophage cell line P388D) that can also be greatly induced in culture with GM-CSF. However; in activated T cell lines; expression of CCL6 is greatly reduced. CCL6 can also be induced in the mouse lung by the cytokine interleukin 13

**Synonyms:**

c10; MRP-1; Mrp-1; Scay6; Scya6

**Product images:**

Immunohistochemistry of paraffin-embedded Human breast cancer tissue using TA324306 (Ccl6 Antibody) at dilution 1/50 (Original magnification: ×200)



Immunohistochemistry of paraffin-embedded Human breast cancer tissue using TA324306 (Ccl6 Antibody) at dilution 1/50, treated with synthetic peptide. (Original magnification: ×200)