

## Product datasheet for **TA324303S**

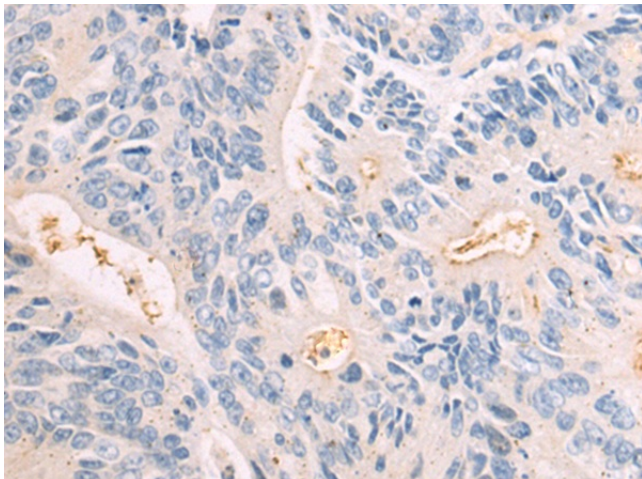
### **MUC5B Rabbit Polyclonal Antibody**

#### **Product data:**

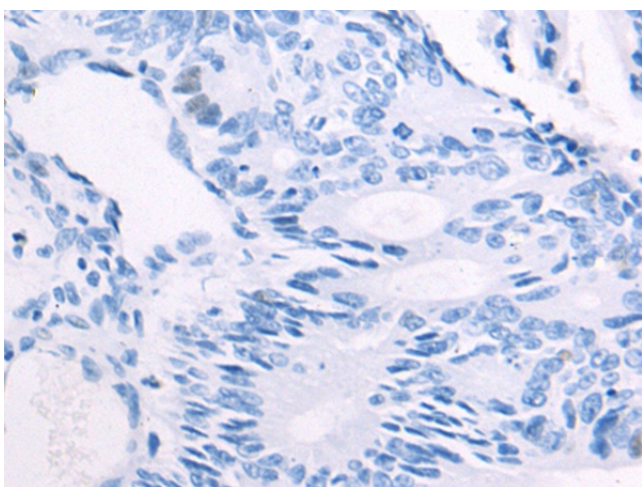
<b>Product Type:</b>	Primary Antibodies
<b>Applications:</b>	IHC
<b>Recommended Dilution:</b>	IHC: 50-200 Positive control: Human colorectal cancer Predicted cell location: Secreted
<b>Reactivity:</b>	Human
<b>Host:</b>	Rabbit
<b>Isotype:</b>	IgG
<b>Clonality:</b>	Polyclonal
<b>Immunogen:</b>	Synthetic peptide corresponding to a region derived from 5750-5762 amino acids of human mucin 5B, oligomeric mucus/gel-forming
<b>Formulation:</b>	PBS pH7.3, 0.05% NaN <sub>3</sub> , 50% glycerol
<b>Purification:</b>	Antigen affinity purification
<b>Conjugation:</b>	Unconjugated
<b>Storage:</b>	Store at -20°C as received.
<b>Stability:</b>	Stable for 12 months from date of receipt.
<b>Gene Name:</b>	mucin 5B, oligomeric mucus/gel-forming
<b>Database Link:</b>	<a href="#">NP_002449</a> <a href="#">Entrez Gene 727897 Human</a> <a href="#">Q9HC84</a>
<b>Background:</b>	This gene encodes a member of the mucin family of proteins; which are highly glycosylated macromolecular components of mucus secretions. This family member is the major gel-forming mucin in mucus. It is a major contributor to the lubricating and viscoelastic properties of whole saliva; normal lung mucus and cervical mucus. This gene has been found to be up-regulated in some human diseases; including sinus mucosa of chronic rhinosinusitis (CRS); CRS with nasal polyposis; chronic obstructive pulmonary disease (COPD) and H. pylori-associated gastric disease; and it may be involved in the pathogenesis of these diseases.
<b>Synonyms:</b>	MG1; MUC-5B; MUC5; MUC9



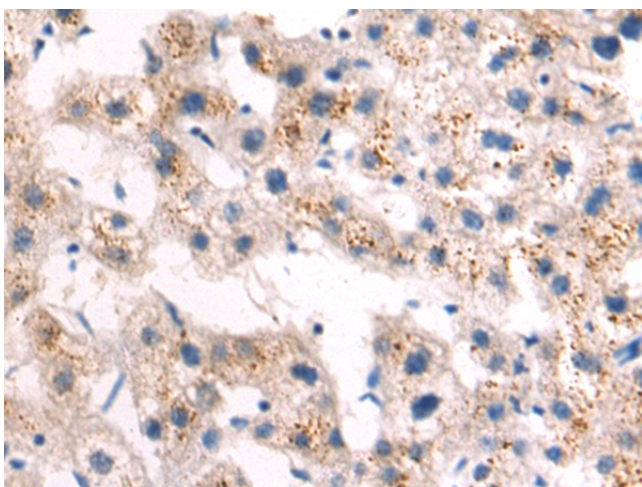
[View online »](#)

**Product images:**

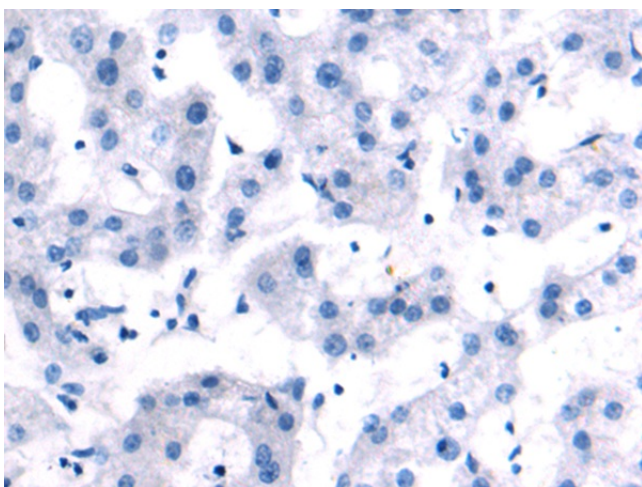
Immunohistochemistry of paraffin-embedded Human colorectal cancer tissue using [TA324303] (MUC5B Antibody) at dilution 1/50 (Original magnification: ×200)



Immunohistochemistry of paraffin-embedded Human colorectal cancer tissue using [TA324303] (MUC5B Antibody) at dilution 1/50, treated with synthetic peptide. (Original magnification: ×200)



Immunohistochemistry of paraffin-embedded Human liver cancer tissue using [TA324303] (MUC5B Antibody) at dilution 1/50 (Original magnification:  $\times 200$ )



Immunohistochemistry of paraffin-embedded Human liver cancer tissue using [TA324303] (MUC5B Antibody) at dilution 1/50, treated with synthetic peptide. (Original magnification:  $\times 200$ )