

Product datasheet for **TA324302**

MCM7 Rabbit Polyclonal Antibody

Product data:

Product Type:	Primary Antibodies
Applications:	IHC, WB
Recommended Dilution:	WB: 500-2000 WB positive control: Jurkat cells IHC: 15-50 Positive control: Human ovarian cancer Predicted cell location: Cytoplasm, Nucleus
Reactivity:	Human, Mouse
Host:	Rabbit
Isotype:	IgG
Clonality:	Polyclonal
Immunogen:	Fusion protein corresponding to a C terminal 300 amino acids of human minichromosome maintenance complex component 7
Formulation:	PBS pH7.3, 0.05% NaN ₃ , 50% glycerol
Concentration:	lot specific
Purification:	Antigen affinity purification
Conjugation:	Unconjugated
Storage:	Store at -20°C as received.
Stability:	Stable for 12 months from date of receipt.
Predicted Protein Size:	81 kDa
Gene Name:	minichromosome maintenance complex component 7
Database Link:	NP_001265524 Entrez Gene 17220 Mouse Entrez Gene 4176 Human P33993



[View online »](#)

Background:

The protein encoded by this gene is one of the highly conserved mini-chromosome maintenance proteins (MCM) that are essential for the initiation of eukaryotic genome replication. The hexameric protein complex formed by the MCM proteins is a key component of the pre-replication complex (pre_RC) and may be involved in the formation of replication forks and in the recruitment of other DNA replication related proteins. The MCM complex consisting of this protein and MCM2, 4 and 6 proteins possesses DNA helicase activity; and may act as a DNA unwinding enzyme. Cyclin D1-dependent kinase; CDK4; is found to associate with this protein; and may regulate the binding of this protein with the tumorsuppressor protein RB1/RB. Alternatively spliced transcript variants encoding distinct isoforms have been reported.

Synonyms:

CDC47; MCM2; P1.1-MCM3; P1CDC47; P85MCM; PNAS146; PPP1R104

Protein Families:

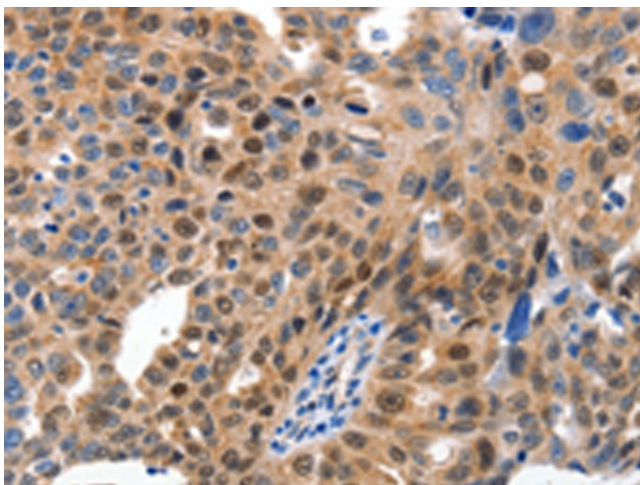
Transcription Factors

Protein Pathways:

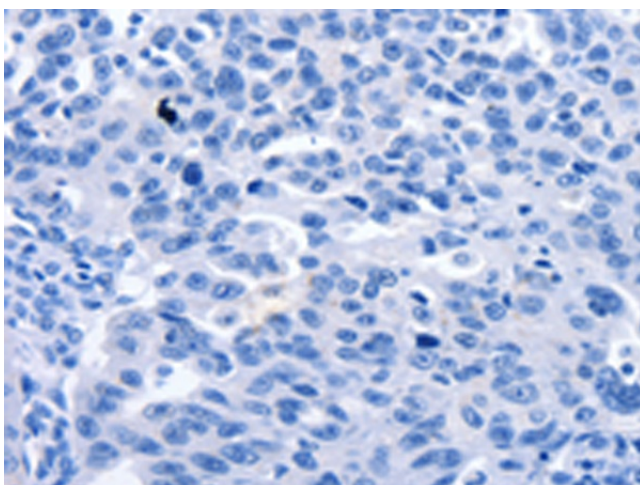
Cell cycle, DNA replication

Product images:

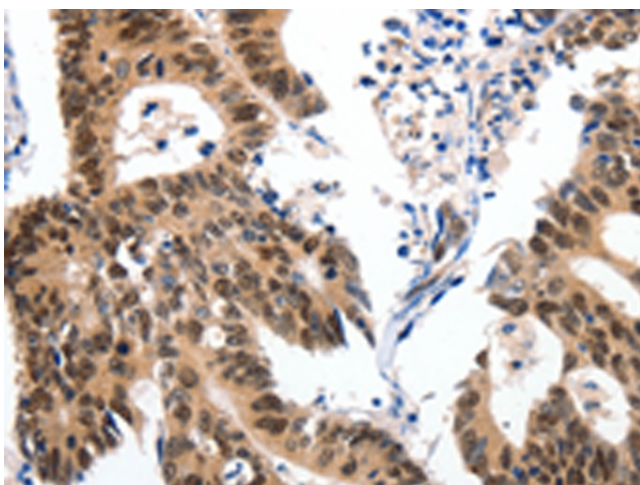
Gel: 10%SDS-PAGE
Lysate: 50 µg
Lane: Jurkat cells
Primary antibody: TA324302 (MCM7 Antibody) at dilution 1/300
Secondary antibody: Goat anti rabbit IgG at 1/8000 dilution
Exposure time: 30 seconds



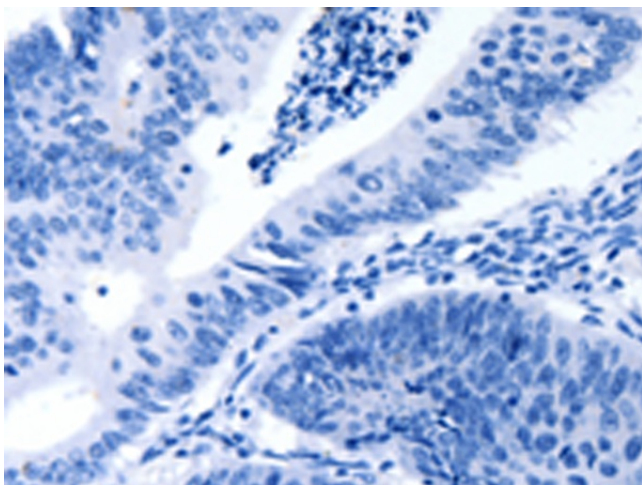
Immunohistochemistry of paraffin-embedded Human ovarian cancer tissue using TA324302 (MCM7 Antibody) at dilution 1/15 (Original magnification: x200)



Immunohistochemistry of paraffin-embedded Human ovarian cancer tissue using TA324302 (MCM7 Antibody) at dilution 1/15, treated with fusion protein. (Original magnification: x200)



Immunohistochemistry of paraffin-embedded Human colon cancer tissue using TA324302 (MCM7 Antibody) at dilution 1/15 (Original magnification: x200)



Immunohistochemistry of paraffin-embedded Human colon cancer tissue using TA324302 (MCM7 Antibody) at dilution 1/15, treated with fusion protein. (Original magnification: ×200)