

Product datasheet for **TA324301**

ALDH6A1 Rabbit Polyclonal Antibody

Product data:

Product Type:	Primary Antibodies
Applications:	IHC, WB
Recommended Dilution:	WB: 200-1000 WB positive control: Rat kidney and human fetal kidney tissue, Jurkat and K562 cells IHC: 50-200 Positive control: Human breast cancer Predicted cell location: Cytoplasm
Reactivity:	Human, Mouse, Rat
Host:	Rabbit
Isotype:	IgG
Clonality:	Polyclonal
Immunogen:	Fusion protein corresponding to C terminal 250 amino acids of human aldehyde dehydrogenase 6 family, member A1
Formulation:	PBS pH7.3, 0.05% NaN ₃ , 50% glycerol
Concentration:	lot specific
Purification:	Antigen affinity purification
Conjugation:	Unconjugated
Storage:	Store at -20°C as received.
Stability:	Stable for 12 months from date of receipt.
Predicted Protein Size:	58 kDa
Gene Name:	aldehyde dehydrogenase 6 family member A1
Database Link:	NP_001265522 Entrez Gene 81708 Rat Entrez Gene 104776 Mouse Entrez Gene 4329 Human Q02252



[View online »](#)

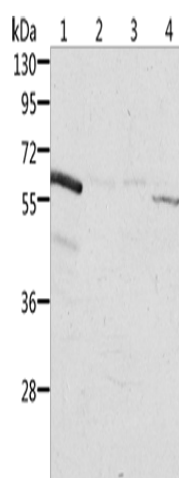
Background: This protein belongs to the aldehyde dehydrogenases family of proteins. This enzyme plays a role in the valine and pyrimidine catabolic pathways. The product of this gene, a mitochondrial methylmalonate semialdehyde dehydrogenase, catalyzes the irreversible oxidative decarboxylation of malonate and methylmalonate semialdehydes to acetyl- and propionyl-CoA. Methylmalonate semialdehyde dehydrogenase deficiency is characterized by elevated beta-alanine, 3-hydroxypropionic acid, and both isomers of 3-amino and 3-hydroxyisobutyric acids in urine organic acids.

Synonyms: MMSADHA; MMSDH

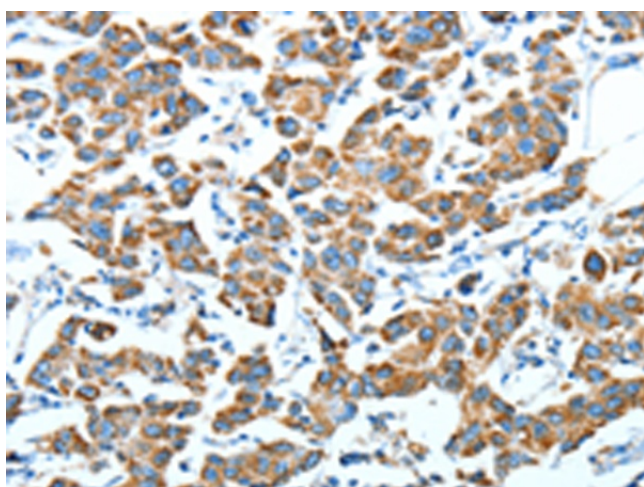
Protein Families: Druggable Genome, Transmembrane

Protein Pathways: Inositol phosphate metabolism, Metabolic pathways, Propanoate metabolism, Valine, leucine and isoleucine degradation

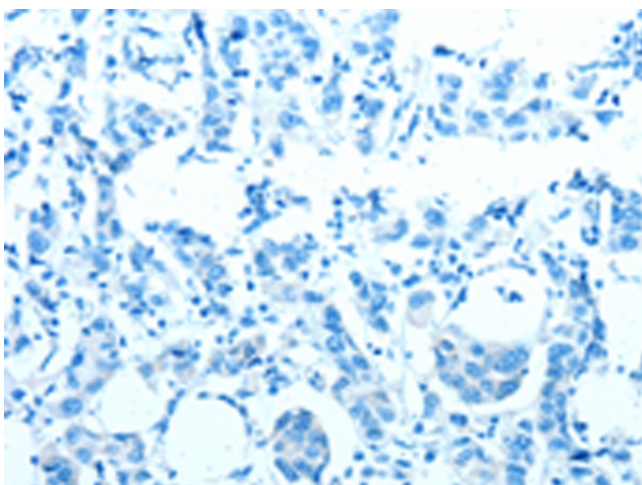
Product images:



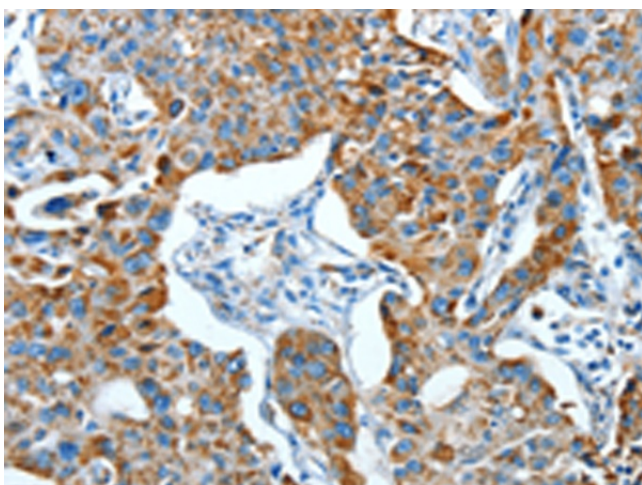
Gel: 10%SDS-PAGE
Lysate: 40 µg
Lane 1-4: Rat kidney tissue
human fetal kidney tissue
Jurkat cells
K562 cells
Primary antibody: TA324301 (ALDH6A1 Antibody)
at dilution 1/450
Secondary antibody: Goat anti rabbit IgG at
1/8000 dilution
Exposure time: 20 seconds



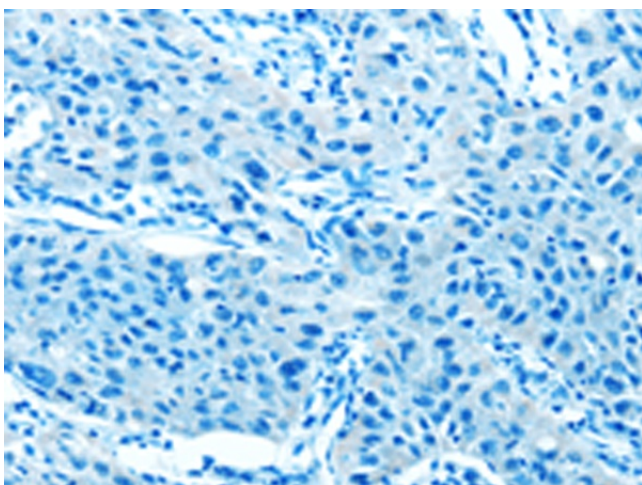
Immunohistochemistry of paraffin-embedded
Human breast cancer tissue using TA324301
(ALDH6A1 Antibody) at dilution 1/45 (Original
magnification: ×200)



Immunohistochemistry of paraffin-embedded Human breast cancer tissue using TA324301 (ALDH6A1 Antibody) at dilution 1/45, treated with fusion protein. (Original magnification: ×200)



Immunohistochemistry of paraffin-embedded Human lung cancer tissue using TA324301 (ALDH6A1 Antibody) at dilution 1/45 (Original magnification: ×200)



Immunohistochemistry of paraffin-embedded Human lung cancer tissue using TA324301 (ALDH6A1 Antibody) at dilution 1/45, treated with fusion protein. (Original magnification: ×200)