

## Product datasheet for **TA324299S**

### Activin Receptor Type IIA (ACVR2A) Rabbit Polyclonal Antibody

#### Product data:

Product Type:	Primary Antibodies
Applications:	WB
Recommended Dilution:	WB: 500-2000 WB positive control: Hela cells
Reactivity:	Human, Mouse, Rat
Host:	Rabbit
Isotype:	IgG
Clonality:	Polyclonal
Immunogen:	Fusion protein corresponding to a region derived from 195-485 amino acids of human activin A receptor, type IIA
Formulation:	PBS pH7.3, 0.05% NaN <sub>3</sub> , 50% glycerol
Purification:	Antigen affinity purification
Conjugation:	Unconjugated
Storage:	Store at -20°C as received.
Stability:	Stable for 12 months from date of receipt.
Predicted Protein Size:	58 kDa
Gene Name:	activin A receptor type 2A
Database Link:	<a href="#">NP_001265508</a> <a href="#">Entrez Gene 11480 Mouse</a> <a href="#">Entrez Gene 29263 Rat</a> <a href="#">Entrez Gene 92 Human</a> <a href="#">P27037</a>



[View online »](#)

**Background:**

This gene encodes activin A type II receptor. Activins are dimeric growth and differentiation factors which belong to the transforming growth factor-beta (TGF-beta) superfamily of structurally related signaling proteins. Activins signal through a heteromeric complex of receptor serine kinases which include at least two type I (I and IB) and two type II (II and IIB) receptors. These receptors are all transmembrane proteins; composed of a ligand-binding extracellular domain with cysteine-rich region; a transmembrane domain; and a cytoplasmic domain with predicted serine/threonine specificity. Type I receptors are essential for signaling; and type II receptors are required for binding ligands and for expression of type I receptors. Type I and II receptors form a stable complex after ligand binding; resulting in phosphorylation of type I receptors by type II receptors. Type II receptors are considered to be constitutively active kinases.

**Synonyms:**

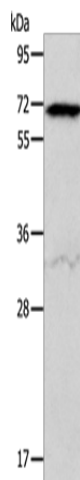
ACTRII; ACVR2

**Protein Families:**

Druggable Genome, Protein Kinase, Transmembrane

**Protein Pathways:**

Cytokine-cytokine receptor interaction, TGF-beta signaling pathway

**Product images:**

Gel: 10%SDS-PAGE  
Lysate: 40 µg  
Lane: HeLa cells  
Primary antibody: [TA324299] (ACVR2A Antibody) at dilution 1/400  
Secondary antibody: Goat anti rabbit IgG at 1/8000 dilution  
Exposure time: 10 seconds