

Product datasheet for **TA324299**

Activin Receptor Type IIA (ACVR2A) Rabbit Polyclonal Antibody

Product data:

Product Type:	Primary Antibodies
Applications:	WB
Recommended Dilution:	WB: 500-2000 WB positive control: Hela cells
Reactivity:	Human, Mouse, Rat
Host:	Rabbit
Isotype:	IgG
Clonality:	Polyclonal
Immunogen:	Fusion protein corresponding to a region derived from 195-485 amino acids of human activin A receptor, type IIA
Formulation:	PBS pH7.3, 0.05% NaN ₃ , 50% glycerol
Concentration:	lot specific
Purification:	Antigen affinity purification
Conjugation:	Unconjugated
Storage:	Store at -20°C as received.
Stability:	Stable for 12 months from date of receipt.
Predicted Protein Size:	58 kDa
Gene Name:	activin A receptor type 2A
Database Link:	NP_001265508 Entrez Gene 11480 Mouse Entrez Gene 29263 Rat Entrez Gene 92 Human P27037



[View online »](#)

Background:

This gene encodes activin A type II receptor. Activins are dimeric growth and differentiation factors which belong to the transforming growth factor-beta (TGF-beta) superfamily of structurally related signaling proteins. Activins signal through a heteromeric complex of receptor serine kinases which include at least two type I (I and IB) and two type II (II and IIB) receptors. These receptors are all transmembrane proteins; composed of a ligand-binding extracellular domain with cysteine-rich region; a transmembrane domain; and a cytoplasmic domain with predicted serine/threonine specificity. Type I receptors are essential for signaling; and type II receptors are required for binding ligands and for expression of type I receptors. Type I and II receptors form a stable complex after ligand binding; resulting in phosphorylation of type I receptors by type II receptors. Type II receptors are considered to be constitutively active kinases.

Synonyms:

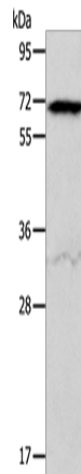
ACTRII; ACVR2

Protein Families:

Druggable Genome, Protein Kinase, Transmembrane

Protein Pathways:

Cytokine-cytokine receptor interaction, TGF-beta signaling pathway

Product images:

Gel: 10%SDS-PAGE
Lysate: 40 µg
Lane: HeLa cells
Primary antibody: TA324299 (ACVR2A Antibody)
at dilution 1/400
Secondary antibody: Goat anti rabbit IgG at
1/8000 dilution
Exposure time: 10 seconds