

## Product datasheet for **TA324298S**

### alpha Tubulin (TUBA4A) Rabbit Polyclonal Antibody

#### Product data:

Product Type:	Primary Antibodies
Applications:	IHC, WB
Recommended Dilution:	WB: 500-2000 WB positive control: A431□Hela and K562 cell lysates IHC: 30-150 Positive control: Human thyroid cancer Predicted cell location: Cytoplasm
Reactivity:	Human, Mouse, Rat
Host:	Rabbit
Isotype:	IgG
Clonality:	Polyclonal
Immunogen:	Fusion protein corresponding to a region derived from 127-447 amino acids of Human Tubulin alpha-4A chain
Formulation:	PBS pH7.3, 0.05% NaN <sub>3</sub> , 50% glycerol
Purification:	Antigen affinity purification
Conjugation:	Unconjugated
Storage:	Store at -20°C as received.
Stability:	Stable for 12 months from date of receipt.
Predicted Protein Size:	50 kDa
Gene Name:	tubulin alpha 4a
Database Link:	<a href="#">NP_001265481</a> <a href="#">Entrez Gene 22145 Mouse</a> <a href="#">Entrez Gene 316531 Rat</a> <a href="#">Entrez Gene 7277 Human</a> <a href="#">P68366</a>



[View online »](#)

**Background:**

Microtubules of the eukaryotic cytoskeleton perform essential and diverse functions and are composed of a heterodimer of alpha and beta tubulin. The genes encoding these microtubule constituents are part of the tubulin superfamily; which is composed of six distinct families. Genes from the alpha; beta and gamma tubulin families are found in all eukaryotes. The alpha and beta tubulins represent the major components of microtubules; while gamma tubulin plays a critical role in the nucleation of microtubule assembly. There are multiple alpha and beta tubulin genes and they are highly conserved among and between species. This gene encodes an alpha tubulin that is a highly conserved homolog of a rat testis-specific alpha tubulin.

**Synonyms:**

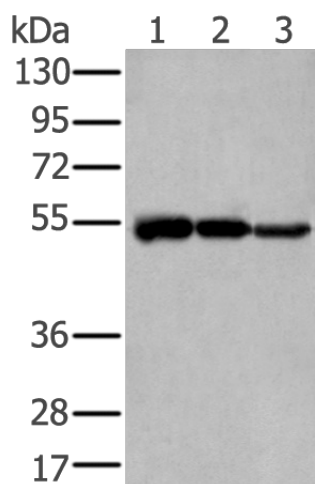
ALS22; H2-ALPHA; TUBA1

**Protein Families:**

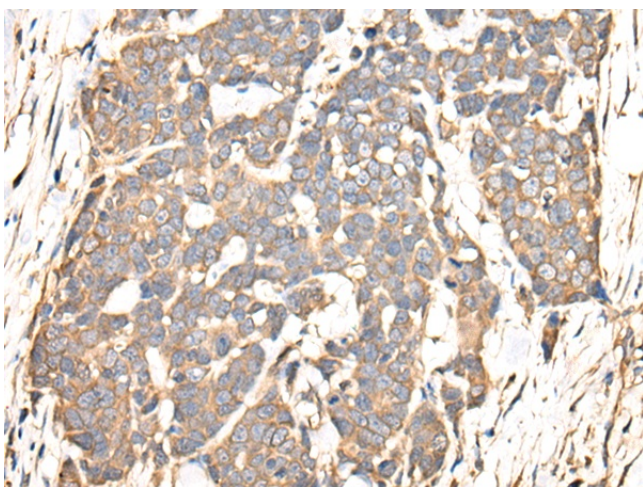
Druggable Genome

**Protein Pathways:**

Gap junction, Pathogenic Escherichia coli infection

**Product images:**

Gel: 8%SDS-PAGE  
Lysate: 40 µg  
Lane 1-3: A431  
Hela and K562 cell lysates  
Primary antibody: [TA324298] (TUBA4A Antibody)  
at dilution 1/400  
Secondary antibody: Goat anti rabbit IgG at  
1/8000 dilution  
Exposure time: 10 seconds



Immunohistochemistry of paraffin-embedded  
Human thyroid cancer tissue using [TA324298]  
(TUBA4A Antibody) at dilution 1/40. (Original  
magnification: ×200)