

## Product datasheet for **TA324293**

### DIABLO Rabbit Polyclonal Antibody

#### Product data:

Product Type:	Primary Antibodies
Applications:	IHC, WB
Recommended Dilution:	WB: 1000-5000 WB positive control: Lncap, SKOV3, MCF7 and 293T cells IHC: 100-300 Positive control: Human thyroid cancer Predicted cell location: Cytoplasm
Reactivity:	Human, Mouse
Host:	Rabbit
Isotype:	IgG
Clonality:	Polyclonal
Immunogen:	Fusion protein corresponding to a region derived from 56-239 amino acids of human diablo, IAP-binding mitochondrial protein
Formulation:	PBS pH7.3, 0.05% NaN <sub>3</sub> , 50% glycerol
Concentration:	lot specific
Purification:	Antigen affinity purification
Conjugation:	Unconjugated
Storage:	Store at -20°C as received.
Stability:	Stable for 12 months from date of receipt.
Predicted Protein Size:	27 kDa
Gene Name:	diablo IAP-binding mitochondrial protein
Database Link:	<a href="#">NP_001265231</a> <a href="#">Entrez Gene 66593 Mouse</a> <a href="#">Entrez Gene 56616 Human</a> <a href="#">Q9NR28</a>



[View online »](#)

**Background:**

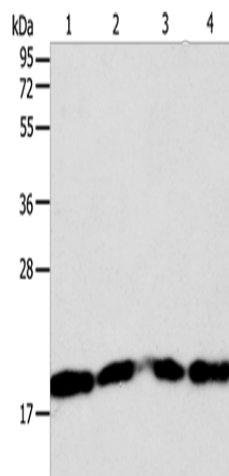
This gene encodes an inhibitor of apoptosis protein (IAP)-binding protein. The encoded mitochondrial protein enters the cytosol when cells undergo apoptosis; and it moderates the caspase inhibition of IAPs. Multiple polyadenylation sites have been found for this gene. Four alternatively spliced transcript variants have been described for this gene; with two of them encoding different isoforms and the other two probably not encoding a protein. Ubiquitously expressed with highest expression in testis. Expression is also high in heart; liver; kidney; spleen; prostate and ovary. Low in brain; lung; thymus and peripheral blood leukocytes. Isoform 3 is ubiquitously expressed.

**Synonyms:**

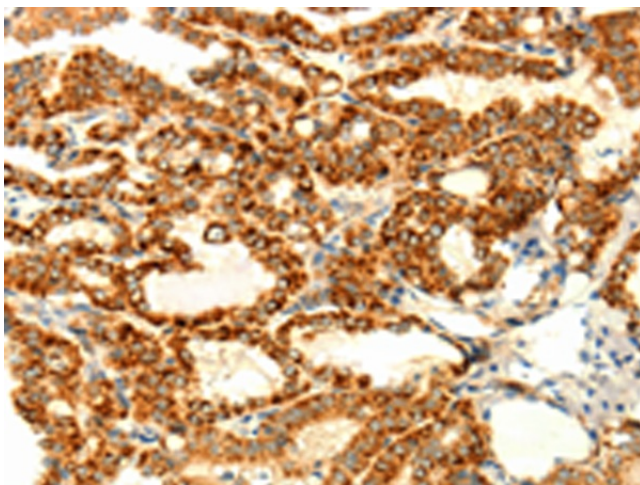
DFNA64; SMAC

**Protein Families:**

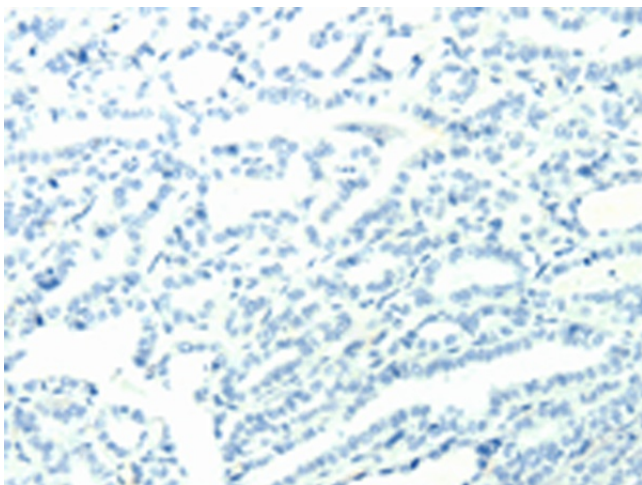
Transmembrane

**Product images:**


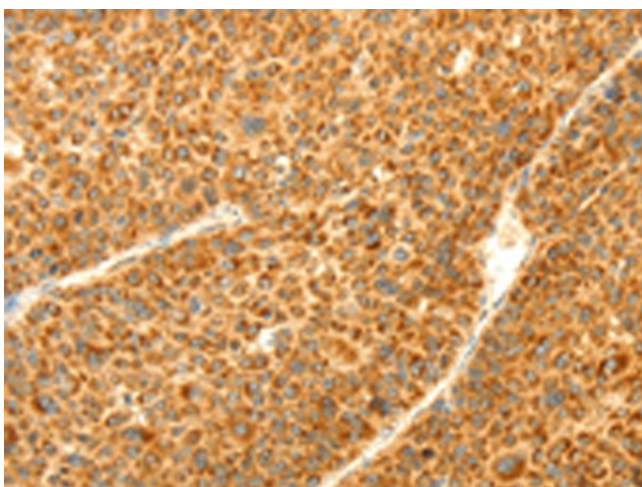
Gel: 12%SDS-PAGE  
 Lysate: 40 µg  
 Lane 1-4: Lncap cells  
 SKOV3 cells  
 MCF7 cells  
 293T cells  
 Primary antibody: TA324293 (DIABLO Antibody)  
 at dilution 1/1000  
 Secondary antibody: Goat anti rabbit IgG at  
 1/8000 dilution  
 Exposure time: 1 second



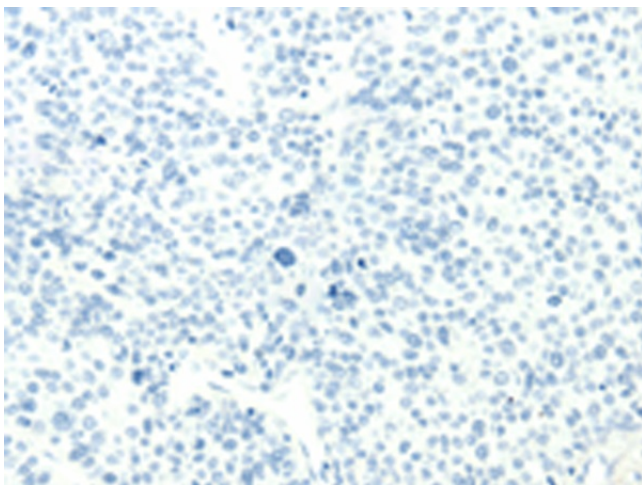
Immunohistochemistry of paraffin-embedded Human thyroid cancer tissue using TA324293 (DIABLO Antibody) at dilution 1/70 (Original magnification: ×200)



Immunohistochemistry of paraffin-embedded Human thyroid cancer tissue using TA324293 (DIABLO Antibody) at dilution 1/70, treated with fusion protein. (Original magnification:  $\times 200$ )



Immunohistochemistry of paraffin-embedded Human liver cancer tissue using TA324293 (DIABLO Antibody) at dilution 1/70 (Original magnification:  $\times 200$ )



Immunohistochemistry of paraffin-embedded Human liver cancer tissue using TA324293 (DIABLO Antibody) at dilution 1/70, treated with fusion protein. (Original magnification:  $\times 200$ )