

Product datasheet for **TA324290**

E2F6 Rabbit Polyclonal Antibody

Product data:

Product Type:	Primary Antibodies
Applications:	IHC, WB
Recommended Dilution:	ELISA: 1:1000-2000, WB: 1:200-1000
Reactivity:	Human, Mouse, Rat
Host:	Rabbit
Isotype:	IgG
Clonality:	Polyclonal
Immunogen:	Full length fusion protein
Formulation:	PBS pH7.3, 0.05% NaN ₃ , 50% glycerol
Concentration:	lot specific
Purification:	Antigen affinity purification
Conjugation:	Unconjugated
Storage:	Store at -20°C as received.
Stability:	Stable for 12 months from date of receipt.
Predicted Protein Size:	32 kDa
Gene Name:	E2F transcription factor 6
Database Link:	NP_001265204 Entrez Gene 50496 MouseEntrez Gene 313978 RatEntrez Gene 1876 Human O75461



[View online »](#)

Background:

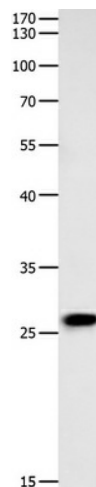
This gene encodes a member of the E2F transcription factor protein family. E2F family members play a crucial role in control of the cell cycle and of the action of tumor suppressor proteins. They are also a target of the transforming proteins of small DNA tumor viruses. Many E2F proteins contain several evolutionarily conserved domains: a DNA binding domain; a dimerization domain which determines interaction with the differentiation regulated transcription factor proteins (DP); a transactivation domain enriched in acidic amino acids; and a tumor suppressor protein association domain which is embedded within the transactivation domain. The encoded protein of this gene is atypical because it lacks the transactivation and tumor suppressor protein association domains. It contains a modular suppression domain and is an inhibitor of E2F-dependent transcription. The protein is part of a multimeric protein complex that contains a histone methyltransferase and the transcription factors Mga and Max. Multiple transcript variants have been reported for this gene; but it has not been clearly demonstrated that they encode valid isoforms.

Synonyms:

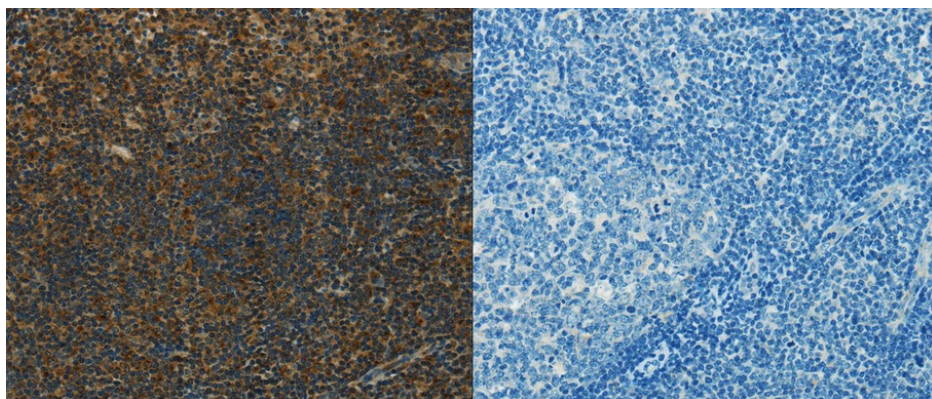
E2F-6

Protein Families:

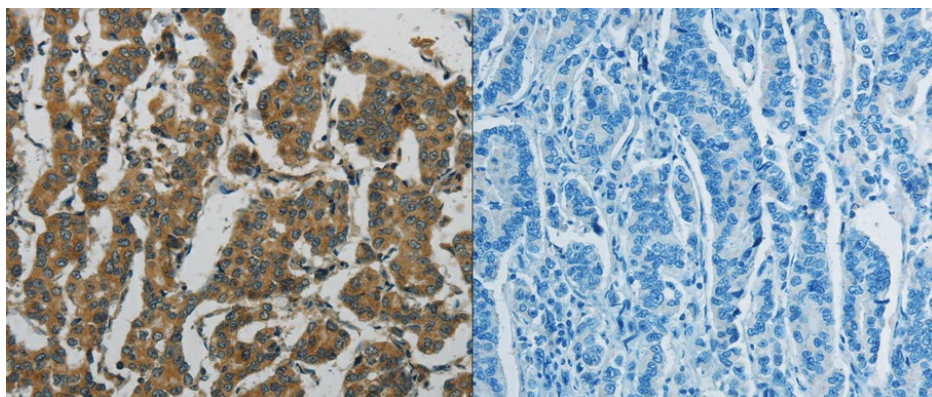
Transcription Factors

Product images:

Western blot analysis of Mouse liver tissue using TA324290 (E2F6 Antibody) at dilution 1/350



Immunohistochemistry of paraffin-embedded Human tonsil tissue using TA324290 (E2F6 Antibody) (left image) at dilution 1/70, the image on the right is treated with the fusion protein. (Original magnification: x200)



Immunohistochemistry of paraffin-embedded Human breast cancer tissue using TA324290 (E2F6 Antibody) (left image) at dilution 1/70, the image on the right is treated with the fusion protein. (Original magnification: x200)