

Product datasheet for **TA324289**

ADAM2 Rabbit Polyclonal Antibody

Product data:

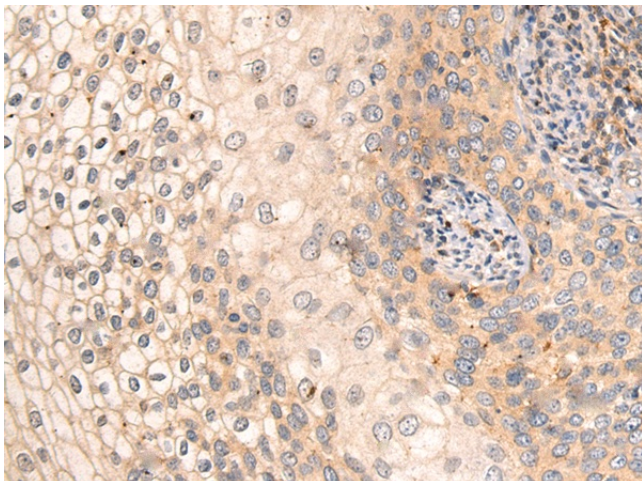
Product Type:	Primary Antibodies
Applications:	IHC
Recommended Dilution:	IHC: 50-100 Positive control: Human cervical cancer Predicted cell location: Cell membrane
Reactivity:	Human
Host:	Rabbit
Isotype:	IgG
Clonality:	Polyclonal
Immunogen:	Fusion protein corresponding to C terminal 250 amino acids of human ADAM metalloproteinase domain 2
Formulation:	PBS pH7.3, 0.05% NaN ₃ , 50% glycerol
Concentration:	lot specific
Purification:	Antigen affinity purification
Conjugation:	Unconjugated
Storage:	Store at -20°C as received.
Stability:	Stable for 12 months from date of receipt.
Gene Name:	ADAM metalloproteinase domain 2
Database Link:	NP_001455 Entrez Gene 2515 Human Q99965
Background:	This gene encodes a member of the ADAM (a disintegrin and metalloprotease domain) family. Members of this family are membrane-anchored proteins structurally related to snake venom disintegrins, and have been implicated in a variety of biological processes involving cell-cell and cell-matrix interactions, including fertilization, muscle development, and neurogenesis. This member is a subunit of an integral sperm membrane glycoprotein called fertilin, which plays an important role in sperm-egg interactions.
Synonyms:	CRYN1; CRYN2; CT15; FTNB; PH-30b; PH30; PH30-beta



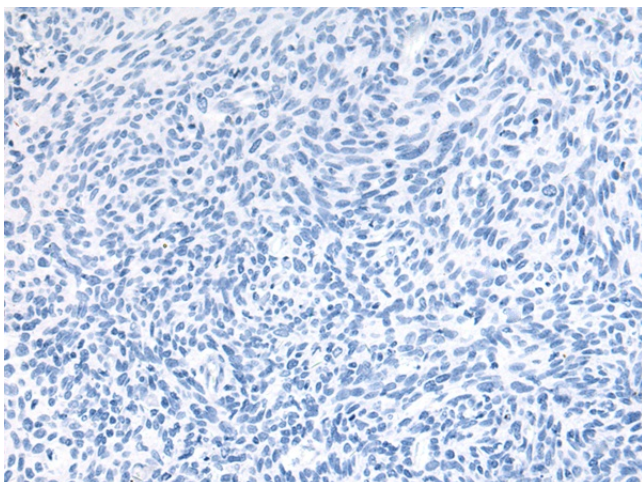
[View online »](#)

Protein Families: Druggable Genome, Protease, Transmembrane

Product images:



Immunohistochemistry of paraffin-embedded Human cervical cancer tissue using TA324289 (ADAM2 Antibody) at dilution 1/60 (Original magnification: $\times 200$)



Immunohistochemistry of paraffin-embedded Human cervical cancer tissue using TA324289 (ADAM2 Antibody) at dilution 1/60, treated with fusion protein. (Original magnification: $\times 200$)