

Product datasheet for **TA324288**

ADAM2 Rabbit Polyclonal Antibody

Product data:

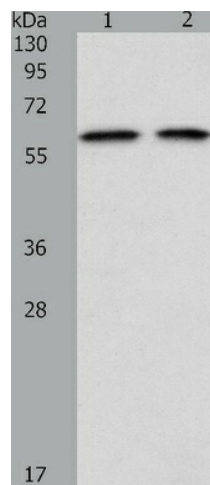
Product Type:	Primary Antibodies
Applications:	IHC, WB
Recommended Dilution:	ELISA: 1:1000-2000, WB: 1:200-1000, IHC: 1:25-100
Reactivity:	Human, Mouse, Rat
Host:	Rabbit
Isotype:	IgG
Clonality:	Polyclonal
Immunogen:	Fusion protein corresponding to C terminal 250 amino acids of human ADAM metalloproteinase domain 2
Formulation:	PBS pH7.3, 0.05% NaN ₃ , 50% glycerol
Concentration:	lot specific
Purification:	Antigen affinity purification
Conjugation:	Unconjugated
Storage:	Store at -20°C as received.
Stability:	Stable for 12 months from date of receipt.
Predicted Protein Size:	64 kDa
Gene Name:	ADAM metalloproteinase domain 2
Database Link:	NP_001455 Entrez Gene 11495 Mouse Entrez Gene 56806 Rat Entrez Gene 2515 Human Q99965
Background:	This gene encodes a member of the ADAM (a disintegrin and metalloprotease domain) family. Members of this family are membrane-anchored proteins structurally related to snake venom disintegrins, and have been implicated in a variety of biological processes involving cell-cell and cell-matrix interactions, including fertilization, muscle development, and neurogenesis. This member is a subunit of an integral sperm membrane glycoprotein called fertilin, which plays an important role in sperm-egg interactions.
Synonyms:	CRYN1; CRYN2; CT15; FTNB; PH-30b; PH30; PH30-beta



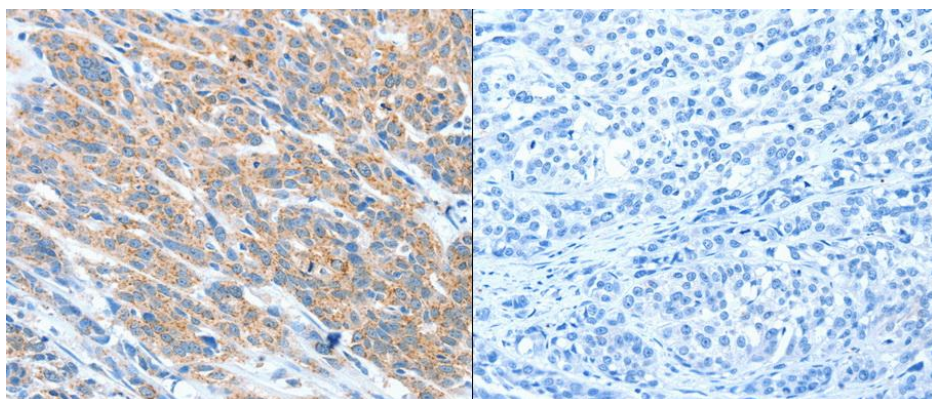
[View online »](#)

Protein Families: Druggable Genome, Protease, Transmembrane

Product images:



Predicted band size: 64 kDa. Positive control: 293T and HeLa cell lysate. Recommended dilution: 1/200-1000. (Gel: 8%SDS-PAGE Lane 1: 293T cell lysate Lane 2: HeLa cell lysate Lysates: 40 ug per lane Primary antibody: 1/300 dilution Secondary antibody: Goat anti Rabbit IgG - H&L (HRP) at 1/10000 dilution Exposure time: 15 seconds)



Predicted cell location: Cytoplasm. Positive control: Human esophagus cancer tissue. Recommended dilution: 1/25-100 The image on the left is immunohistochemistry of paraffin-embedded human esophagus cancer tissue using ADAM2 antibody at dilution 1/20, on the right is treated with the fusion protein. (Original magnification: x200)