

## Product datasheet for **TA324286**

### **TAGLN2 Rabbit Polyclonal Antibody**

#### **Product data:**

Product Type:	Primary Antibodies
Applications:	IHC, WB
Recommended Dilution:	WB: 1000-5000 WB positive control: MCF7 cell, Mouse lung tissue, Hela and A375 cell lysates IHC: 200-400 Positive control: Human ovarian cancer Predicted cell location: Cytoplasm
Reactivity:	Human, Mouse, Rat
Host:	Rabbit
Isotype:	IgG
Clonality:	Polyclonal
Immunogen:	Fusion protein corresponding to a region derived from 24-136 amino acids of human transgelin 2
Formulation:	PBS pH7.3, 0.05% NaN <sub>3</sub> , 50% glycerol
Concentration:	lot specific
Purification:	Antigen affinity purification
Conjugation:	Unconjugated
Storage:	Store at -20°C as received.
Stability:	Stable for 12 months from date of receipt.
Predicted Protein Size:	22 kDa
Gene Name:	transgelin 2
Database Link:	<a href="#">NP_001264152</a> <a href="#">Entrez Gene 21346 Mouse</a> <a href="#">Entrez Gene 304983 Rat</a> <a href="#">Entrez Gene 8407 Human</a> <a href="#">P37802</a>



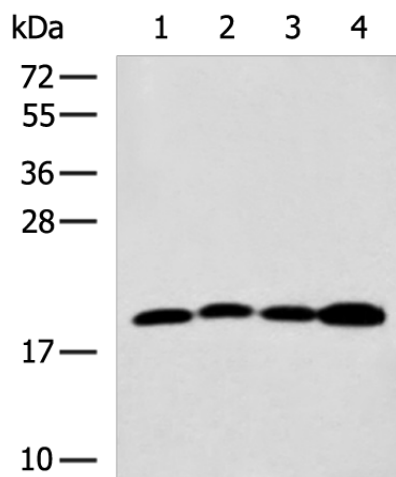
[View online »](#)

**Background:**

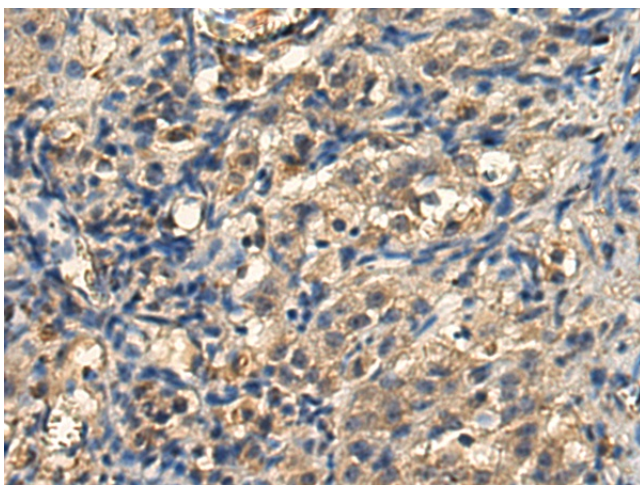
The protein encoded by this gene is a homolog of the protein transgelin, which is one of the earliest markers of differentiated smooth muscle. The function of this protein has not yet been determined. TAGLN2 expression in all 16 human tissues examined, with high expression in lung, liver, kidney, spleen, thymus, small intestine, colon, prostate, testis, ovary, placenta, and peripheral blood leukocytes, lower expression in skeletal muscle, pancreas, and heart, and lowest expression in brain.

**Synonyms:**

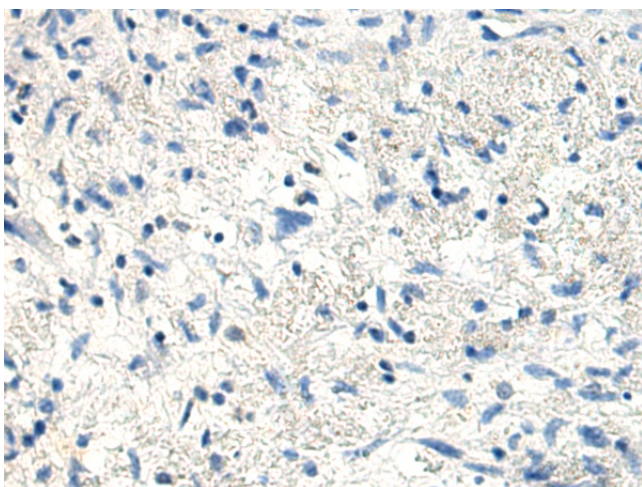
HA1756

**Product images:**

Gel: 12%SDS-PAGE  
Lysate: 40  $\mu$ g  
Lane 1-4: MCF7 cell  
Mouse lung tissue  
Hela and A375 cell lysates  
Primary antibody: TA324286 (TAGLN2 Antibody)  
at dilution 1/1000  
Secondary antibody: Goat anti rabbit IgG at  
1/5000 dilution  
Exposure time: 2 minutes



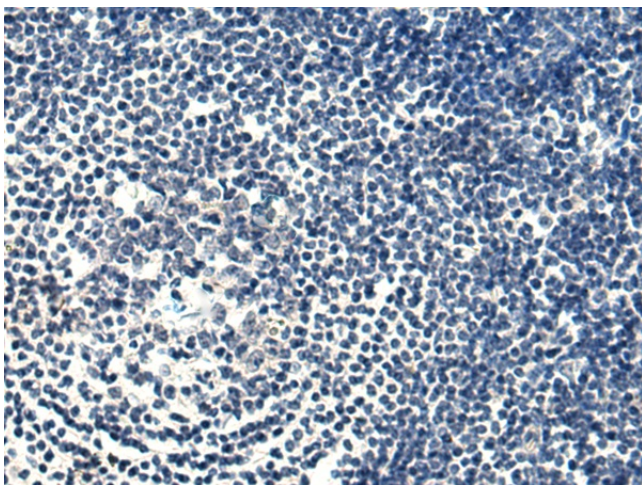
Immunohistochemistry of paraffin-embedded  
Human ovarian cancer tissue using TAGLN2  
(TAGLN2 Antibody) at dilution 1/240 (Original  
magnification:  $\times$ 200)



Immunohistochemistry of paraffin-embedded Human ovarian cancer tissue using TA324286 (TAGLN2 Antibody) at dilution 1/240, treated with fusion protein. (Original magnification:  $\times 200$ )



Immunohistochemistry of paraffin-embedded Human esophagus cancer tissue using TA324286 (TAGLN2 Antibody) at dilution 1/240 (Original magnification:  $\times 200$ )



Immunohistochemistry of paraffin-embedded Human esophagus cancer tissue using TA324286 (TAGLN2 Antibody) at dilution 1/240, treated with fusion protein. (Original magnification:  $\times 200$ )