

## Product datasheet for **TA324282**

### Kallikrein 15 (KLK15) Rabbit Polyclonal Antibody

#### Product data:

Product Type:	Primary Antibodies
Applications:	WB
Recommended Dilution:	WB: 200-1000 WB positive control: Mouse kidney tissue
Reactivity:	Human, Mouse
Host:	Rabbit
Isotype:	IgG
Clonality:	Polyclonal
Immunogen:	Fusion protein corresponding to a region derived from 22-256 amino acids of human kallikrein-related peptidase 15
Formulation:	PBS pH7.3, 0.05% NaN <sub>3</sub> , 50% glycerol
Concentration:	lot specific
Purification:	Antigen affinity purification
Conjugation:	Unconjugated
Storage:	Store at -20°C as received.
Stability:	Stable for 12 months from date of receipt.
Predicted Protein Size:	28 kDa
Gene Name:	kallikrein related peptidase 15
Database Link:	<a href="#">NP_001264010</a> <a href="#">Entrez Gene 317652 Mouse</a> <a href="#">Entrez Gene 55554 Human</a> <a href="#">Q9H2R5</a>
Background:	Kallikreins are a subgroup of serine proteases having diverse physiological functions. Growing evidence suggests that many kallikreins are implicated in carcinogenesis and some have potential as novel cancer and other disease biomarkers. This gene is one of the fifteen kallikrein subfamily members located in a cluster on chromosome 19. In prostate cancer; this gene has increased expression; which indicates its possible use as a diagnostic or prognostic marker for prostate cancer. The gene contains multiple polyadenylation sites and alternative splicing results in multiple transcript variants encoding distinct isoforms.

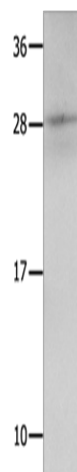


[View online »](#)

Synonyms: ACO; HSRNASPH

Protein Families: Druggable Genome, Protease, Secreted Protein

### Product images:



Gel: 12%SDS-PAGE  
Lysate: 30 µg  
Lane: Mouse kidney tissue  
Primary antibody: TA324282 (KLK15 Antibody) at dilution 1/300  
Secondary antibody: Goat anti rabbit IgG at 1/8000 dilution  
Exposure time: 10 seconds