

## Product datasheet for **TA324279S**

### Hsp75 (TRAP1) Rabbit Polyclonal Antibody

#### Product data:

Product Type:	Primary Antibodies
Applications:	IHC, WB
Recommended Dilution:	WB: 1000-5000 WB positive control: Mouse kidney tissue, 293T and hela cells IHC: 100-200 Positive control: Human liver cancer Predicted cell location: Cytoplasm
Reactivity:	Human, Mouse, Rat
Host:	Rabbit
Isotype:	IgG
Clonality:	Polyclonal
Immunogen:	Fusion protein corresponding to a C terminal 300 amino acids of human TNF receptor-associated protein 1
Formulation:	PBS pH7.3, 0.05% NaN <sub>3</sub> , 50% glycerol
Purification:	Antigen affinity purification
Conjugation:	Unconjugated
Storage:	Store at -20°C as received.
Stability:	Stable for 12 months from date of receipt.
Predicted Protein Size:	80 kDa
Gene Name:	TNF receptor associated protein 1
Database Link:	<a href="#">NP_001258978</a> <a href="#">Entrez Gene 68015 Mouse</a> <a href="#">Entrez Gene 287069 Rat</a> <a href="#">Entrez Gene 10131 Human</a> <a href="#">Q12931</a>



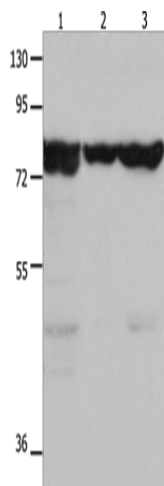
[View online »](#)

**Background:** HSP90 proteins are highly conserved molecular chaperones that have key roles in signal transduction; protein folding; protein degradation; and morphologic evolution. HSP90 proteins normally associate with other cochaperones and play important roles in folding newly synthesized proteins or stabilizing and refolding denatured proteins after stress. TRAP1 is a mitochondrial HSP90 protein. Other HSP90 proteins are found in cytosol and endoplasmic reticulum

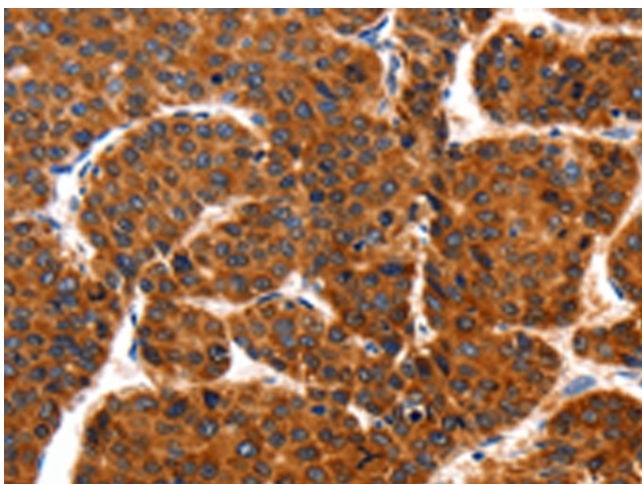
**Synonyms:** HSP 75; HSP75; HSP90L; TRAP-1

**Protein Families:** Druggable Genome

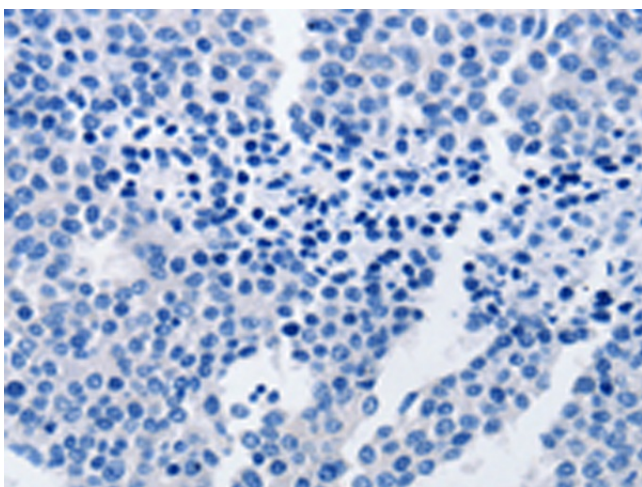
**Product images:**



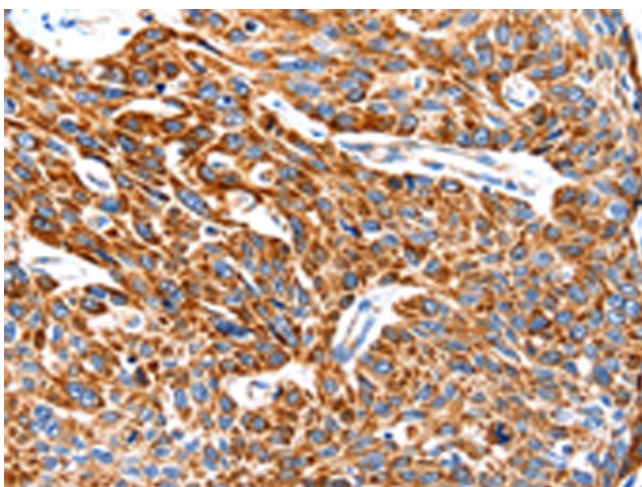
Gel: 10%SDS-PAGE  
Lysate: 30  $\mu$ g  
Lane 1-3: Mouse kidney tissue  
293T cells  
hela cells  
Primary antibody: [TA324279] (TRAP1 Antibody)  
at dilution 1/1500  
Secondary antibody: Goat anti rabbit IgG at  
1/8000 dilution  
Exposure time: 20 seconds



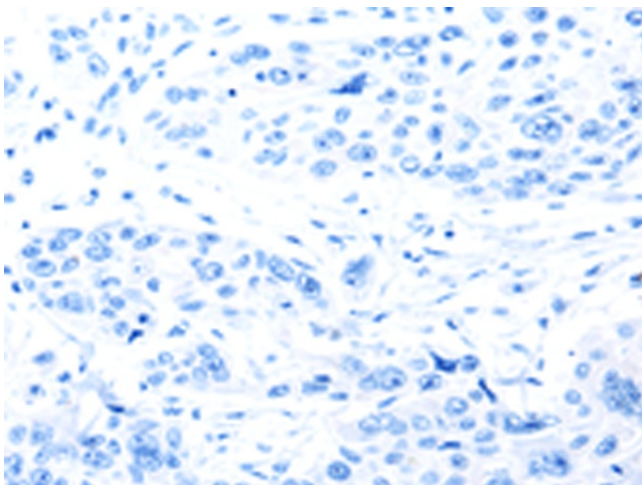
Immunohistochemistry of paraffin-embedded  
Human liver cancer tissue using [TA324279]  
(TRAP1 Antibody) at dilution 1/100 (Original  
magnification:  $\times$ 200)



Immunohistochemistry of paraffin-embedded Human liver cancer tissue using [TA324279] (TRAP1 Antibody) at dilution 1/100, treated with fusion protein. (Original magnification: ×200)



Immunohistochemistry of paraffin-embedded Human esophagus cancer tissue using [TA324279] (TRAP1 Antibody) at dilution 1/100 (Original magnification: ×200)



Immunohistochemistry of paraffin-embedded Human esophagus cancer tissue using [TA324279] (TRAP1 Antibody) at dilution 1/100, treated with fusion protein. (Original magnification: ×200)