

Product datasheet for **TA324279**

Hsp75 (TRAP1) Rabbit Polyclonal Antibody

Product data:

Product Type:	Primary Antibodies
Applications:	IHC, WB
Recommended Dilution:	WB: 1000-5000 WB positive control: Mouse kidney tissue, 293T and hela cells IHC: 100-200 Positive control: Human liver cancer Predicted cell location: Cytoplasm
Reactivity:	Human, Mouse, Rat
Host:	Rabbit
Isotype:	IgG
Clonality:	Polyclonal
Immunogen:	Fusion protein corresponding to a C terminal 300 amino acids of human TNF receptor-associated protein 1
Formulation:	PBS pH7.3, 0.05% NaN ₃ , 50% glycerol
Concentration:	lot specific
Purification:	Antigen affinity purification
Conjugation:	Unconjugated
Storage:	Store at -20°C as received.
Stability:	Stable for 12 months from date of receipt.
Predicted Protein Size:	80 kDa
Gene Name:	TNF receptor associated protein 1
Database Link:	NP_001258978 Entrez Gene 68015 Mouse Entrez Gene 287069 Rat Entrez Gene 10131 Human Q12931



[View online »](#)

Background:

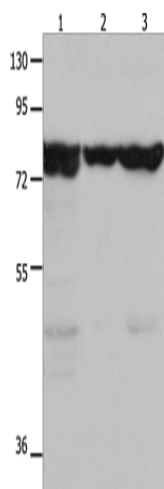
HSP90 proteins are highly conserved molecular chaperones that have key roles in signal transduction; protein folding; protein degradation; and morphologic evolution. HSP90 proteins normally associate with other cochaperones and play important roles in folding newly synthesized proteins or stabilizing and refolding denatured proteins after stress. TRAP1 is a mitochondrial HSP90 protein. Other HSP90 proteins are found in cytosol and endoplasmic reticulum

Synonyms:

HSP 75; HSP75; HSP90L; TRAP-1

Protein Families:

Druggable Genome

Product images:

Gel: 10%SDS-PAGE

Lysate: 30 μ g

Lane 1-3: Mouse kidney tissue

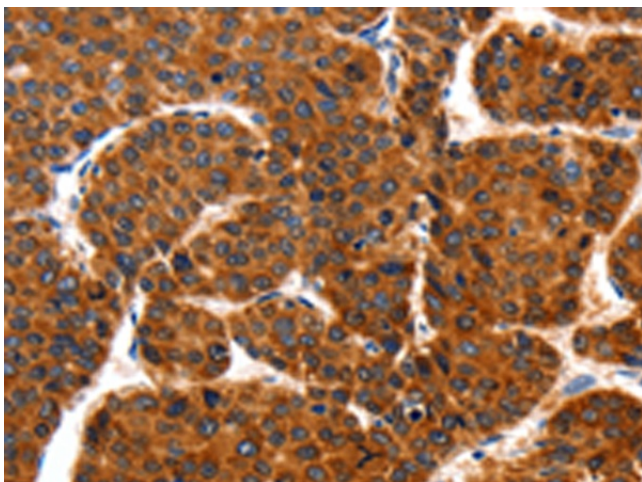
293T cells

hela cells

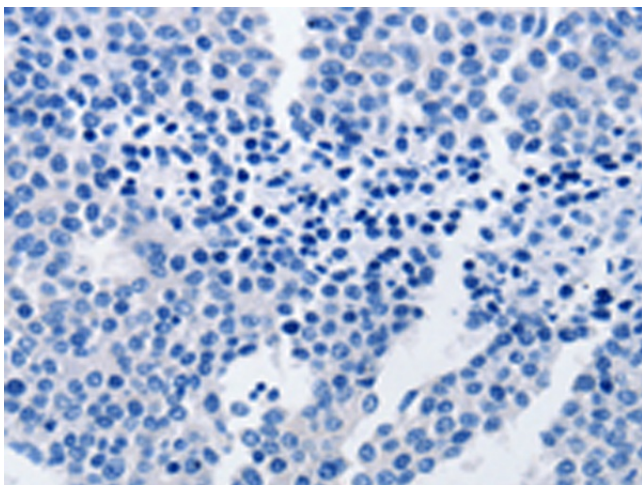
Primary antibody: TA324279 (TRAP1 Antibody) at dilution 1/1500

Secondary antibody: Goat anti rabbit IgG at 1/8000 dilution

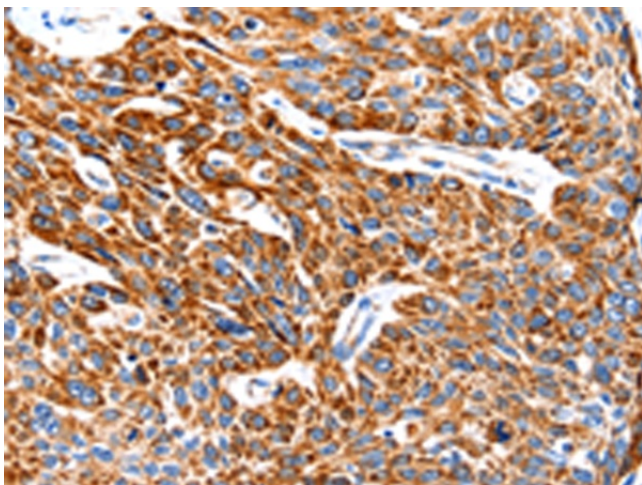
Exposure time: 20 seconds



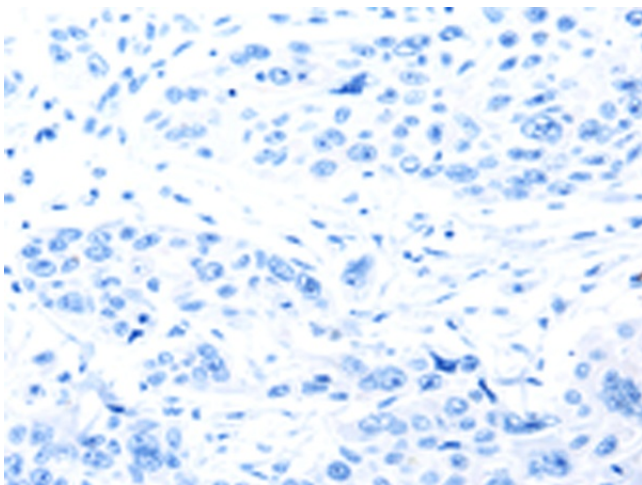
Immunohistochemistry of paraffin-embedded Human liver cancer tissue using TA324279 (TRAP1 Antibody) at dilution 1/100 (Original magnification: \times 200)



Immunohistochemistry of paraffin-embedded Human liver cancer tissue using TA324279 (TRAP1 Antibody) at dilution 1/100, treated with fusion protein. (Original magnification: ×200)



Immunohistochemistry of paraffin-embedded Human esophagus cancer tissue using TA324279 (TRAP1 Antibody) at dilution 1/100 (Original magnification: ×200)



Immunohistochemistry of paraffin-embedded Human esophagus cancer tissue using TA324279 (TRAP1 Antibody) at dilution 1/100, treated with fusion protein. (Original magnification: ×200)