

Product datasheet for **TA324278**

S6K1 (RPS6KB1) Rabbit Polyclonal Antibody

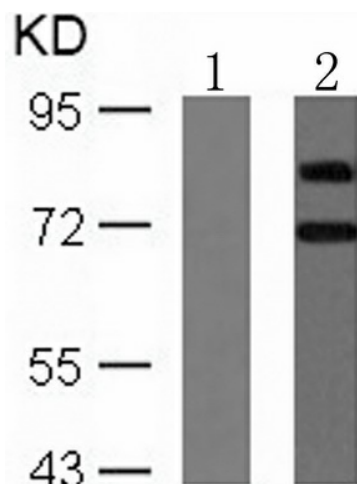
Product data:

Product Type:	Primary Antibodies
Applications:	IF, IHC, WB
Recommended Dilution:	WB: 1:500-1000, IHC: 1:50-100, IF: 1:100-200
Reactivity:	Human, Mouse, Rat
Modifications:	Phospho-specific
Host:	Rabbit
Isotype:	IgG
Clonality:	Polyclonal
Immunogen:	Peptide sequence around phosphorylation site of serine 424 (P-V-S(p)-P-V) derived from Human p70 S6 Kinase.
Formulation:	PBS pH7.3, 0.05% NaN ₃ , 50% glycerol
Concentration:	lot specific
Purification:	Antigen affinity purification
Conjugation:	Unconjugated
Storage:	Store at -20°C as received.
Stability:	Stable for 12 months from date of receipt.
Gene Name:	ribosomal protein S6 kinase B1
Database Link:	NP_003152 Entrez Gene 72508 Mouse Entrez Gene 83840 Rat Entrez Gene 6198 Human P23443
Background:	Phosphorylates specifically ribosomal protein S6 in response to insulin or several classes of mitogens. Promotes protein synthesis by phosphorylating PDCD4 at 'Ser-67' and targeting it for degradation.
Synonyms:	p70 S6KA; p70(S6K)-alpha; p70-alpha; p70-S6K; PS6K; S6K; S6K-beta-1; S6K1; STK14A
Protein Families:	Druggable Genome, Protein Kinase
Protein Pathways:	Acute myeloid leukemia, ErbB signaling pathway, Fc gamma R-mediated phagocytosis, Insulin signaling pathway, mTOR signaling pathway, TGF-beta signaling pathway

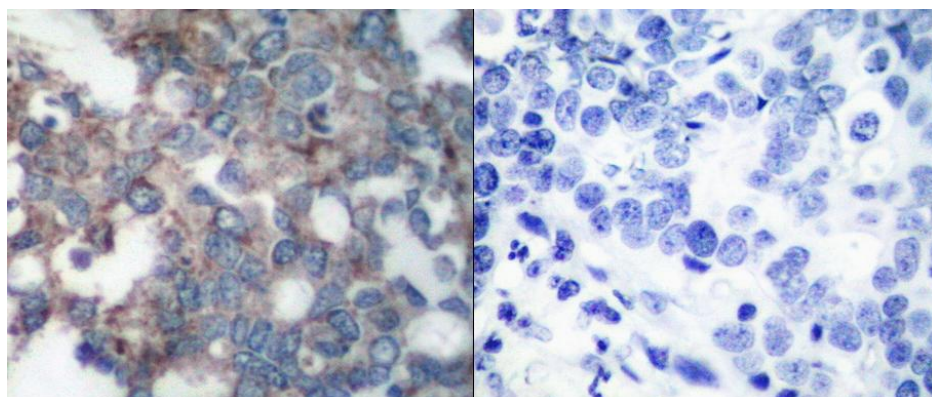


[View online »](#)

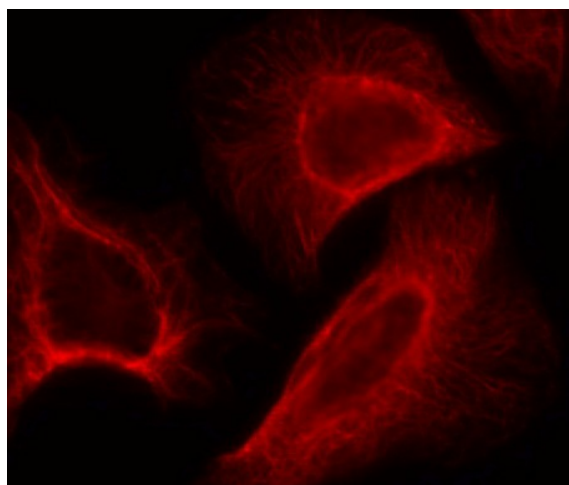
Product images:



Predicted band size: 70; 85 kDa. Positive control: MCF cells treated with EGF lysate. Recommended dilution: 1/ 500-1000. (Gel: 8%SDS-PAGE Lane 1: MCF cells untreated with EGF lysate Lane 2: MCF cells treated with EGF lysate Lysates: 30 ug per lane Primary antibody: 1/500 dilution Secondary antibody: Goat anti Rabbit IgG - H&L (HRP) at 1/10000 dilution Exposure time: 1 minute)



Predicted cell location: Cytoplasm. Positive control: Human breast carcinoma tissue. Recommended dilution: 1/ 50-100 The image on the left is immunohistochemistry of paraffin-embedded human breast carcinoma tissue using RPS6KB1 (Phospho-Ser424) antibody at dilution 1/50, on the right is treated with the synthetic peptide. (Original magnification: x200)



Predicted cell location: Cytoplasm, centrosomal and nuclear. Positive control: HeLa cells. Recommended dilution: 1/ 100-200. The image is immunofluorescence of methanol-fixed HeLa cells using RPS6KB1 (Phospho-Ser424) antibody at dilution 1/100. (Original magnification: x200)