

## Product datasheet for **TA324276**

### **S6K1 (RPS6KB1) Rabbit Polyclonal Antibody**

#### **Product data:**

Product Type:	Primary Antibodies
Applications:	IHC, WB
Recommended Dilution:	WB: 200-1000 WB positive control: Jurkat cells IHC: 15-50 Positive control: Human cervical cancer Predicted cell location: Cytoplasm or Nucleus
Reactivity:	Human, Mouse, Rat
Host:	Rabbit
Isotype:	IgG
Clonality:	Polyclonal
Immunogen:	Fusion protein corresponding to C terminal 300 amino acids of human ribosomal protein S6 kinase, 70kDa, polypeptide 1 ribosomal protein S6 kinase, 70kDa, polypeptide 1
Formulation:	PBS pH7.3, 0.05% NaN <sub>3</sub> , 50% glycerol
Concentration:	lot specific
Purification:	Antigen affinity purification
Conjugation:	Unconjugated
Storage:	Store at -20°C as received.
Stability:	Stable for 12 months from date of receipt.
Predicted Protein Size:	59 kDa
Gene Name:	ribosomal protein S6 kinase B1
Database Link:	<a href="#">NP_001258971</a> <a href="#">Entrez Gene 72508 Mouse</a> <a href="#">Entrez Gene 83840 Rat</a> <a href="#">Entrez Gene 6198 Human</a> <a href="#">P23443</a>



[View online »](#)

**Background:**

This gene encodes a member of the RSK (ribosomal S6 kinase) family of serine/threonine kinases. This kinase contains 2 non-identical kinase catalytic domains and phosphorylates several residues of the S6 ribosomal protein. The kinase activity of this protein leads to an increase in protein synthesis and cell proliferation. Amplification of the region of DNA encoding this gene and overexpression of this kinase are seen in some breast cancer cell lines. Alternate translational start sites have been described and alternate transcriptional splice variants have been observed but have not been thoroughly characterized.

**Synonyms:**

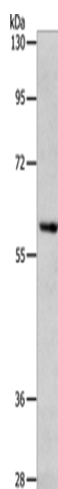
p70 S6KA; p70(S6K)-alpha; p70-alpha; p70-S6K; PS6K; S6K; S6K-beta-1; S6K1; STK14A

**Protein Families:**

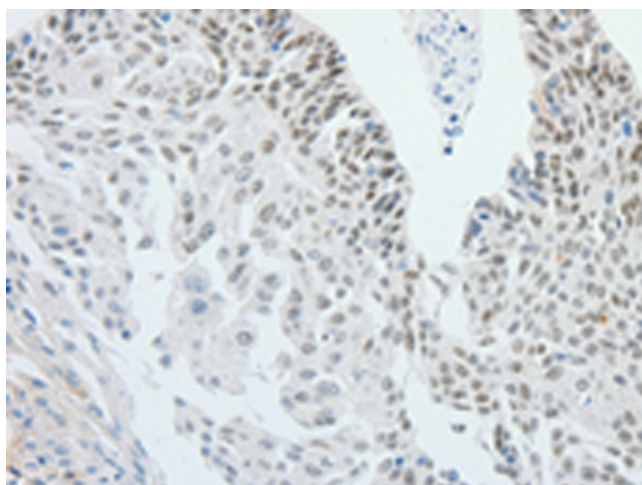
Druggable Genome, Protein Kinase

**Protein Pathways:**

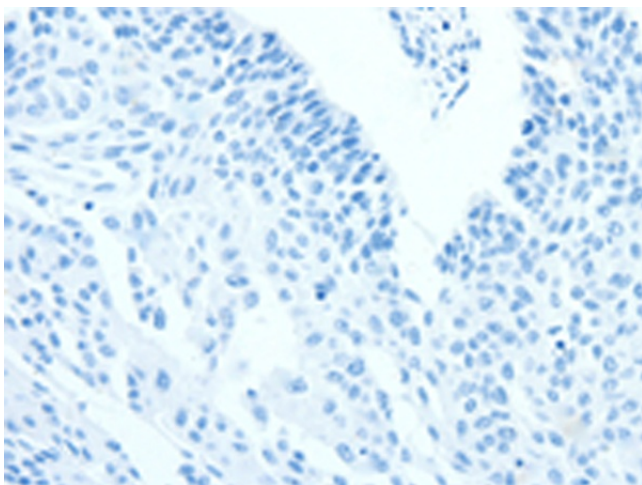
Acute myeloid leukemia, ErbB signaling pathway, Fc gamma R-mediated phagocytosis, Insulin signaling pathway, mTOR signaling pathway, TGF-beta signaling pathway

**Product images:**

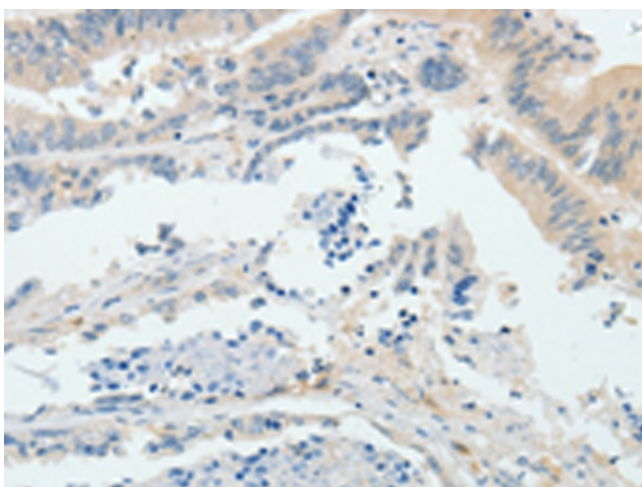
Gel: 8%SDS-PAGE  
Lysate: 40 µg  
Lane: Jurkat cells  
Primary antibody: TA324276 (RPS6KB1 Antibody) at dilution 1/200  
Secondary antibody: Goat anti rabbit IgG at 1/8000 dilution  
Exposure time: 1 minute



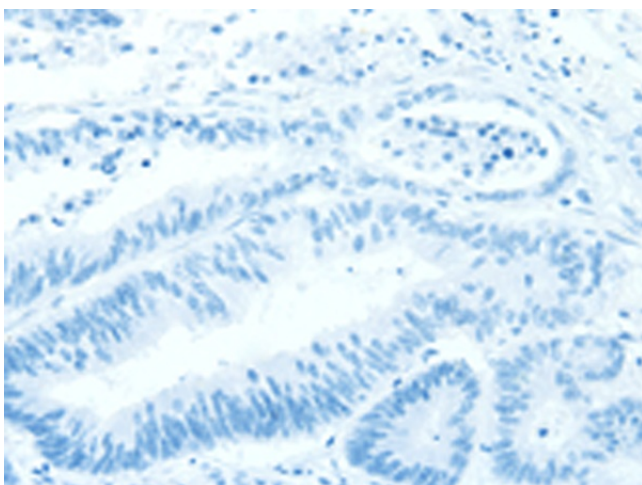
Immunohistochemistry of paraffin-embedded Human cervical cancer tissue using TA324276 (RPS6KB1 Antibody) at dilution 1/25 (Original magnification: ×200)



Immunohistochemistry of paraffin-embedded Human cervical cancer tissue using TA324276 (RPS6KB1 Antibody) at dilution 1/25, treated with fusion protein. (Original magnification:  $\times 200$ )



Immunohistochemistry of paraffin-embedded Human colon cancer tissue using TA324276 (RPS6KB1 Antibody) at dilution 1/25 (Original magnification:  $\times 200$ )



Immunohistochemistry of paraffin-embedded Human colon cancer tissue using TA324276 (RPS6KB1 Antibody) at dilution 1/25, treated with fusion protein. (Original magnification:  $\times 200$ )