

Product datasheet for **TA324266**

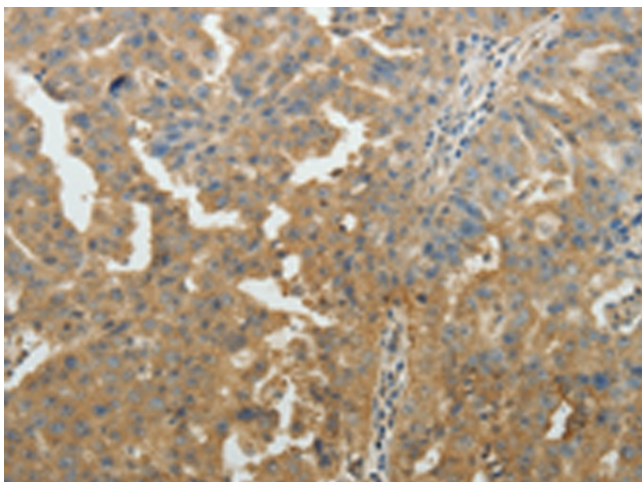
Synaptotagmin VI (SYT6) Rabbit Polyclonal Antibody

Product data:

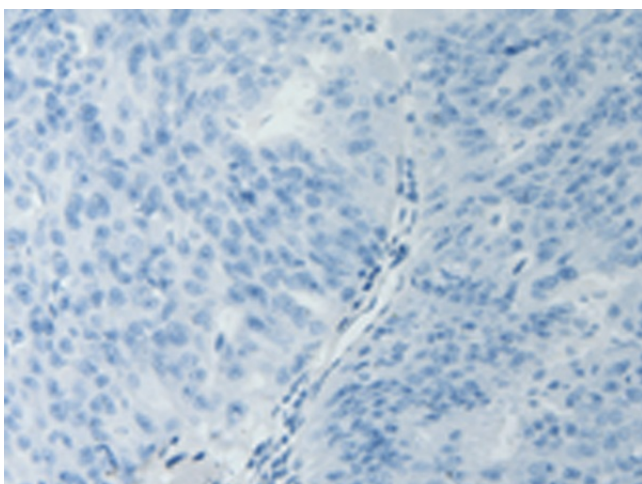
| | |
|-----------------------|---|
| Product Type: | Primary Antibodies |
| Applications: | IHC |
| Recommended Dilution: | IHC: 50-200 Positive control: Human ovarian cancer Predicted cell location: Cytoplasm |
| Reactivity: | Human, Mouse, Rat |
| Host: | Rabbit |
| Isotype: | IgG |
| Clonality: | Polyclonal |
| Immunogen: | Fusion protein corresponding to N terminal 200 amino acids of human synaptotagmin VI |
| Formulation: | PBS pH7.3, 0.05% NaN ₃ , 50% glycerol |
| Concentration: | lot specific |
| Purification: | Antigen affinity purification |
| Conjugation: | Unconjugated |
| Storage: | Store at -20°C as received. |
| Stability: | Stable for 12 months from date of receipt. |
| Gene Name: | synaptotagmin 6 |
| Database Link: | NP_995320 Entrez Gene 54524 Mouse Entrez Gene 60565 Rat Entrez Gene 148281 Human Q5T7P8 |
| Background: | The protein encoded by this gene belongs to the synaptotagmin family. Synaptotagmins share a common domain structure that includes a transmembrane domain and a cytoplasmic region composed of 2 C2 domains; and are involved in calcium-dependent exocytosis of synaptic vesicles. This protein has been shown to be a key component of the secretory machinery involved in acrosomal exocytosis. Alternatively spliced transcript variants have been found for this gene. |
| Synonyms: | sytVI |
| Protein Families: | Secreted Protein, Transmembrane |



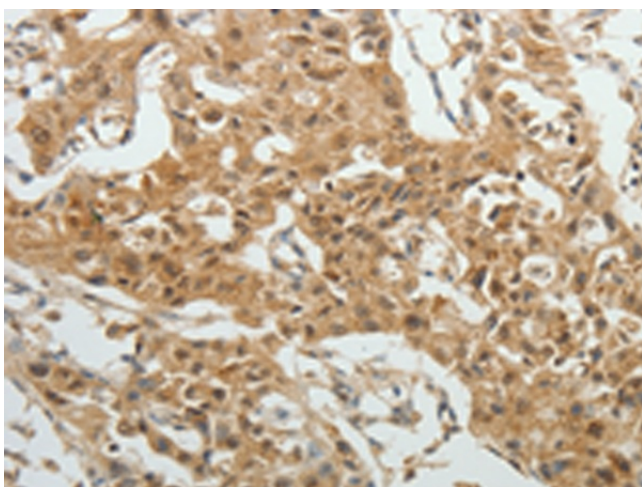
[View online »](#)

Product images:

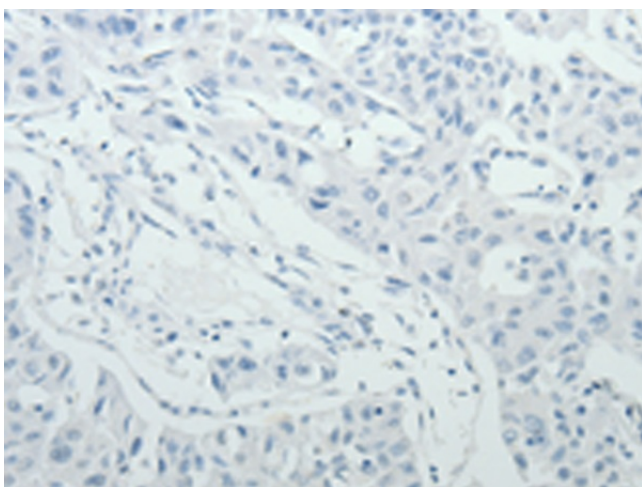
Immunohistochemistry of paraffin-embedded Human ovarian cancer tissue using TA324266 (SYT6 Antibody) at dilution 1/40 (Original magnification: $\times 200$)



Immunohistochemistry of paraffin-embedded Human ovarian cancer tissue using TA324266 (SYT6 Antibody) at dilution 1/40, treated with fusion protein. (Original magnification: $\times 200$)



Immunohistochemistry of paraffin-embedded Human lung cancer tissue using TA324266 (SYT6 Antibody) at dilution 1/40 (Original magnification: ×200)



Immunohistochemistry of paraffin-embedded Human lung cancer tissue using TA324266 (SYT6 Antibody) at dilution 1/40, treated with fusion protein. (Original magnification: ×200)