

## Product datasheet for **TA324264S**

### MCM3 Rabbit Polyclonal Antibody

#### Product data:

Product Type:	Primary Antibodies
Applications:	IHC, WB
Recommended Dilution:	WB: 500-2000 WB positive control: K562, Jurkat and hela cells IHC: 50-200 Positive control: Human liver cancer Predicted cell location: Nucleus
Reactivity:	Human, Mouse
Host:	Rabbit
Isotype:	IgG
Clonality:	Polyclonal
Immunogen:	Fusion protein corresponding to C terminal 300 amino acids of human minichromosome maintenance complex component 3
Formulation:	PBS pH7.3, 0.05% NaN <sub>3</sub> , 50% glycerol
Purification:	Antigen affinity purification
Conjugation:	Unconjugated
Storage:	Store at -20°C as received.
Stability:	Stable for 12 months from date of receipt.
Predicted Protein Size:	91 kDa
Gene Name:	minichromosome maintenance complex component 3
Database Link:	<a href="#">NP_001257401</a> <a href="#">Entrez Gene 17215 Mouse</a> <a href="#">Entrez Gene 4172 Human</a> <a href="#">P25205</a>



[View online »](#)

**Background:**

The protein encoded by this gene is one of the highly conserved mini-chromosome maintenance proteins (MCM) that are involved in the initiation of eukaryotic genome replication. The hexameric protein complex formed by MCM proteins is a key component of the pre-replication complex (pre\_RC) and may be involved in the formation of replication forks and in the recruitment of other DNA replication related proteins. This protein is a subunit of the protein complex that consists of MCM2-7. It has been shown to interact directly with MCM5/CDC46. This protein also interacts with and is acetylated by MCM3AP; a chromatin-associated acetyltransferase. The acetylation of this protein inhibits the initiation of DNA replication and cell cycle progression. Two transcript variants encoding different isoforms have been found for this gene.

**Synonyms:**

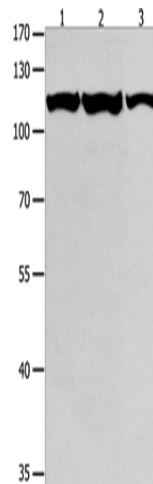
HCC5; P1-MCM3; P1.h; RLFB

**Protein Families:**

Druggable Genome, Stem cell - Pluripotency, Transcription Factors

**Protein Pathways:**

Cell cycle, DNA replication

**Product images:**

Gel: 8%SDS-PAGE

Lysate: 40 µg

Lane 1-3: K562 cells

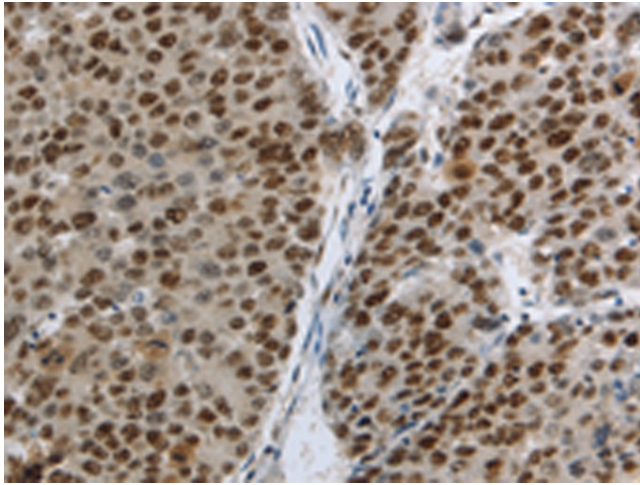
Jurkat cells

heLa cells

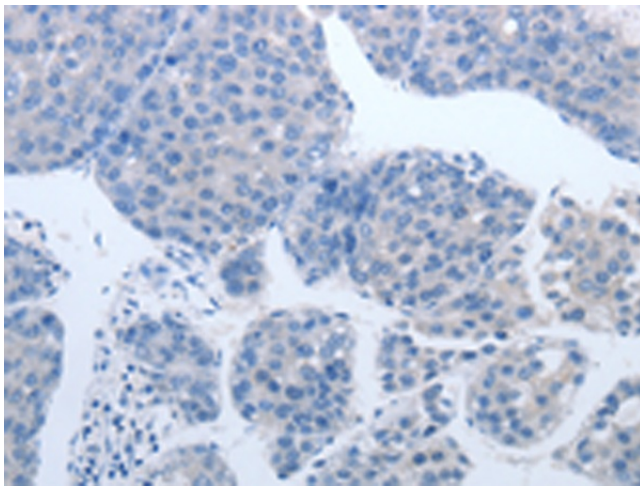
Primary antibody: [TA324264] (MCM3 Antibody)  
at dilution 1/550

Secondary antibody: Goat anti rabbit IgG at  
1/8000 dilution

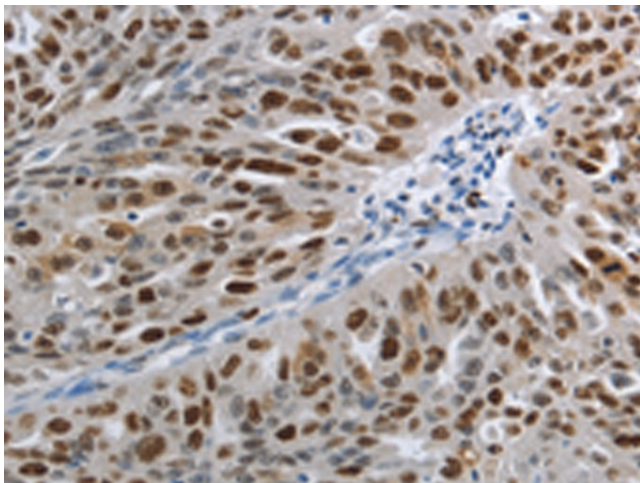
Exposure time: 1 minute



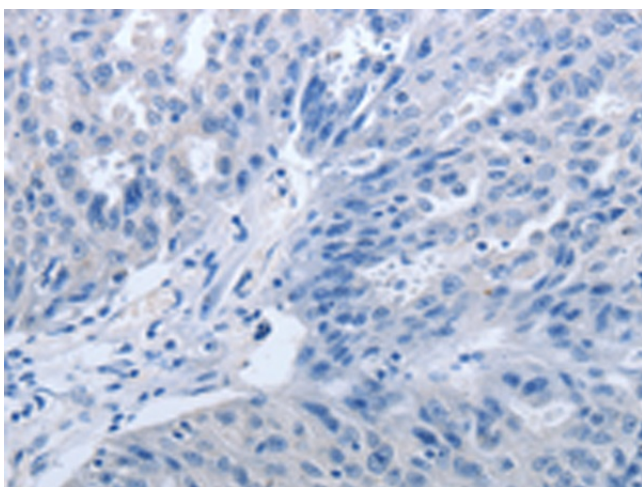
Immunohistochemistry of paraffin-embedded Human liver cancer tissue using [TA324264] (MCM3 Antibody) at dilution 1/30 (Original magnification: ×200)



Immunohistochemistry of paraffin-embedded Human liver cancer tissue using [TA324264] (MCM3 Antibody) at dilution 1/30, treated with fusion protein. (Original magnification: ×200)



Immunohistochemistry of paraffin-embedded Human ovarian cancer tissue using [TA324264] (MCM3 Antibody) at dilution 1/30 (Original magnification: ×200)



Immunohistochemistry of paraffin-embedded Human ovarian cancer tissue using [TA324264] (MCM3 Antibody) at dilution 1/30, treated with fusion protein. (Original magnification:  $\times 200$ )