

## Product datasheet for **TA324260**

### MAP4K3 Rabbit Polyclonal Antibody

#### Product data:

Product Type:	Primary Antibodies
Applications:	IHC, WB
Recommended Dilution:	WB: 500-2000 WB positive control: Mouse heart tissue IHC: 25-100 Positive control: Human thyroid cancer Predicted cell location: Cytoplasm
Reactivity:	Human, Mouse, Rat
Host:	Rabbit
Isotype:	IgG
Clonality:	Polyclonal
Immunogen:	Fusion protein corresponding to a region derived from 556-867 amino acids of human mitogen-activated protein kinase kinase kinase kinase 3
Formulation:	PBS pH7.3, 0.05% NaN <sub>3</sub> , 50% glycerol
Concentration:	lot specific
Purification:	Antigen affinity purification
Conjugation:	Unconjugated
Storage:	Store at -20°C as received.
Stability:	Stable for 12 months from date of receipt.
Predicted Protein Size:	101 kDa
Gene Name:	mitogen-activated protein kinase kinase kinase kinase 3
Database Link:	<a href="#">NP_001257354</a> <a href="#">Entrez Gene 170920 Rat</a> <a href="#">Entrez Gene 225028 Mouse</a> <a href="#">Entrez Gene 8491 Human</a> <a href="#">Q8IVH8</a>



[View online »](#)

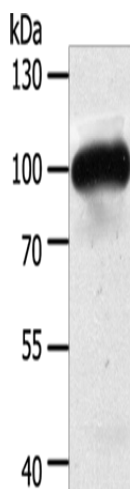
**Background:** This gene encodes a member of the mitogen-activated protein kinase kinase kinase kinase family. The encoded protein activates key effectors in cell signalling; among them c-Jun. Alternatively spliced transcripts encoding multiple isoforms have been observed for this gene. May play a role in the response to environmental stress. Appears to act upstream of the JUN N-terminal pathway. Ubiquitously expressed in all tissues examined; with high levels in heart; brain; placenta; skeletal muscle; kidney and pancreas and lower levels in lung and liver.

**Synonyms:** GLK; MAPK3; MEKK3; MEKK3; RAB8IPL1

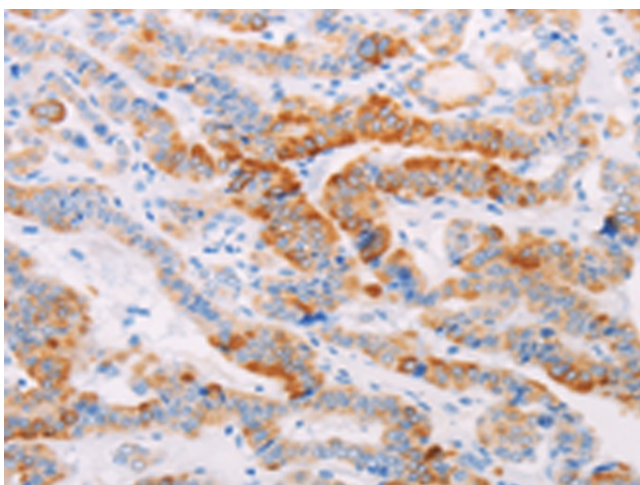
**Protein Families:** Druggable Genome, Protein Kinase

**Protein Pathways:** MAPK signaling pathway

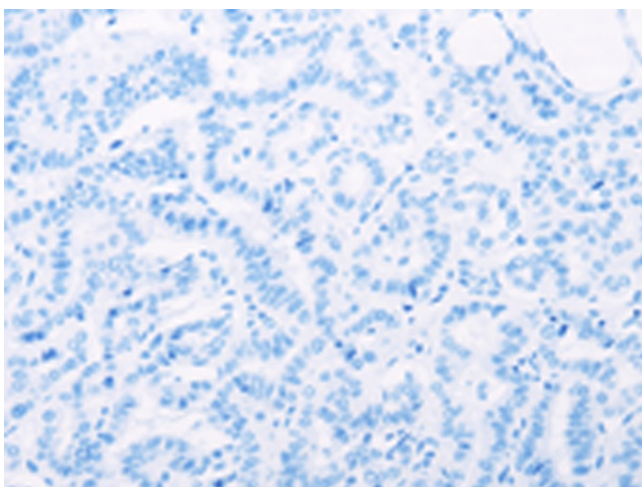
### Product images:



Gel: 10%SDS-PAGE  
Lysate: 50 µg  
Lane: Mouse heart tissue  
Primary antibody: TA324260 (MAP4K3 Antibody) at dilution 1/400  
Secondary antibody: Goat anti rabbit IgG at 1/8000 dilution  
Exposure time: 10 seconds



Immunohistochemistry of paraffin-embedded Human thyroid cancer tissue using TA324260 (MAP4K3 Antibody) at dilution 1/30 (Original magnification: ×200)



Immunohistochemistry of paraffin-embedded Human thyroid cancer tissue using TA324260 (MAP4K3 Antibody) at dilution 1/30, treated with fusion protein. (Original magnification: ×200)