

Product datasheet for **TA324259**

Integrin beta 4 binding protein (EIF6) Rabbit Polyclonal Antibody

Product data:

Product Type:	Primary Antibodies
Applications:	WB
Recommended Dilution:	WB: 1:500-2000
Reactivity:	Human, Mouse, Rat
Host:	Rabbit
Isotype:	IgG
Clonality:	Polyclonal
Immunogen:	Full length fusion protein
Formulation:	PBS pH7.3, 0.05% NaN ₃ , 50% glycerol
Concentration:	lot specific
Purification:	Antigen affinity purification
Conjugation:	Unconjugated
Storage:	Store at -20°C as received.
Stability:	Stable for 12 months from date of receipt.
Predicted Protein Size:	27 kDa
Gene Name:	eukaryotic translation initiation factor 6
Database Link:	NP_001254739 Entrez Gene 16418 MouseEntrez Gene 305506 RatEntrez Gene 3692 Human P56537

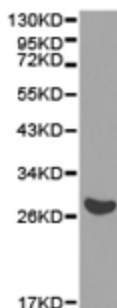
Background: Eukaryotic initiation factor 6 (eIF6) is required for the 60S ribosomal subunit assembly in the nucleolus. In the cytoplasm, this protein is bound to 60S ribosome subunits and prevents them from joining 40S ribosome subunits to form 80S ribosomes. eIF6 is also shown to associate with the RNA-induced silencing complex (RISC). Deletion of eIF6 abolishes the miRNA-mediated gene silencing. eIF6 may play its essential role in miRNA-mediated silencing by inhibiting translation initiation or ribosome recycling.

Synonyms: b(2)gcn; CAB; eIF-6; EIF3A; ITGB4BP; p27(BBP); p27BBP

Protein Families: Druggable Genome



[View online »](#)

Product images:

Predicted band size: 27 kDa. Positive control: COLO320 cell lysate. Recommended dilution: 1/500-2000. (Gel: 10%SDS-PAGE Lysate: 40 ug Primary antibody: 1/500 dilution Secondary antibody: Goat anti Rabbit IgG - H&L (HRP) at 1/10000 dilution Exposure time: 1 minute)