

## Product datasheet for **TA324255**

### PDCD6 Rabbit Polyclonal Antibody

#### Product data:

Product Type:	Primary Antibodies
Applications:	IHC, WB
Recommended Dilution:	WB: 200-1000 WB positive control: Jurkat and hela cells IHC: 25-100 Positive control: Human ovarian cancer Predicted cell location: Cytoplasm, Nucleus
Reactivity:	Human, Mouse
Host:	Rabbit
Isotype:	IgG
Clonality:	Polyclonal
Immunogen:	Full length fusion protein
Formulation:	PBS pH7.3, 0.05% NaN <sub>3</sub> , 50% glycerol
Concentration:	lot specific
Purification:	Antigen affinity purification
Conjugation:	Unconjugated
Storage:	Store at -20°C as received.
Stability:	Stable for 12 months from date of receipt.
Predicted Protein Size:	22 kDa
Gene Name:	programmed cell death 6
Database Link:	<a href="#">NP_001254485</a> <a href="#">Entrez Gene 18570 Mouse</a> <a href="#">Entrez Gene 10016 Human</a> <a href="#">O75340</a>



[View online »](#)

**Background:**

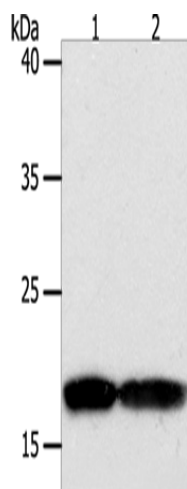
This gene encodes a calcium-binding protein belonging to the penta-EF-hand protein family. Calcium binding is important for homodimerization and for conformational changes required for binding to other protein partners. This gene product participates in T cell receptor-, Fas-, and glucocorticoid-induced programmed cell death. In mice deficient for this gene product, however, apoptosis was not blocked suggesting this gene product is functionally redundant. Alternatively spliced transcript variants encoding multiple isoforms have been observed for this gene, and a pseudogene of this gene is also located on the short arm of chromosome 5.

**Synonyms:**

ALG-2; ALG2; PEF1B

**Protein Families:**

Druggable Genome

**Product images:**

Gel: 10+12%SDS-PAGE

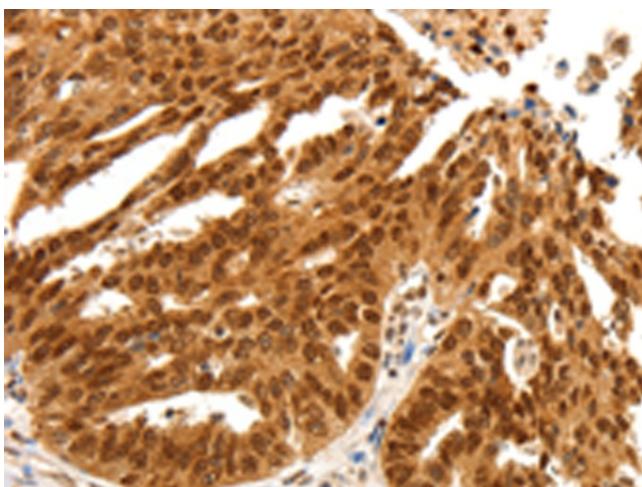
Lysate: 50  $\mu$ g

Lane 1-2: Jurkat cells  
HeLa cells

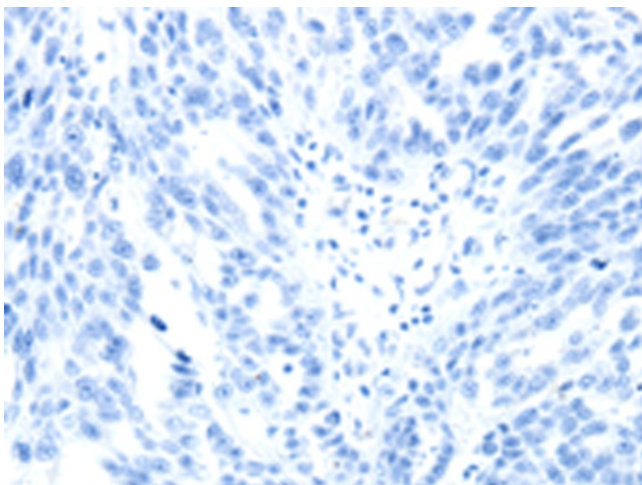
Primary antibody: TA324255 (PDCD6 Antibody) at  
dilution 1/200

Secondary antibody: Goat anti rabbit IgG at  
1/8000 dilution

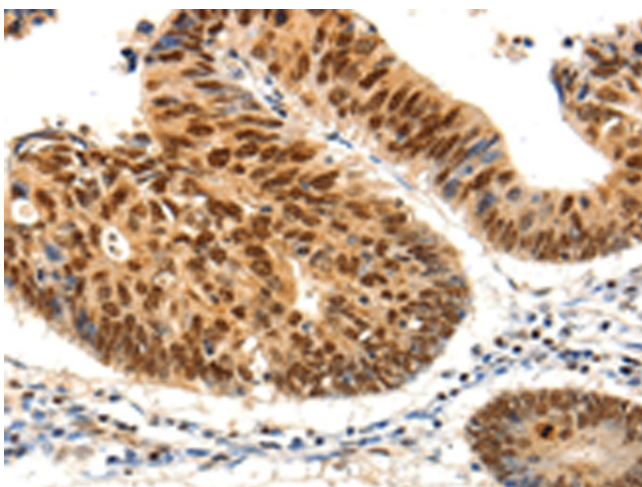
Exposure time: 1 minute



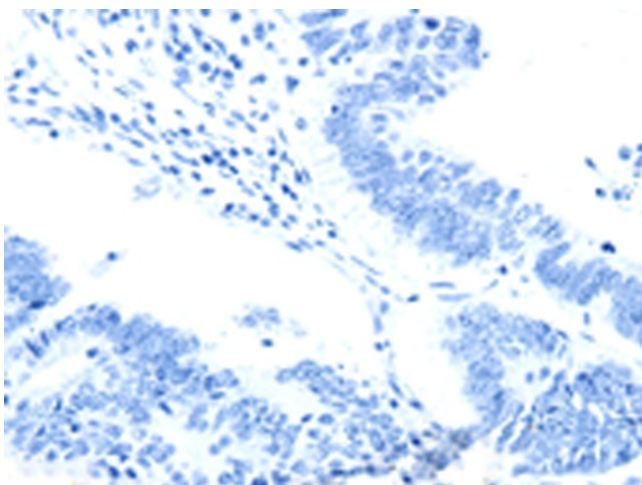
Immunohistochemistry of paraffin-embedded  
Human ovarian cancer tissue using TA324255  
(PDCD6 Antibody) at dilution 1/25 (Original  
magnification:  $\times$ 200)



Immunohistochemistry of paraffin-embedded Human ovarian cancer tissue using TA324255 (PDCD6 Antibody) at dilution 1/25, treated with fusion protein. (Original magnification:  $\times 200$ )



Immunohistochemistry of paraffin-embedded Human colon cancer tissue using TA324255 (PDCD6 Antibody) at dilution 1/25 (Original magnification:  $\times 200$ )



Immunohistochemistry of paraffin-embedded Human colon cancer tissue using TA324255 (PDCD6 Antibody) at dilution 1/25, treated with fusion protein. (Original magnification:  $\times 200$ )