

Product datasheet for **TA324249**

ADAM15 Rabbit Polyclonal Antibody

Product data:

Product Type:	Primary Antibodies
Applications:	IHC, WB
Recommended Dilution:	WB: 500-2000 WB positive control: NIH/3T3, HepG2, PC-3, Jurkat cell, Mouse heart tissue lysates IHC: 50-200 Positive control: Human tonsil Predicted cell location: Cytoplasm
Reactivity:	Human, Mouse, Rat
Host:	Rabbit
Isotype:	IgG
Clonality:	Polyclonal
Immunogen:	Fusion protein corresponding to a region derived from 213-414 amino acids of human ADAM metallopeptidase domain 15
Formulation:	PBS pH7.3, 0.05% NaN ₃ , 50% glycerol
Concentration:	lot specific
Purification:	Antigen affinity purification
Conjugation:	Unconjugated
Storage:	Store at -20°C as received.
Stability:	Stable for 12 months from date of receipt.
Gene Name:	ADAM metallopeptidase domain 15
Database Link:	NP_997080 Entrez Gene 11490 Mouse Entrez Gene 57025 Rat Entrez Gene 8751 Human Q13444



[View online »](#)

Background:

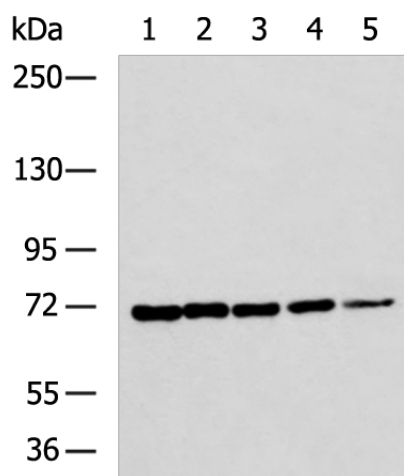
The protein encoded by this gene is a member of the ADAM (a disintegrin and metalloproteinase) protein family. ADAM family members are type I transmembrane glycoproteins known to be involved in cell adhesion and proteolytic ectodomain processing of cytokines and adhesion molecules. This protein contains multiple functional domains including a zinc-binding metalloprotease domain, a disintegrin-like domain, as well as a EGF-like domain. Through its disintegrin-like domain, this protein specifically interacts with the integrin beta chain, beta 3. It also interacts with Src family protein-tyrosine kinases in a phosphorylation-dependent manner, suggesting that this protein may function in cell-cell adhesion as well as in cellular signaling. Multiple alternatively spliced transcript variants encoding distinct isoforms have been observed.

Synonyms:

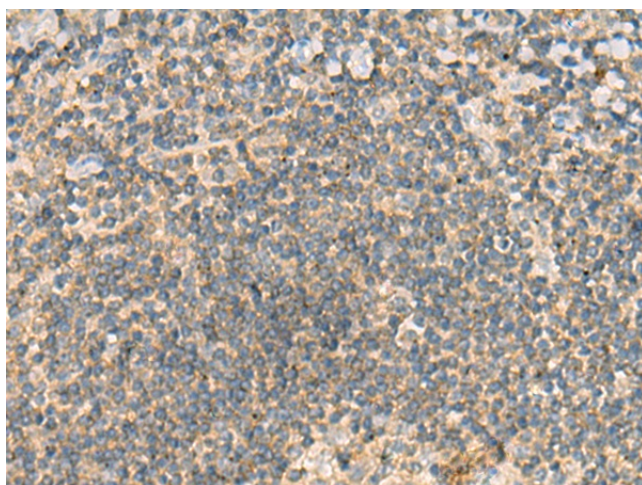
MDC15

Protein Families:

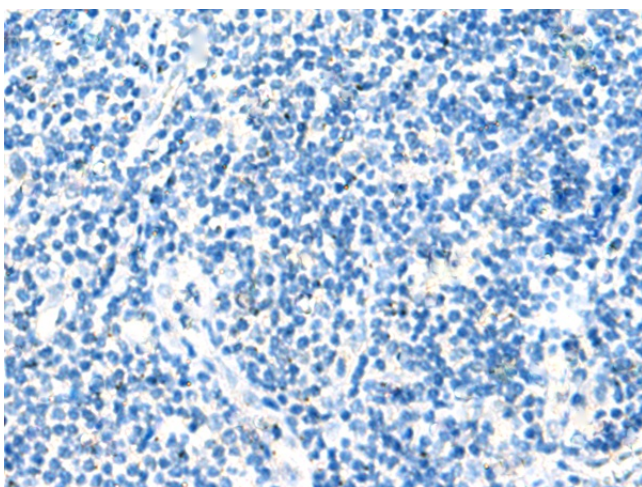
Druggable Genome, Protease, Transmembrane

Product images:

Gel: 6%SDS-PAGE
Lysate: 40 μ g
Lane 1-5: NIH/3T3
HepG2
PC-3
Jurkat cell
Mouse heart tissue lysates
Primary antibody: TA324249 (ADAM15 Antibody)
at dilution 1/800
Secondary antibody: Goat anti rabbit IgG at
1/5000 dilution
Exposure time: 5 minutes



Immunohistochemistry of paraffin-embedded
Human tonsil tissue using TA324249 (ADAM15
Antibody) at dilution 1/70 (Original magnification:
 \times 200)



Immunohistochemistry of paraffin-embedded Human tonsil tissue using TA324249 (ADAM15 Antibody) at dilution 1/70, treated with fusion protein. (Original magnification: x200)