

## Product datasheet for **TA324248S**

### ADAM15 Rabbit Polyclonal Antibody

#### Product data:

Product Type:	Primary Antibodies
Applications:	IHC, WB
Recommended Dilution:	WB: 500-2000 WB positive control: Jurkat, PC-3, HepG2 and NIH/3T3 cell lysates IHC: 50-200 Positive control: Human tonsil Predicted cell location: Cytoplasm
Reactivity:	Human, Mouse, Rat
Host:	Rabbit
Isotype:	IgG
Clonality:	Polyclonal
Immunogen:	Fusion protein corresponding to a region derived from 213-414 amino acids of human ADAM metallopeptidase domain 15
Formulation:	PBS pH7.3, 0.05% NaN <sub>3</sub> , 50% glycerol
Purification:	Antigen affinity purification
Conjugation:	Unconjugated
Storage:	Store at -20°C as received.
Stability:	Stable for 12 months from date of receipt.
Predicted Protein Size:	93 kDa
Gene Name:	ADAM metallopeptidase domain 15
Database Link:	<a href="#">NP_001248393</a> <a href="#">Entrez Gene 11490 Mouse</a> <a href="#">Entrez Gene 57025 Rat</a> <a href="#">Entrez Gene 8751 Human</a> <a href="#">Q13444</a>



[View online »](#)

**Background:**

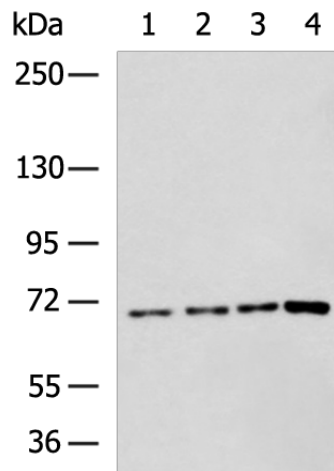
The protein encoded by this gene is a member of the ADAM (a disintegrin and metalloproteinase) protein family. ADAM family members are type I transmembrane glycoproteins known to be involved in cell adhesion and proteolytic ectodomain processing of cytokines and adhesion molecules. This protein contains multiple functional domains including a zinc-binding metalloprotease domain, a disintegrin-like domain, as well as a EGF-like domain. Through its disintegrin-like domain, this protein specifically interacts with the integrin beta chain, beta 3. It also interacts with Src family protein-tyrosine kinases in a phosphorylation-dependent manner, suggesting that this protein may function in cell-cell adhesion as well as in cellular signaling. Multiple alternatively spliced transcript variants encoding distinct isoforms have been observed.

**Synonyms:**

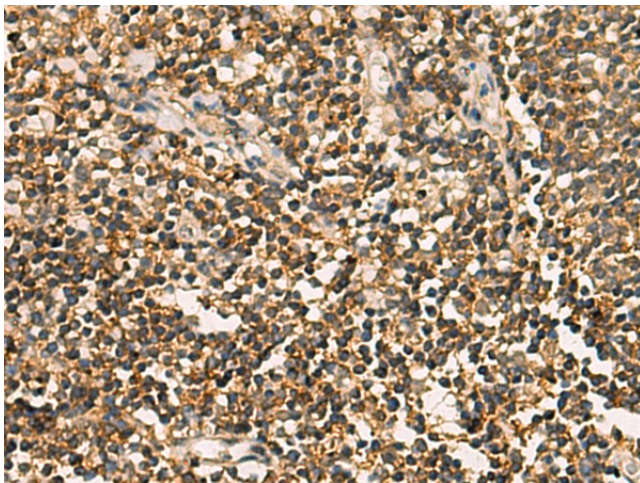
MDC15

**Protein Families:**

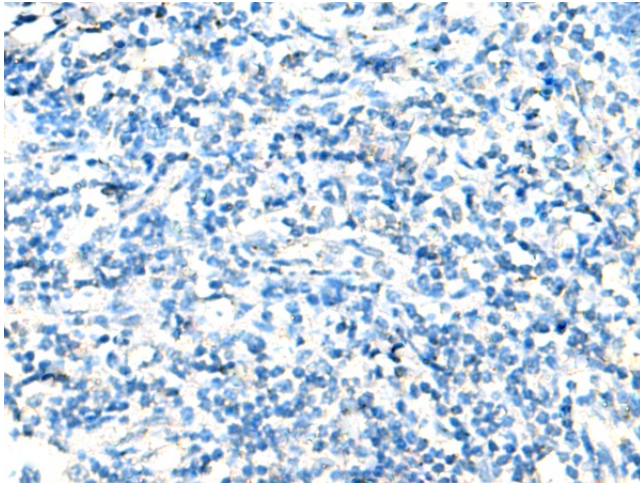
Druggable Genome, Protease, Transmembrane

**Product images:**

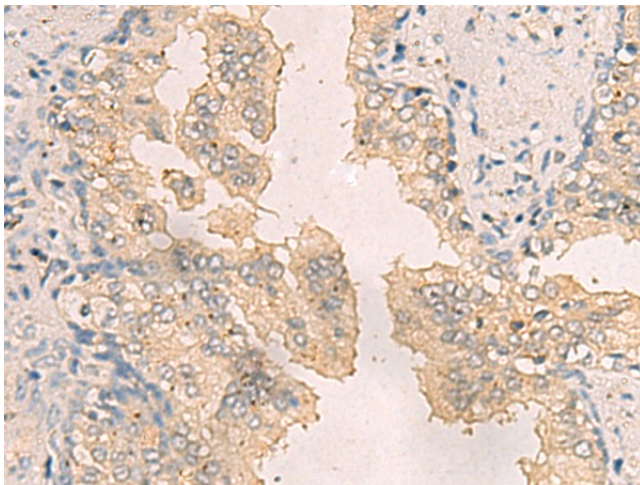
Gel: 6%SDS-PAGE  
Lysate: 40 µg  
Lane 1-4: Jurkat  
PC-3  
HepG2 and NIH/3T3 cell lysates  
Primary antibody: [TA324248] (ADAM15  
Antibody) at dilution 1/800  
Secondary antibody: Goat anti rabbit IgG at  
1/5000 dilution  
Exposure time: 5 minutes



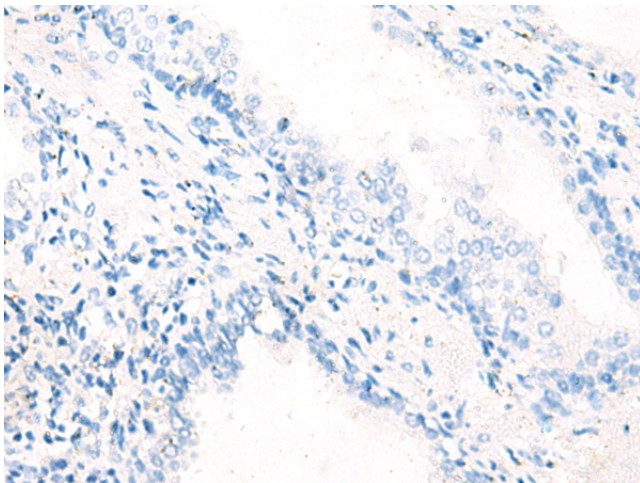
Immunohistochemistry of paraffin-embedded  
Human tonsil tissue using [TA324248] (ADAM15  
Antibody) at dilution 1/65 (Original magnification:  
×200)



Immunohistochemistry of paraffin-embedded Human tonsil tissue using [TA324248] (ADAM15 Antibody) at dilution 1/65, treated with fusion protein. (Original magnification:  $\times 200$ )



Immunohistochemistry of paraffin-embedded Human prostate cancer tissue using [TA324248] (ADAM15 Antibody) at dilution 1/65 (Original magnification:  $\times 200$ )



Immunohistochemistry of paraffin-embedded Human prostate cancer tissue using [TA324248] (ADAM15 Antibody) at dilution 1/65, treated with fusion protein. (Original magnification:  $\times 200$ )