

## Product datasheet for **TA324248**

### ADAM15 Rabbit Polyclonal Antibody

#### Product data:

|                         |  |
|-------------------------|--|
| Product Type:           | Primary Antibodies   |
| Applications:           | IHC, WB  |
| Recommended Dilution:   | WB: 500-2000<br>WB positive control: Jurkat, PC-3, HepG2 and NIH/3T3 cell lysates<br>IHC: 50-200<br>Positive control: Human tonsil<br>Predicted cell location: Cytoplasm       |
| Reactivity:             | Human, Mouse, Rat  |
| Host:                   | Rabbit   |
| Isotype:                | IgG  |
| Clonality:              | Polyclonal   |
| Immunogen:              | Fusion protein corresponding to a region derived from 213-414 amino acids of human ADAM metallopeptidase domain 15   |
| Formulation:            | PBS pH7.3, 0.05% NaN <sub>3</sub> , 50% glycerol   |
| Concentration:          | lot specific   |
| Purification:           | Antigen affinity purification  |
| Conjugation:            | Unconjugated   |
| Storage:                | Store at -20°C as received.  |
| Stability:              | Stable for 12 months from date of receipt.   |
| Predicted Protein Size: | 93 kDa   |
| Gene Name:              | ADAM metallopeptidase domain 15  |
| Database Link:          | <a href="#">NP_001248393</a><br><a href="#">Entrez Gene 11490 Mouse</a> <a href="#">Entrez Gene 57025 Rat</a> <a href="#">Entrez Gene 8751 Human</a><br><a href="#">Q13444</a> |



[View online »](#)

**Background:**

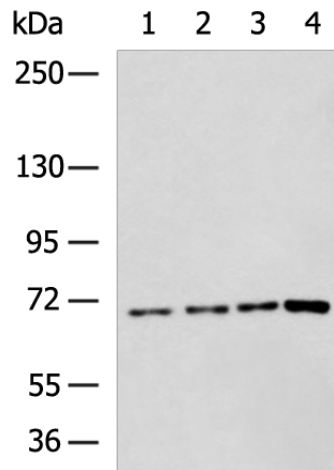
The protein encoded by this gene is a member of the ADAM (a disintegrin and metalloproteinase) protein family. ADAM family members are type I transmembrane glycoproteins known to be involved in cell adhesion and proteolytic ectodomain processing of cytokines and adhesion molecules. This protein contains multiple functional domains including a zinc-binding metalloprotease domain, a disintegrin-like domain, as well as a EGF-like domain. Through its disintegrin-like domain, this protein specifically interacts with the integrin beta chain, beta 3. It also interacts with Src family protein-tyrosine kinases in a phosphorylation-dependent manner, suggesting that this protein may function in cell-cell adhesion as well as in cellular signaling. Multiple alternatively spliced transcript variants encoding distinct isoforms have been observed.

**Synonyms:**

MDC15

**Protein Families:**

Druggable Genome, Protease, Transmembrane

**Product images:**

Gel: 6%SDS-PAGE

Lysate: 40 µg

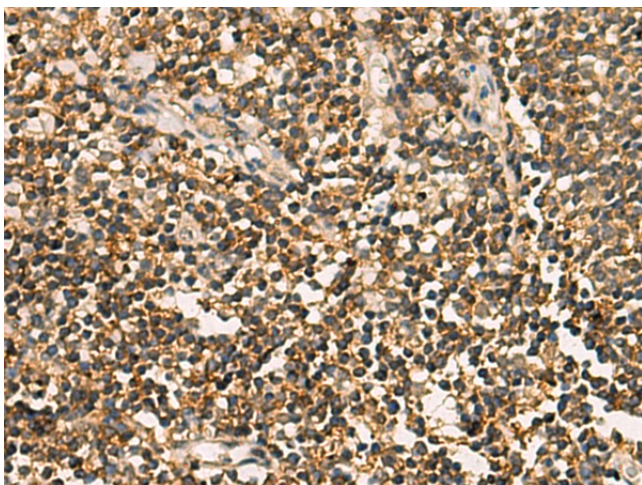
Lane 1-4: Jurkat

PC-3

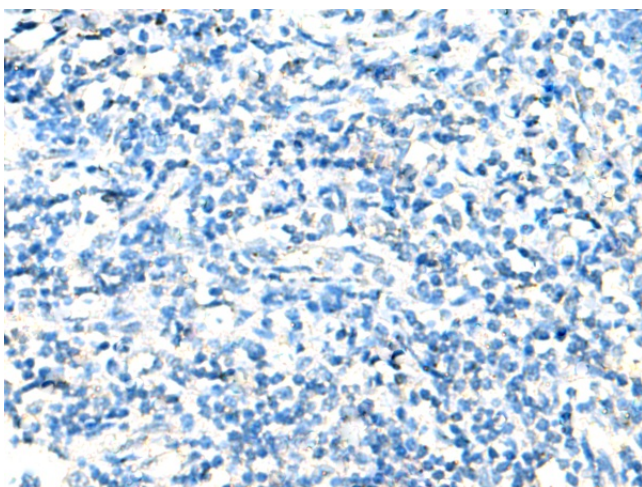
HepG2 and NIH/3T3 cell lysates

Primary antibody: TA324248 (ADAM15 Antibody)  
at dilution 1/800Secondary antibody: Goat anti rabbit IgG at  
1/5000 dilution

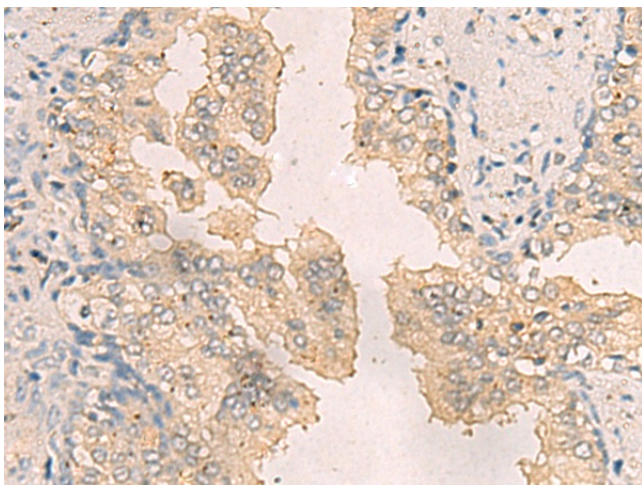
Exposure time: 5 minutes



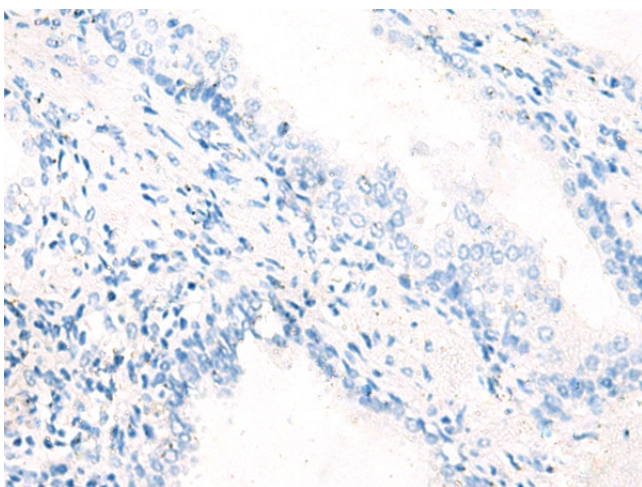
Immunohistochemistry of paraffin-embedded Human tonsil tissue using TA324248 (ADAM15 Antibody) at dilution 1/65 (Original magnification:  $\times 200$ )



Immunohistochemistry of paraffin-embedded Human tonsil tissue using TA324248 (ADAM15 Antibody) at dilution 1/65, treated with fusion protein. (Original magnification:  $\times 200$ )



Immunohistochemistry of paraffin-embedded Human prostate cancer tissue using TA324248 (ADAM15 Antibody) at dilution 1/65 (Original magnification:  $\times 200$ )



Immunohistochemistry of paraffin-embedded Human prostate cancer tissue using TA324248 (ADAM15 Antibody) at dilution 1/65, treated with fusion protein. (Original magnification: ×200)