

Product datasheet for **TA324247**

IL1 Receptor II (IL1R2) Rabbit Polyclonal Antibody

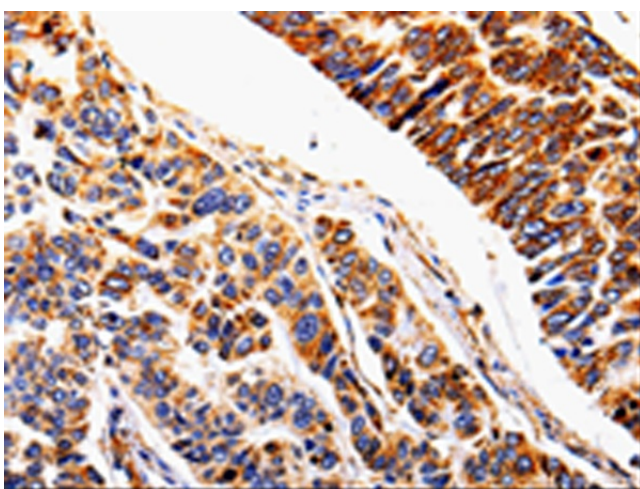
Product data:

Product Type:	Primary Antibodies
Applications:	IHC
Recommended Dilution:	IHC: 25-200 Positive control: Human lung cancer Predicted cell location: Cell membrane, Cytoplasm
Reactivity:	Human
Host:	Rabbit
Isotype:	IgG
Clonality:	Polyclonal
Immunogen:	Fusion protein corresponding to a region derived from 25-239 amino acids of Human Interleukin-1 receptor type 2
Formulation:	PBS pH7.3, 0.05% NaN ₃ , 50% glycerol
Concentration:	lot specific
Purification:	Antigen affinity purification
Conjugation:	Unconjugated
Storage:	Store at -20°C as received.
Stability:	Stable for 12 months from date of receipt.
Gene Name:	interleukin 1 receptor type 2
Database Link:	NP_775465 Entrez Gene 7850 Human P27930

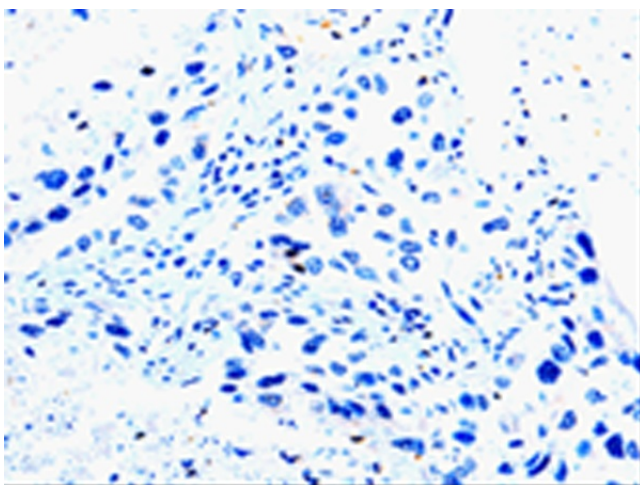


[View online »](#)

- Background:** The protein encoded by this gene is a cytokine receptor that belongs to the interleukin 1 receptor family. This protein binds interleukin alpha (IL1A); interleukin beta (IL1B); and interleukin 1 receptor; type I(IL1R1/IL1RA); and acts as a decoy receptor that inhibits the activity of its ligands. Interleukin 4 (IL4) is reported to antagonize the activity of interleukin 1 by inducing the expression and release of this cytokine. This gene and three other genes form a cytokine receptor gene cluster on chromosome 2q12. Alternative splicing results in multiple transcript variants and protein isoforms. Alternative splicing produces both membrane-bound and soluble proteins. A soluble protein is also produced by proteolytic cleavage.
- Synonyms:** CD121b; IL1RB; MGC47725
- Protein Families:** Druggable Genome, Transmembrane
- Protein Pathways:** Cytokine-cytokine receptor interaction, Hematopoietic cell lineage, MAPK signaling pathway

Product images:

Immunohistochemistry of paraffin-embedded Human lung cancer tissue using TA324247 (IL1R2 Antibody) at dilution 1/20 (Original magnification: ×200)



Immunohistochemistry of paraffin-embedded Human lung cancer tissue using TA324247 (IL1R2 Antibody) at dilution 1/20, treated with fusion protein. (Original magnification: ×200)