

Product datasheet for **TA324241**

SPATA20 Rabbit Polyclonal Antibody

Product data:

Product Type:	Primary Antibodies
Applications:	IHC, WB
Recommended Dilution:	WB: 500-2000 WB positive control: A549 and Incap cells, human seminoma tissue IHC: 100-300 Positive control: Human esophagus cancer Predicted cell location: Nucleus
Reactivity:	Human
Host:	Rabbit
Isotype:	IgG
Clonality:	Polyclonal
Immunogen:	Synthetic peptide corresponding to a region derived from 57-70 amino acids of human spermatogenesis associated 20
Formulation:	PBS pH7.3, 0.05% NaN ₃ , 50% glycerol
Concentration:	lot specific
Purification:	Antigen affinity purification
Conjugation:	Unconjugated
Storage:	Store at -20°C as received.
Stability:	Stable for 12 months from date of receipt.
Predicted Protein Size:	88 kDa
Gene Name:	spermatogenesis associated 20
Database Link:	NP_001245301 Entrez Gene 64847 Human Q8TB22
Background:	The protein may play a role in fertility regulation. It were significantly upregulated in individual bile samples from Cholangiocarcinoma patients by Western blotting and Immunohistochemistry, relative to normal tissues. It acts as a potential serum diagnostic biomarker for Cholangiocarcinoma.

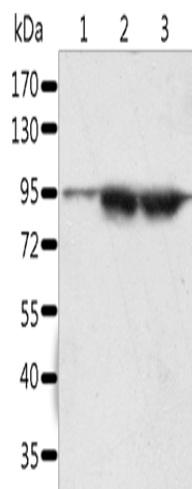


[View online »](#)

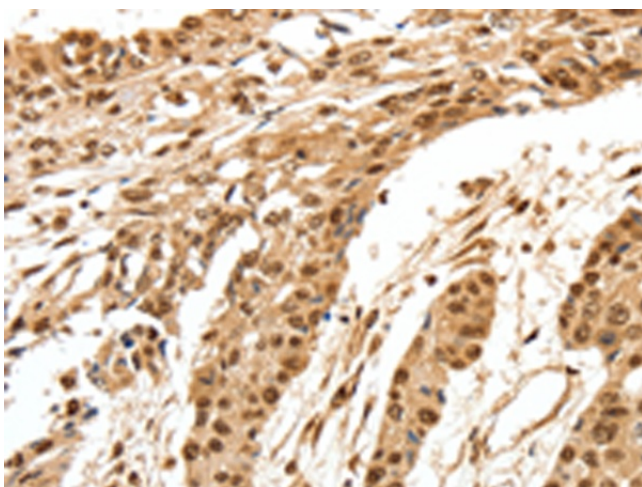
Synonyms: HEL-S-98; SSP411; Tisp78

Protein Families: Druggable Genome

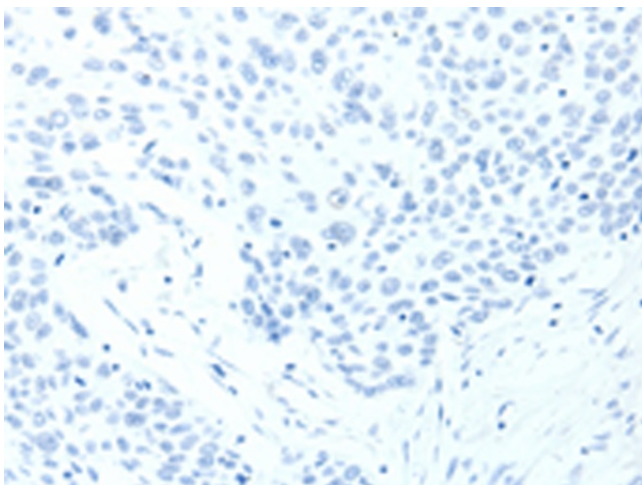
Product images:



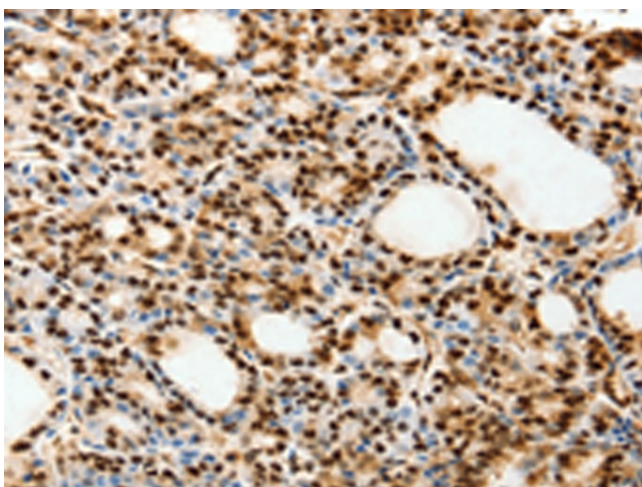
Gel: 10%SDS-PAGE
Lysate: 60 µg
Lane 1-3: A549 cells
Incap cells
human seminoma tissue
Primary antibody: TA324241 (SPATA20 Antibody)
at dilution 1/1000
Secondary antibody: Goat anti rabbit IgG at
1/8000 dilution
Exposure time: 5 minutes



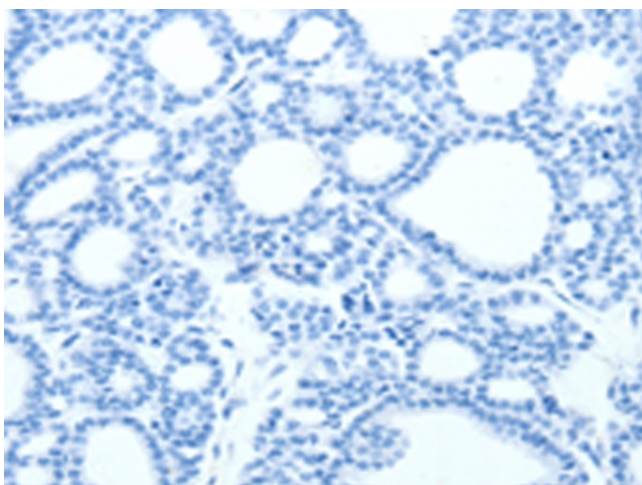
Immunohistochemistry of paraffin-embedded
Human esophagus cancer tissue using TA324241
(SPATA20 Antibody) at dilution 1/70 (Original
magnification: ×200)



Immunohistochemistry of paraffin-embedded Human esophagus cancer tissue using TA324241 (SPATA20 Antibody) at dilution 1/70, treated with synthetic peptide. (Original magnification: ×200)



Immunohistochemistry of paraffin-embedded Human thyroid cancer tissue using TA324241 (SPATA20 Antibody) at dilution 1/70 (Original magnification: ×200)



Immunohistochemistry of paraffin-embedded Human thyroid cancer tissue using TA324241 (SPATA20 Antibody) at dilution 1/70, treated with synthetic peptide. (Original magnification: ×200)