

Product datasheet for **TA324239**

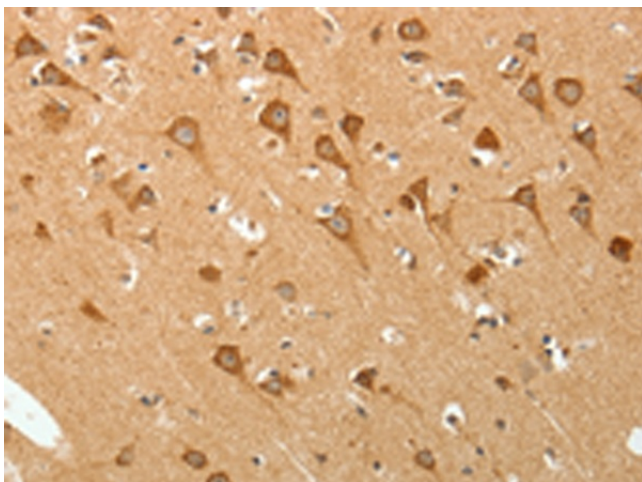
PGBD5 Rabbit Polyclonal Antibody

Product data:

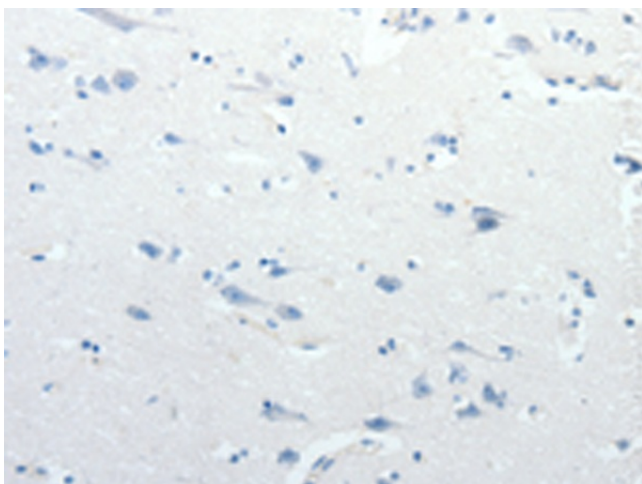
Product Type:	Primary Antibodies
Applications:	IHC
Recommended Dilution:	IHC: 25-100 Positive control: Human brain Predicted cell location: Membrane, Cytoplasm
Reactivity:	Human
Host:	Rabbit
Isotype:	IgG
Clonality:	Polyclonal
Immunogen:	Synthetic peptide corresponding to a region derived from 446-455 amino acids of human piggyBac transposable element derived 5
Formulation:	PBS pH7.3, 0.05% NaN ₃ , 50% glycerol
Concentration:	lot specific
Purification:	Antigen affinity purification
Conjugation:	Unconjugated
Storage:	Store at -20°C as received.
Stability:	Stable for 12 months from date of receipt.
Gene Name:	piggyBac transposable element derived 5
Database Link:	NP_078830 Entrez Gene 79605 Human Q8N414
Background:	The piggyBac family of proteins; found in diverse animals; are transposases related to the transposase of the canonical piggyBac transposon from the moth; <i>Trichoplusia ni</i> . This family also includes genes in several genomes; including human; that appear to have been derived from the piggyBac transposons. This gene belongs to the subfamily of piggyBac transposable element derived (PGBD) genes. The PGBD proteins appear to be novel; with no obvious relationship to other transposases; or other known protein families.
Synonyms:	DKFZp761A0620; FLJ11413

[View online »](#)

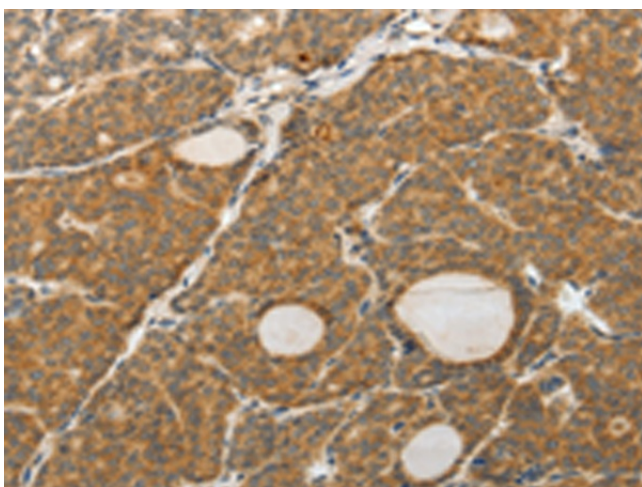
Product images:



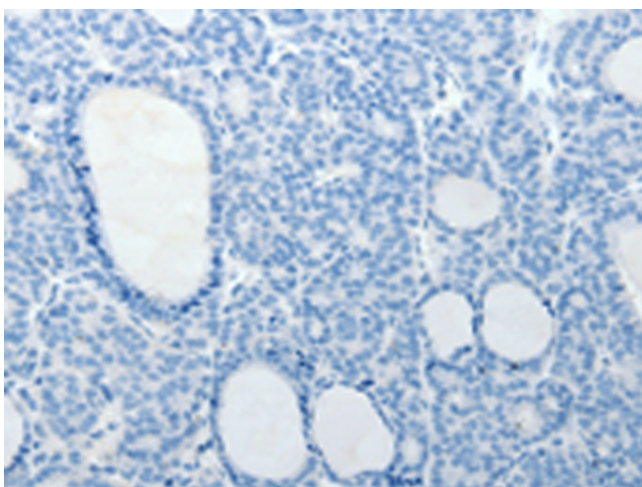
Immunohistochemistry of paraffin-embedded Human brain tissue using TA324239 (PGBD5 Antibody) at dilution 1/20 (Original magnification: ×200)



Immunohistochemistry of paraffin-embedded Human brain tissue using TA324239 (PGBD5 Antibody) at dilution 1/20, treated with synthetic peptide. (Original magnification: ×200)



Immunohistochemistry of paraffin-embedded Human thyroid cancer tissue using TA324239 (PGBD5 Antibody) at dilution 1/20 (Original magnification: $\times 200$)



Immunohistochemistry of paraffin-embedded Human thyroid cancer tissue using TA324239 (PGBD5 Antibody) at dilution 1/20, treated with synthetic peptide. (Original magnification: $\times 200$)