

Product datasheet for **TA324231**

Beta TRCP (BTRC) Rabbit Polyclonal Antibody

Product data:

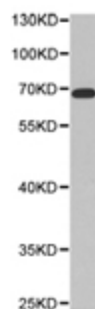
Product Type:	Primary Antibodies
Applications:	WB
Recommended Dilution:	WB: 1:500-2000
Reactivity:	Human, Mouse, Rat
Host:	Rabbit
Isotype:	IgG
Clonality:	Polyclonal
Immunogen:	Fusion protein corresponding to a region derived from 50-340 amino acids of human beta-transducin repeat containing E3 ubiquitin protein ligase
Formulation:	PBS pH7.3, 0.05% NaN ₃ , 50% glycerol
Concentration:	lot specific
Purification:	Antigen affinity purification
Conjugation:	Unconjugated
Storage:	Store at -20°C as received.
Stability:	Stable for 12 months from date of receipt.
Predicted Protein Size:	69 kDa
Gene Name:	beta-transducin repeat containing E3 ubiquitin protein ligase
Database Link:	NP_001243785 Entrez Gene 12234 MouseEntrez Gene 361765 RatEntrez Gene 8945 Human Q9Y297

Background: β -transducin repeat-containing protein (β -TrCP or FBW1A) is an F-box family protein characterized by the presence of the protein-protein mediating F-box domain first described in cyclin F. F-box proteins act as substrate adaptors that target proteins containing a specific phosphorylated sequence element, referred to as a phosphodegron, to the SCF E3 ubiquitin ligase complex for ubiquitination. β -TrCP targets many important proteins with diverse functions, such as p53, H-Ras, Smad4, I β Ba, β -catenin, and the cell cycle checkpoint protein claspin, for ubiquitin-mediated degradation. Research studies have shown that inhibition of β -TrCP expression has a demonstrated benefit in the treatment of prostate cancer.



[View online »](#)

Synonyms:	BETA-TRCP; betaTrCP; bTrCP; bTrCP1; FBW1A; FBXW1; FBXW1A; FWD1
Protein Families:	Druggable Genome
Protein Pathways:	Hedgehog signaling pathway, Oocyte meiosis, Ubiquitin mediated proteolysis, Wnt signaling pathway

Product images:

Predicted band size: 69 kDa. Positive control: Kidney tissue lysate. Recommended dilution: 1/500-2000. (Gel: 8%SDS-PAGE Lysate: 40 ug Primary antibody: 1/500 dilution Secondary antibody: Goat anti Rabbit IgG - H&L (HRP) at 1/10000 dilution Exposure time: 1 minute)