

## Product datasheet for **TA324228S**

### PTGES2 Rabbit Polyclonal Antibody

#### Product data:

Product Type:	Primary Antibodies
Applications:	IHC, WB
Recommended Dilution:	WB: 200-1000 WB positive control: MCF7 cell lysate IHC: 50-100 Positive control: Human cervical cancer Predicted cell location: Cytoplasm
Reactivity:	Human, Mouse
Host:	Rabbit
Isotype:	IgG
Clonality:	Polyclonal
Immunogen:	Fusion protein corresponding to a region derived from 90-377 amino acids of human prostaglandin E synthase 2
Formulation:	PBS pH7.3, 0.05% NaN <sub>3</sub> , 50% glycerol
Purification:	Antigen affinity purification
Conjugation:	Unconjugated
Storage:	Store at -20°C as received.
Stability:	Stable for 12 months from date of receipt.
Predicted Protein Size:	42 kDa
Gene Name:	prostaglandin E synthase 2
Database Link:	<a href="#">NP_001243264</a> <a href="#">Entrez Gene 96979 Mouse</a> <a href="#">Entrez Gene 80142 Human</a> <a href="#">Q9H7Z7</a>
Background:	Prostaglandin E synthase 2 is an enzyme that in humans is encoded by the PTGES2 gene. The protein encoded by this gene is a membrane-associated prostaglandin E synthase; which catalyzes the conversion of prostaglandin H <sub>2</sub> to prostaglandin E <sub>2</sub> . This protein also has been shown to activate the transcription regulated by a gamma-interferon-activated transcription element (GATE). Multiple transcript variants have been found for this gene.?

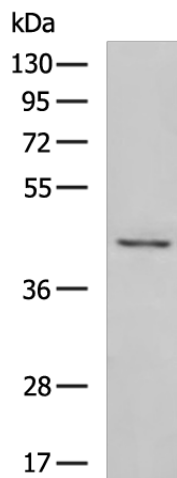


[View online »](#)

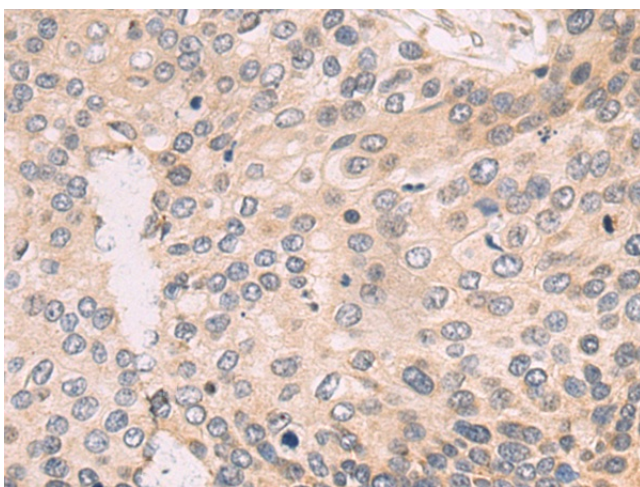
**Synonyms:** C9orf15; GBF-1; GBF1; mPGES-2; PGES2

**Protein Pathways:** Arachidonic acid metabolism, Metabolic pathways

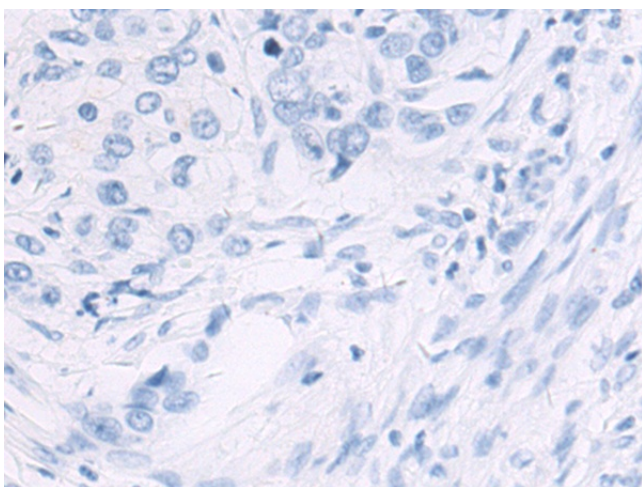
**Product images:**



Gel: 8%SDS-PAGE  
Lysate: 40  $\mu$ g  
Lane: MCF7 cell lysate  
Primary antibody: [TA324228] (PTGES2 Antibody) at dilution 1/400  
Secondary antibody: Goat anti rabbit IgG at 1/5000 dilution  
Exposure time: 90 seconds



Immunohistochemistry of paraffin-embedded Human cervical cancer tissue using [TA324228] (PTGES2 Antibody) at dilution 1/55 (Original magnification:  $\times$ 200)



Immunohistochemistry of paraffin-embedded Human cervical cancer tissue using [TA324228] (PTGES2 Antibody) at dilution 1/55, treated with fusion protein. (Original magnification: ×200)