

Product datasheet for **TA324227S**

PTGES2 Rabbit Polyclonal Antibody

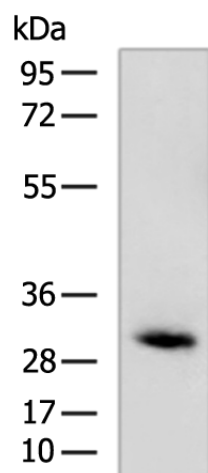
Product data:

| | |
|-------------------------|--|
| Product Type: | Primary Antibodies |
| Applications: | WB |
| Recommended Dilution: | WB: 500-2000 WB positive control: MCF7 cell lysate |
| Reactivity: | Human, Mouse |
| Host: | Rabbit |
| Isotype: | IgG |
| Clonality: | Polyclonal |
| Immunogen: | Fusion protein corresponding to a region derived from 90-377 amino acids of human prostaglandin E synthase 2 |
| Formulation: | PBS pH7.3, 0.05% NaN ₃ , 50% glycerol |
| Purification: | Antigen affinity purification |
| Conjugation: | Unconjugated |
| Storage: | Store at -20°C as received. |
| Stability: | Stable for 12 months from date of receipt. |
| Predicted Protein Size: | 42 kDa |
| Gene Name: | prostaglandin E synthase 2 |
| Database Link: | NP_001243264 Entrez Gene 96979 Mouse Entrez Gene 80142 Human Q9H7Z7 |
| Background: | Prostaglandin E synthase 2 is an enzyme that in humans is encoded by the PTGES2 gene. The protein encoded by this gene is a membrane-associated prostaglandin E synthase; which catalyzes the conversion of prostaglandin H ₂ to prostaglandin E ₂ . This protein also has been shown to activate the transcription regulated by a gamma-interferon-activated transcription element (GATE). Multiple transcript variants have been found for this gene.? |
| Synonyms: | C9orf15; GBF-1; GBF1; mPGES-2; PGES2 |
| Protein Pathways: | Arachidonic acid metabolism, Metabolic pathways |



[View online »](#)

Product images:



Gel: 8%SDS-PAGE
Lysate: 40 μ g
Lane: MCF7 cell lysate
Primary antibody: [TA324227] (PTGES2 Antibody) at dilution 1/1000
Secondary antibody: Goat anti rabbit IgG at 1/5000 dilution
Exposure time: 3 minutes